

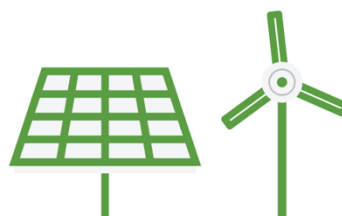


# GREBE

Generating Renewable Energy  
Business Enterprise



Northern Periphery and  
Arctic Programme  
2014-2020



## BUSINESS SUPPORTS CATALOGUE FOR

RENEWABLE ENERGY ENTERPRISES

AUGUST 2016



[www.grebeproject.eu](http://www.grebeproject.eu)

<b>The GREBE Project</b>	<b>6</b>
What is GREBE?	6
Why is GREBE happening?	6
What does GREBE do?	6
<b>The GREBE Business Supports Catalogue</b>	<b>6</b>
<b>Finland</b>	<b>8</b>
<b>Financial Support (grants, loans, equity investment)</b>	<b>10</b>
Feed-in tariff	10
Energy support	11
The Rural Development Programme for Mainland Finland	11
EIP – European Innovation Partnership (Rural Innovations)	12
Horizon 2020 for SMEs	13
A Startup Grant	13
Young Innovative Companies (YIC) Funding	14
Finnvera Loans	15
Start Guarantee	17
Finnvera Guarantee	17
Internationalisation Guarantee	18
Export Guarantee	18
Environmental Guarantee	19
<b>Taxation or welfare supports or concessions for businesses</b>	<b>20</b>
<b>Soft supports e.g. mentoring, training, specialist advice, networks</b>	<b>20</b>
Enterprise Finland	20
Business Mentors	21
Product Track	21
Yrityspörssi (portal to sell/buy business enterprises)	22
Business Transfer Support	22
Franchising support	23
Training for entrepreneurs	23
Qualification for an Entrepreneur	24
Business advisory and development services	24
RE and Business Training and Expert Services	25
Entrepreneurship and Innovation Services of University of Eastern Finland	25
Business Incubator	26
Joensuu Science Park Business Development Services	27
<b>Research and Development Supports</b>	<b>27</b>
<b>Workplace Innovations</b>	<b>27</b>
Development and Piloting	28
Companies' Research Projects	29
Planning for Global Growth	29
VTT services	31
LUKE services	31
<b>Social and Community supports (focused on not for profit)</b>	<b>32</b>
Support for recruitment/Pay subsidy	32
<b>Other</b>	<b>32</b>
Start Me Up – Business Idea Competition	32
Draft Programme	32
<b>Iceland</b>	<b>34</b>
<b>Financial Support (grants, loans, equity investment)</b>	<b>36</b>
Energy Fund	36
Geothermal prospecting	36
Rannsóknarstyrkir Orkusjóðs (National energy authority research grants)	37

Grants for district heating	37
Frumkvöðlasjóður Íslandsbanka	38
Átak til atvinnusköpunar	38
Tækniþróunarsjóður (Technology Development fund)	39
Icelandic student Innovation fund	40
Uppbyggingarsjóður (structural fund for each region in Iceland)	40
<b>Taxation or welfare supports or concessions for businesses</b>	<b>41</b>
Skattafrádráttur rannsókna- og þróunarverkefna	41
<b>Soft supports</b>	<b>42</b>
Start up energy	42
Konur í orkumálum – Women Network in Energy	42
Samband sveitarfélaga á köldum svæðum –	43
Iceland geothermal	43
<b>Research and Development supports</b>	<b>44</b>
Icelandic Research Fund	44
<b>Other</b>	<b>44</b>
Incubation spaces	44
<b>Ireland</b>	<b>46</b>
<b>Financial Support (grants, loans, equity investment)</b>	<b>48</b>
Micro Enterprise Loan Fund	48
Credit Guarantee Scheme	48
Strategic Banking Corporation of Ireland (SBCI) - Investment and Working Capital Loans	49
Strategic Banking Corporation of Ireland (SBCI) - Refinance of Exiting Banks	50
Strategic Banking Corporation of Ireland (SBCI) - Leasing and Hire Purchase	50
Seed & Venture Capital Programme	52
Competitive Start Fund	52
Priming grants	53
Business Expansion Grant	54
Feasibility/Innovation Grant	54
Microfinance LEO Loans	55
REFIT Schemes and Supports	55
REFIT 1	56
REFIT 2	56
REFIT 3	56
New Renewable Electricity Support Schemes	57
Competitive Feasibility Fund	57
Western Investment Fund for SMEs	57
Business Angel Finance	58
Innovative HPSU Fund (Equity)	58
<b>Taxation or welfare supports or concessions for businesses</b>	<b>59</b>
Startup Relief for Entrepreneurs (SURE)	59
Employment and Investment Scheme	59
Tax Relief for new start-up companies	60
Research & Development Tax Credits	60
VAT measures to reduce burden on SMEs	61
The Back to Work Enterprise Allowance (BTWEA) scheme	61
JobBridge, the National Internship Scheme	62
JobsPlus	62
<b>Soft supports e.g. mentoring, training, specialist advice, networks</b>	<b>63</b>

Accelerate Management Development Programme	63
Access to EU Programmes, EU Finance and EU Markets	63
Horizon 2020 Supports	64
New Frontiers Entrepreneur Development Programme	64
Training Networks Programme (TNP)	65
Management Works Programme	65
Trade Accelerator Vouchers	66
Start Your Own Business Programme	66
Accelerate Management Development Programme	67
Tendering Supports	67
HPSU Feasibility Study Grant	68
SEAI Energy Advice and Mentoring	68
SME Support Tool	69
<b>Research and Development supports</b>	<b>69</b>
Ocean Energy Prototype Development Fund	69
Innovation Voucher for start-up companies	70
Innovation Partnership Grant Programme	71
<b>Employment Supports</b>	<b>71</b>
EURES	71
The EmployAbility Service	72
The Wage Subsidy Scheme	72
Work Place Supports	73
<b>Other- e.g. Incubation space or office space</b>	<b>73</b>
Enterprise Space / Incubation space	73
<b>Northern Ireland</b>	<b>75</b>
<b>Financial Support (grants, loans, equity investment)</b>	<b>77</b>
Invest NI	77
Intertrade Ireland	78
Renewable Heat Incentive	79
Renewables Obligation (ROCs)	80
<b>Soft supports e.g. mentoring, training, specialist advice, networks</b>	<b>80</b>
Northern Ireland Renewables Industry Group	80
Carbon Trust	81
CAFRE – College of Agriculture, Food & Rural Development	82
Invest NI Innovation Vouchers	83
<b>Research and Development Supports</b>	<b>83</b>
Tech Start Up	84
<b>Social and Community supports (focused on not for profit)</b>	<b>84</b>
Action Renewables	84
<b>Norway</b>	<b>86</b>
<b>Financial Supports</b>	<b>88</b>
Start UP Grants	88
Business Loans	89
Narvik Capital	89
Forte Narvik	90
Norinnova Invest	90
Equity Investment	91
Venture Capital Investment	91
<b>Taxation for businesses</b>	<b>92</b>
Green Certificates	92

<b>Welfare supports for businesses</b>	<b>92</b>
Enova-Projects	92
National Investment Support	93
<b>Concessions for businesses</b>	<b>93</b>
Concessions for Hydro Power Plants	93
Concessions for Small Hydro Power Plants	94
<b>Soft supports</b>	<b>95</b>
Innovation Norway – Mentoring Programme	95
Norwegian Solar Energy Society	95
<b>Research and Development supports</b>	<b>96</b>
UIT – Arctic University, Technology Department	96
NORUT NARVIK	96
<b>Social and Community supports (focused on not for profit t in RE area)</b>	<b>97</b>
Other	97
SIVA INCUBATOR	97
<b>Scotland</b>	<b>98</b>
<b>Financial Supports</b>	<b>100</b>
UK Green Investment Bank plc (GIB)	100
Renewable Energy Investment Fund (REIF)	100
Scottish Innovative Foundation Technologies fund	101
InnovFin Energy Demo Projects	102
Barclays Renewable Energy Fund	102
EIB - European Fund for Strategic Investments (EFSI)	103
District Heating Loan Fund	103
<b>Taxation or welfare supports or concessions for businesses</b>	<b>104</b>
Enterprise Investment Scheme	104
Seed Enterprise Investment Scheme	105
<b>Soft supports e.g. mentoring, training, specialist advice, networks</b>	<b>105</b>
Low Carbon Skills Fund	105
Scottish Enterprise 2015 – 2018 Business Plan	106
Marine Energy Parks	107
Scotland's International Technology and Renewable Energy Zone (ITREZ)	107
<b>Research and Development supports</b>	<b>108</b>
European Marine Energy Centre (EMEC)	108
SMART: Scotland	108
<b>Social and Community supports</b>	<b>109</b>
Community And Renewable Energy Scheme (CARES)	109
Community Energy Scotland	110
Local Energy Challenge Fund	110
Local Energy Scotland	111
<b>Other Types of Support</b>	<b>111</b>
Contracts for Difference	111
Feed-in tariff	113
Renewable Heat Incentive (RHI)	113

## The GREBE Project

### What is GREBE?

GREBE (Generating Renewable Energy Business Enterprise) is a €1.77m, 3-year (2015-2018) transnational project to support the renewable energy sector. It is co-funded by the EU's Northern Periphery & Arctic (NPA) Programme. It focuses on the challenges of peripheral and arctic regions as places for doing business, and helps develop renewable energy business opportunities in areas with extreme conditions.

The project partnership includes the eight partners from six countries, Western Development Commission (Ireland), Action Renewables (Northern Ireland), Fermanagh & Omagh District Council (Northern Ireland), Environmental Research Institute (Scotland), LUKE (Finland), Karelia University of Applied Sciences (Finland), Narvik Science Park (Norway) and Innovation Iceland (Iceland).

### Why is GREBE happening?

Renewable Energy entrepreneurs working in the NPA area face challenges including a lack of critical mass, dispersed settlements, poor accessibility, vulnerability to climate change effects and limited networking opportunities.

GREBE will equip SMEs and start-ups with the skills and confidence to overcome these challenges and use place based natural assets for RE to best sustainable effect. The renewable energy sector contributes to sustainable regional and rural development and has potential for growth.

### What does GREBE do?

GREBE supports renewable energy start-ups and SMEs:

- To grow their business, to provide local jobs, and meet energy demands of local communities.
- By supporting diversification of the technological capacity of SMEs and start-ups so that they can exploit the natural conditions of their locations.
- By providing RE tailored, expert guidance and mentoring to give SMEs and start-ups the knowledge and expertise to grow and expand their businesses.
- By providing a platform for transnational sharing of knowledge to demonstrate the full potential of the RE sector by showcasing innovations on RE technology and strengthening accessibility to expertise and business support available locally and in other NPA regions.
- To connect with other renewable energy businesses to develop new opportunities locally, regionally and transnationally through the Virtual Energy Ideas Hub.
- By conducting research on the processes operating in the sector to improve understanding of the sector's needs and make the case for public policy to support the sector.

For more information, visit our website:

<http://grebeproject.eu/>

Follow our Blog:

<https://greberenewableenergyblog.wordpress.com/>

Like us on Facebook:

<https://www.facebook.com/GREBEProject/>

Follow us on Twitter:

[https://twitter.com/GREBE\\_NPA](https://twitter.com/GREBE_NPA)

## The GREBE Business Supports Catalogue

This GREBE Business Supports Catalogue has been developed following a review of Renewable Energy business support funding mechanisms and funding options available to support the development of renewable businesses in the NPA region.

It provides information on the funding mechanisms currently available in the partner regions (Finland, Iceland, Ireland, Northern Ireland, Norway and Scotland). The information will be useful to both funding agencies (e.g. business support agencies and municipalities) and to SMEs giving details of funding options available in their regions.

The main focus is on public body support for renewable businesses but both private sector and social investment options have been included where appropriate. The supports included are for SMEs and Micro businesses but also include options for those SMEs expected to grow rapidly (e.g. High Potential Start Ups).

The business support funding mechanisms considered vary from standard 'hard' business support options (e.g. loans and venture capital) to softer supports (e.g. innovation schemes, business partner search supports etc.)

The catalogue is organised by GREBE partner region in the following order:

- Finland,
- Iceland,
- Ireland,
- Northern Ireland,
- Norway,
- Scotland

A short introduction on the methods and types of supports in each partner region is provided. Information for each partner region is then organised under the following categories:

- Financial Support (grants, loans, equity investment)
- Taxation or welfare supports or concessions for businesses
- Soft supports e.g. mentoring, training, specialist advice, networks
- Research and Development Supports
- Social and Community supports (focused on not for profit)
- Other- e.g. Incubation space or office space etc.

Within each of these categories there is considerable variation in the ways different funding options are implemented and these differences will impact on the success of schemes. We hope that by using this catalogue those who seeking funding and support for renewable businesses will have a clear portfolio of options which are available to them.

In the future the information in this catalogue will be used to create a web based tool allowing users to search for available funding options and to consider different types of funding available in each region. This will be available at the GREBE project website <http://grebeproject.eu/> in August 2016. This catalogue is one of the deliverables of the GREBE Project.

### Deliverable: 3.2.1

A PDF catalogue of funding options available to renewable businesses in partner regions (this will be made available on the GREBE website)



# GREBE

Generating Renewable Energy  
Business Enterprise

[www.grebeproject.eu](http://www.grebeproject.eu)

## Finland



Northern Periphery and  
Arctic Programme  
2014–2020







## Finland

### What kind of agencies offer support to SMEs?

In Finland, the business supports of renewable energy are largely governed by the state, regional authorities, and public sectoral agencies. Local business development companies, owned by the municipalities, link SMEs to the public support programmes. Universities and research organisations provide research and development services and number of associations operate in specific themes and offer soft supports.

### Is it clear to the SME where they should go for support?

The first contact for SMEs is usually local development company operating in a district (sub region) level. They provide support in business planning and development, and link companies to the regional authorities and sectoral agencies and funding sources/programmes. Many companies are also members of the business associations that can advise them in finding the most relevant supports.

### Is there one agency which is the first place for businesses to go?

Enterprise Finland, governed by the Ministry of Employment and the Economy, has established a business support portal (<http://www.yrityssuomi.fi/en>). It provides necessary background information on business establishment, funding sources, business routines (taxation, permits, audits, employer obligations etc.) and contacts to the supporting agencies.

### Are business supports restricted to certain types of business, or enhanced for certain types of SMEs (e.g. only available for manufacturing or for exporters)?

Business supports are mostly generic, not focused on certain types of businesses. Financial supports focus much on the business establishment phase and reaching the business growth through internationalisation or product/service development.

### Are there special supports for RE businesses?

RE businesses have tailored financial supports: energy support (Centres for Economic Development, Transport and the Environment), and feed-in-tariff (Energy Authority). In addition, RDI (Research, Development and Innovation) activities are supported through the EU funding programmes. Soft supports (advisories, training, development programmes, mentoring) have often thematic contents but are available for all sectors.

Business supports available in Finland are described in more detail in the coming pages under the following themes:

- Financial Support (grants, loans, equity investment)
- Taxation or welfare supports or concessions for businesses
- Soft supports e.g. mentoring, training, specialist advice, networks
- Research and Development supports
- Social and Community supports (focused on not for profit)
- Other- e.g. Incubation space or office space

## Financial Support (grants, loans, equity investment)

### Feed-in tariff

#### Link to support information on website

<http://www.energiavirasto.fi/en/web/energy-authority/feed-in-tariff>

#### Type of Finance Support

A production subsidy

#### Description of the support

The feed-in tariff is a financial support and steering mechanism established to increase the RE production. The feed-in tariff is available for wind, biogas and wood fuel power plants. The tariff comprises the target price 83.50 €/MWh less the three-month mean market price of electricity. The feed-in tariff payable to timber chip power plants is determined according to the three-month mean price of emission rights and the energy tax on peat.

The tariff is based on the legislation provided here:

<http://www.energiavirasto.fi/en/web/energy-authority/legislation1>

#### Agency Responsible for Support

Energy Authority

<https://www.energiavirasto.fi/en/web/energy-authority/>

#### Maximum and minimum funding available

Tariff depends on the target price and average three-month market price of electricity. The system is temporary, until the combined capacity of the generators is exceeded. (wind 2500 MVA, biogas 19 MVA, wood fuels 150 MVA or 50 generators).

#### Is this Specific to Renewable Energy businesses?

For RE producers (wind power, biogas, wood fuel power plants)

#### Is this a local, regional or national support?

National

#### Other useful/relevant information

<http://www.energiavirasto.fi/documents/10179/0/Feed-in+tariff+summary+1.1.2015.pdf/2de0797f-40ca-4dcd-854a-5b0ea88f1d2e>

SATU system (in Finnish) lists all plants receiving this support.

---

## Energy support

### Link to support information on website

[https://www.tem.fi/en/energy/energy\\_support](https://www.tem.fi/en/energy/energy_support)

[http://www.tem.fi/energia/energiatuki/tuen\\_maara](http://www.tem.fi/energia/energiatuki/tuen_maara)

### Type of Finance Support

A state grant for investments and related research projects

### Description of the support

The energy support is a state grant for investments in RE production facilities and research projects related to it. Grants are available for projects, which promote the use or production of renewable energies, advance energy efficiency and reduce the environmental effects caused by energy production and use. Regulation No. 1063/2012). At least 25% of the projects' financing must come from non-governmental funds. Energy aid may be granted to companies, municipalities and other communities.

### Agency Responsible for Support

The Ministry of the Employment and the Economy. Funding is allocated via local Centres for Economic Development, Transport and the Environment.

[https://www.tem.fi/en/energy/energy\\_support](https://www.tem.fi/en/energy/energy_support)

### Maximum and minimum funding available

Funding rates differ: Energy audits up to 50%; new technology (RE production, use and energy efficiency) investments up to 40%; conventional technologies up to 30%; reducing the environmental impacts of energy production and use up to 30%.

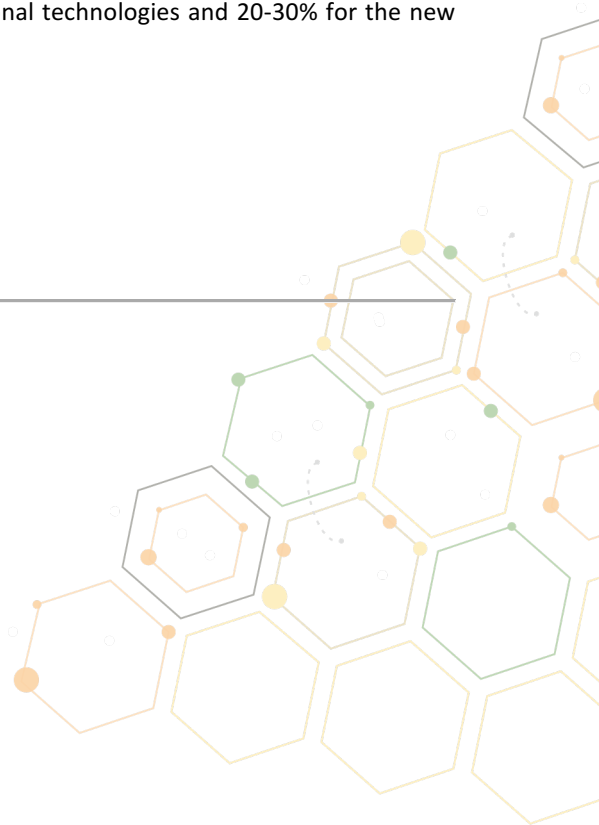
However, the typical support rates have been 10-20% for conventional technologies and 20-30% for the new technologies.

### Is this Specific to Renewable Energy businesses?

RE businesses but also for municipalities and communities.

### Is this a local, regional or national support?

National



## The Rural Development Programme for Mainland Finland

### Link to support information on website

<https://www.maaseutu.fi/en/rural-development-programme/objectives-of-the-program/Pages/default.aspx#sthash.o5SmDKQD.dpuf>

### Type of Support

Development funding programme

### Description of the support

Structural funds for both public and private sectors

The three focus areas are the following:

1. Promote bioeconomy and, as part of it, agriculture that is economically, socially and ecologically sustainable and ethically acceptable.
2. Diversify rural industries and create employment by improving the competitiveness of businesses, supporting new entrepreneurship and promoting the networking of companies.
3. Improve vitality and quality of life in rural areas by strengthening independent local activities

### Agency Responsible for Support

The strategy is coordinated by the rural development unit of the Ministry of Agriculture and Forestry. Funding is allocated via local Centres for Economic Development, Transport and the Environment.

<https://www.ely-keskus.fi/en/web/ely-en/>

### Maximum and minimum funding available or maximum value of funding if in kind (or alternative measure)

Depends on the project type

### Is this Specific to Renewable Energy businesses?

Not only, but provides good opportunities for diversifying/supporting rural businesses with RE solutions

### Is this a local, regional or national support?

National programme with regional allocation

---

## EIP – European Innovation Partnership (Rural Innovations)

### Link to support information on website

[https://www.maaseutu.fi/en/Rural\\_Innovations/Pages/default.aspx](https://www.maaseutu.fi/en/Rural_Innovations/Pages/default.aspx)

### Type of Support

Structural funding for innovation groups (part of EIP-Agri)

### Description of the support

The measure aims to create an optimal setting for developing innovations that promote agriculture and forestry by making the best possible knowledge and expertise available for the group developing the innovation, ensuring that an idea, once suggested, can be turned into a deployable innovation. The business potential of the innovation to be developed is an important element of the selection criteria. While the project may also be associated with investments in agriculture or food production, these will be realised as separate projects, and their potential eligibility for support will be determined on the grounds of the relevant support scheme's principles. The support level may be increased by 20% at maximum if the project has no links to the operation of a rural innovation group. The project may also involve international co-operation.

The beneficiary is the responsible implementer of the project, which may be an organisation under public or private law, including an SME, a research unit or a development organisation, a foundation, an educational institution, a municipality or an association that assumes responsibility for project implementation. The group must contain at least one entrepreneur of primary production.

**Agency Responsible for Support**

Centre for Economic Development, Transport and the Environment.

<https://www.ely-keskus.fi/en/web/ely-en/>

**Maximum and minimum funding available or maximum value of funding if in kind (or alternative measure)**

Additional support; The support level may be increased by 20% at maximum if the project has no links to the operation of a rural innovation group.

**Is this Specific to Renewable Energy businesses?**

No, but has good relevance for RE

**Is this a local, regional or national support?**

EIP-Agri is EU –level instrument, this is Finnish implementation of EIP-Agri.

---

**Horizon 2020 for SMEs****Link to support information on website**

<http://www.tekes.eu/en/horizon-2020/>

**Type of Support**

Research and development funding

**Description of the support**

EU –level funding programme for research and development, SME funding instruments

**Agency Responsible for Support**

In Finland, support for SME involvement in Horizon 2020 is coordinated by the TEKES (The Finnish Funding Agency for Innovation); <http://www.tekes.eu/en/horizon-2020/>

**Maximum and minimum funding available or maximum value of funding if in kind (or alternative measure)**

Depends on the call/application, but e.g. there has been opportunities to apply 75% support between €50,000 and €2,500,000 €.

**Is this Specific to Renewable Energy businesses?**

No

**Is this a local, regional or national support?**

International/national

---

## A Startup Grant

### Link to support information on website

[http://www.teservices.fi/te/en/employers/for\\_entrepreneurs/services\\_new\\_entrepreneurs/startup\\_grant/index.html](http://www.teservices.fi/te/en/employers/for_entrepreneurs/services_new_entrepreneurs/startup_grant/index.html)

### Type of Finance Support

Grant for new entrepreneurs

### Description of the support

The purpose of startup grants is to encourage new businesses and promote employment. The grant provides an entrepreneur with a secure income during the time that getting the business up and running is estimated to take – however for no more than 18 months.

### Agency Responsible for Support

TE-Services (public employment and business services)

<http://www.te-services.fi/te/en/index.html>

### Maximum and minimum funding available

The startup grant consists of

- a basic grant, which amounted to €32.80 a day in 2015
- a supplementary grant, the amount of which is decided case by case at the discretion of the TE Office.
- The supplementary amount may not exceed 60 per cent of the basic grant amount.

### Is this Specific to Renewable Energy businesses?

No

### Is this a local, regional or national support?

National, allocated via regional and local offices

---

## Young Innovative Companies (YIC) Funding

### Link to support information on website

<http://www.tekes.fi/en/funding/yic/funding/>

### Type of Finance Support

Grant/Loan

### Description of the support

Tekes offers funding for young, innovative companies for comprehensive development of their business activities. Company may be eligible for the funding if

- it has opportunity for fast growth in international markets,
- evidence of promising business activities and customer references,
- a clear plan to grow in international markets, and the capacity to implement the plan,
- a competitive edge with which it is possible to attain an important market position,
- a committed and competent management team,
- the ability attract venture capital

### Agency Responsible for Support

TEKES ([www.tekes.fi/en/funding](http://www.tekes.fi/en/funding))

### Maximum and minimum funding available

The maximum amount of Tekes funding for young, innovative companies amounts to €1.25 million, of which a maximum of €500,000 may be funded as a grant, and €700,000 as a loan.

Tekes funds 75 percent of the eligible project costs in at least three phases. The funding for the first phase is a €250,000 grant; typically for the period of 6-12 months. The funding is granted for business development.

Tekes sets goals for the company in its funding decision, which, if realised, enable the company to move on to the next phase of funding.

### Is this Specific to Renewable Energy businesses?

No

### Is this a local, regional or national support?

National

---

## Finnvera Loans

### Link to support information on website

[https://www.finnvera.fi/eng/node\\_2686/Loans](https://www.finnvera.fi/eng/node_2686/Loans)

### Type of Finance Support

Loans (portfolio)

### Description of the support

Finnvera has a portfolio of loans, which have been developed to cover the financing needs in all stages of an enterprise. Loans include:

#### Entrepreneur Loan:

An Entrepreneur Loan is a personal loan to an entrepreneur and it can be used to finance investments in the share capital of a limited company and/or in the fund of invested unrestricted shareholder's equity. An Entrepreneur Loan can also be used to finance purchases of shares of an existing limited company.

The target enterprise may operate in any sector except farming, forestry or building developer's business. The enterprise must meet the criteria set by the EU for SMEs and it must have the prerequisites for profitable business.

An Entrepreneur Loan can be granted to a shareholder of a limited company whose holding of the share capital and votes will be at least 20 per cent after completion of the investment or the transaction financed by means of the loan.

The loan can also be granted to several founders or shareholders in the same enterprise. The maximum loan per borrower is 100,000 euros. The borrower must personally put up a self-financing portion of at least 20 per cent.

#### Finnvera Loan:

A Finnvera Loan (previously named Investment and Working Capital Loan) is intended **for newly established and existing small and medium-sized enterprises**. It can be used to finance domestic construction, machinery and equipment investments, energy and environment projects, working capital needs, and various ownership arrangements.

### Internationalization Loan:

The Internationalization Loan is intended for financing the business operations of a Finnish SME abroad. The loan may be used when a subsidiary or an affiliated company abroad needs funding for investment, development or growth. The loan can also be used to acquire or increase a holding, or to raise the share capital, in a subsidiary or in an affiliated company abroad. After the investment, the borrower must usually hold at least 1/5 of the voting rights in the company.

To be eligible for financing, the subsidiary or affiliated company abroad must primarily engage in production, assembly, maintenance or service. Financing cannot be granted merely for the establishment or expansion of a foreign sales office or for exports.

Enterprises with fewer than 250 employees that have an annual turnover not exceeding 50 million euros or an annual balance-sheet total not exceeding 43 million euros can apply for an Internationalization Loan.

Bridge financing for the period preceding the payment of grants

Bridge financing means a loan granted by Finnvera to meet a company's need for working capital during the period between a positive grant decision made by a Centre for Economic Development, Transport and the Environment (ELY Centre) or Tekes (the Finnish Funding Agency for Innovation) and the actual payment of the grant. ELY Centre's grant applicants may apply for bridge financing only if the grant they are applying for is a development grant.

A prerequisite for a loan by Finnvera is that Tekes or an ELY Centre has made a positive grant decision. Therefore, the Bridge Financing decision will always be made after the grant decision. The maximum loan sum is 70% of the grant; however, not more than EUR 500,000 for grants issued by Tekes.

### Bond Financing

Finnvera may mark bonds issued by companies that meet the EU definition of an SME or larger companies. Bond financing by Finnvera is well suited for companies' general financing needs, such as investments, expansion and development of operations and the organisation of the financing structure.

A bond is a financing instrument in which a group of lenders or investors marks a bond issued by a company in need of a loan. The issuing of a bond is organised by banks or other parties, which charge the costs of the issuing arrangements from the issuing company. Because of their typical features and structure, bonds are best-suited for the largest financing needs.

Finnvera may mark bonds from the issue date. Finnvera may not purchase bonds on the secondary market or make investments in funds investing in bonds. Finnvera may not account for more than 50 per cent of the actual markings. No self-financing is required of the companies issuing bonds.

The markings of bonds are at market price. As part of the project assessment, Finnvera also conducts a normal enterprise analysis, which forms the basis for its participation in the project.

### Agency Responsible for Support

Finnvera <https://www.finnvera.fi>

### Maximum and minimum funding available

Presented in descriptions above.

### Is this Specific to Renewable Energy businesses?

Finnvera can provide financing for enterprises in almost every sector; only farming, forestry and building developer's business remain outside our range of financing.



**Is this a local, regional or national support?**

National

---

**Start Guarantee****Link to support information on website**

[https://www.finnvera.fi/eng/node\\_2686/Guarantees/Start-Guarantee](https://www.finnvera.fi/eng/node_2686/Guarantees/Start-Guarantee)

**Type of Finance Support**

Guarantee for new enterprises

**Description of the support**

Start Guarantee is intended for newly launched enterprises owned by private individuals and meet the SME definition applied by the EU. Another criterion is that no more than three years has passed since their entry into the Trade Register.

**Agency Responsible for Support**

Finnvera <https://www.finnvera.fi>

**Maximum and minimum funding available**

Finnvera's guarantee coverage can be at most 80 %. However, the total sum of Start Guarantees granted to one enterprise may not exceed EUR 80,000.

**Is this Specific to Renewable Energy businesses?**

Finnvera grants guarantees to all business sectors apart from the actual farming industry, forestry and building developer's business.

**Is this a local, regional or national support?**

National

---

**Finnvera Guarantee****Link to support information on website**

[https://www.finnvera.fi/eng/node\\_2686/Guarantees/Finnvera-Guarantee](https://www.finnvera.fi/eng/node_2686/Guarantees/Finnvera-Guarantee)

**Type of Finance Support**

Finnvera Guarantee is for SMEs as security for domestic financing in such areas as investments and/or working capital and business and company acquisitions.

**Description of the support**

Finnvera Guarantee can be used as security for loans and bank guarantees provided by banks, financing companies or insurance companies in such instruments as promissory notes, accounts with overdraft facility, credit limits, bank guarantees (delivery security and other contingent liabilities), bank guarantee limits (delivery security) and factoring financing. The financing risk is shared by Finnvera and the provider of financing. Finnvera Guarantee is usually 50 per cent of the credit or other financing commitment.

**Agency Responsible for Support**

Finnvera <https://www.finnvera.fi>

**Maximum and minimum funding available**

Usually 50 per cent of a credit or some other financial commitment.

**Is this Specific to Renewable Energy businesses?**

Finnvera grants guarantees to all business sectors apart from the actual farming industry, forestry and building developer's business.

**Is this a local, regional or national support?**

National

---

**Internationalisation Guarantee****Link to support information on website**

[https://www.finnvera.fi/eng/node\\_2686/Guarantees/Internationalisation-Guarantee](https://www.finnvera.fi/eng/node_2686/Guarantees/Internationalisation-Guarantee)

**Type of Finance Support**

The internationalisation guarantee serves as collateral for financing the business operations of a Finnish SME abroad.

**Description of the support**

The guarantee may be used when a subsidiary or an affiliated company abroad needs funding for investment, development or growth. The guarantee can also be used to acquire or increase a holding, or to raise the share capital, in a subsidiary or in an affiliated company abroad. After the investment, the recipient of the financing must usually hold at least 1/5 of the voting rights in the company.

To be eligible for financing, the subsidiary or affiliated company abroad must primarily engage in production, assembly, maintenance or service. Financing cannot be guaranteed merely to finance exports, in other words, it cannot be used simply to set up a sales office.

Enterprises with fewer than 250 employees that have an annual turnover not exceeding €50 million or an annual balance-sheet total not exceeding €43 million can apply for an internationalisation guarantee.

**Agency Responsible for Support**

Finnvera <https://www.finnvera.fi>

**Maximum and minimum funding available**

Finnvera's share of the total funding in an internationalisation project is negotiated separately in each case.

**Is this Specific to Renewable Energy businesses?**

No

**Is this a local, regional or national support?**

National

---

**Export Guarantee****Link to support information on website**

[https://www.finnvera.fi/eng/node\\_2686/Guarantees/Export-Guarantee](https://www.finnvera.fi/eng/node_2686/Guarantees/Export-Guarantee)

**Type of Finance Support**

Export Guarantees is an instrument for covering domestic needs for collateral in exports.

**Description of the support**

By means of an Export Guarantee, an exporter can acquire pre-delivery or post-delivery financing for working capital from a bank. An Export Guarantee can also serve as countersecurity for a bank when a bond is given in favour of a foreign buyer (a bid bond, an advance payment bond, a performance bond or a warranty period bond).

Export Guarantees can be issued for the following purposes:

- provision of financing for pre-delivery working capital needs in export projects, such as financing for manufacturing costs and raw material purchases
- provision of financing for post-delivery working capital needs (financing to cover the buyer's payment period)
- bonds pertaining to delivery contracts (bid bonds, advance payment bonds, bonds for manufacture, delivery and warranty periods)
- export of services, installation, planning, etc.(construction companies, engineering offices)

No limits are applied to the size of eligible projects. Export Guarantees can also be issued to companies other than SMEs. In general, financing is not available for exports to subsidiaries or associated companies. However, if the exporter is a domestic parent company and the end client is a buyer outside the Group, exports may also take place via a subsidiary or an associated company.

No restrictions are placed on the business sector in export projects.

Loans and guarantees granted by Finnvera are considered to include State aid if the price an enterprise pays for the financing is lower than the reference price determined by the EU Commission. Owing to international agreements, however, export guarantees must always be priced so that they do not include aid.

### Agency Responsible for Support

Finnvera <https://www.finnvera.fi>

### Maximum and minimum funding available

Finnvera's guarantee covers a maximum of 80% of a loan or other financial commitment.

### Is this Specific to Renewable Energy businesses?

No

### Is this a local, regional or national support?

National

---

## Environmental Guarantee

### Link to support information on website

[https://www.finnvera.fi/eng/node\\_2686/Guarantees/Environmental-Guarantee](https://www.finnvera.fi/eng/node_2686/Guarantees/Environmental-Guarantee)

### Type of Finance Support

Environmental Guarantees can be granted as security for credits that are used for environmental protection investments, renewable energy projects or projects improving energy efficiency.

### Description of the support

Environmental Guarantee is mainly targeted for large companies throughout Finland.

Suitable uses for the guarantee are, for instance, investments improving water or air protection or the recycling of wastes, as well as renewable energy projects undertaken by companies that need financing for investments in wind power parks, biofuel facilities, thermal power plants utilising forest energy, or other similar applications. The Guarantee can however not be granted for financing that is used to manufacture the devices in aforementioned projects. For these purposes Finnvera can offer other financing products.

The guarantee can also be used for projects intended to improve energy efficiency and for the modifications, repairs or improvements required by the above-mentioned projects.

The guarantee may also be granted for an investment that is carried out abroad but involves substantial improvements to the state of the Finnish environment.

**Agency Responsible for Support**

Finnvera <https://www.finnvera.fi>

**Maximum and minimum funding available**

Finnvera's guarantee can cover at most 80 per cent of the credit sum.

**Is this Specific to Renewable Energy businesses?**

Yes, but targeted mainly for large companies

**Is this a local, regional or national support?**

National

**Other useful/relevant information**

---

**Taxation or welfare supports or concessions for businesses**

Finland has tax concessions for industry and professional horticulture, as well as tax refund for energy intensive industry. However, these are not directly related to RE or SMEs.

In taxation, excise duties are much based on the carbon content of fuels. However, those are not specific supports for SMEs.

---

**Soft supports e.g. mentoring, training, specialist advice, networks****Enterprise Finland****Link to support information on website**

<https://www.yrityssuomi.fi/en/>

**Type of Support**

Information and service portal

**Description of the support**

Free of charge portal that includes information, tools and services for start-ups and existing companies for starting, growing and developing a company and advice and guidance on internationalisation.

Portal description: <https://www.yrityssuomi.fi/en/tietoa-palvelusta>

**Agency Responsible for Support**

Ministry of Employment and the Economy

**Is this Specific to Renewable Energy businesses?**

No, it is available for all sectors

**Is this a local, regional or national support?**

National, includes also regional information

Local offices provide a portfolio of services (establishing an enterprise, business planning and development).

The services are available locally via North Karelia Enterprise Agency (<http://pohjois->

[karjala.uusyrityskeskus.fi/english](http://karjala.uusyrityskeskus.fi/english)) and North Karelia Chamber of Commerce (<http://www.nk.chamber.fi/en/frontpage/>)

---

## Business Mentors

### Link to support information on website

<http://www.yrityskummit.fi/>

### Type of Support

Mentoring

### Description of the support

The activities of business mentors are based on voluntary work to improve the activities of SMEs, bring tacit know-how and offer support in order to relieve the lack of resources in SMEs. Business Mentors offer their support and experience free of charge to SMEs. Target group: SMEs in different phases of business development and internationalisation e.g. planning import/export, penetrating new markets, creating cooperation networks and finding customers.

Company selection: All SMEs in need of different kind of assistance in home market and international business.

Business mentors work with local companies in order to support internationalisation. Mentors offer companies tacit know-how, practical advice and new networks and contacts.

### Agency Responsible for Support

[www.Yrityskummit.fi](http://www.Yrityskummit.fi)

Regional contact via Josek Ltd.; Karelia UAS has some earlier cooperation with the network.

### Is this Specific to Renewable Energy businesses?

No, mentors have a range of expertise

### Is this a local, regional or national support?

National network, with regional mentors/networks

### Other useful/relevant information

Potential synergies with GREBE Entrepreneurship Enabler Scheme in Finland.

---

## Product Track

### Link to support information on website

<http://tuotevayla.fi/en>

### Type of Support

Expert service / grant funding for micro-enterprises

### Description of the support

Tuoteväylä - Product Track service provides advice, know-how and financing to promising inventions and innovative business ideas

### Agency Responsible for Support

Centre for Economic Development, Transport and the Environment.

<https://www.ely-keskus.fi/en/web/ely-en/>

### **Maximum and minimum funding available**

The maximum aid amount paid to companies for invention development projects accounts for 50% of approved costs..

### **Is this Specific to Renewable Energy businesses?**

No

### **Is this a local, regional or national support?**

National, available via regional Centres for Economic Development, Transport and the Environment.

### **Other useful/relevant information**

Centres for Economic Development, Transport and the Environment advise companies also on other issues, such as licencing (manufacturing products of other companies).

The service was developed by the Finnish Inventions Association (Keksintösäätiö) that continues the advisory/information activities.

---

## **Yrityspörssi (portal to sell/buy business enterprises)**

### **Link to support information on website**

<http://www.yritysporssi.fi/en>

### **Type of Support**

Portal, information service

### **Description of the support**

Portal includes enterprises for sale, wanted and service offers.

### **Agency Responsible for Support**

The Federation of Finnish Enterprises

### **Is this Specific to Renewable Energy businesses?**

No

### **Is this a local, regional or national support?**

National

### **Other useful/relevant information**

The Federation of Finnish Enterprises provides information/advisory for its members.

---

## **Business Transfer Support**

### **Link to support information on website**

<http://www.omistajanvaihdosseura.fi/>

### **Type of Support**

Association that provides Information and advisory service assisting companies in Business Transfers.

### **Description of the support**

As above.

**Agency Responsible for Support**

Finnish Business Transfer Society

**Is this Specific to Renewable Energy businesses?**

No

**Is this a local, regional or national support?**

National

---

**Franchising support****Link to support information on website**

<http://www.franchising.fi/etusivu>

**Type of Support**

Finnish Franchising Association provides Information, advisory and training services assisting entrepreneurs interested in Franchising businesses.

**Description of the support**

As above.

**Agency Responsible for Support**

Finnish Franchising Association

**Is this Specific to Renewable Energy businesses?**

No

**Is this a local, regional or national support?**

National

---

**Training for entrepreneurs****Link to support information on website**

[http://www.te-services.fi/te/en/employers/for\\_entrepreneurs/services\\_new\\_entrepreneurs/training\\_entrepreneurs/index.html](http://www.te-services.fi/te/en/employers/for_entrepreneurs/services_new_entrepreneurs/training_entrepreneurs/index.html)

**Type of Support**

Public training service

**Description of the support**

Career coaching:

Includes:

- General idea of enterprising
- Practical aspects of setting up a business and working as an entrepreneur
- Surveys and assesses the participants' skills and capacities for enterprising

Entrepreneur training:

Provides basic information about:

- entrepreneurship
- setting up a business
- various aspects of enterprising, including funding, marketing, communications, taxation and financial administration.
- Development of business ideas and business plans

For example, the training provides more in-depth knowledge about funding, accounting and taxation, marketing, the risks of enterprising, and acting as an employer. The aim may be to develop areas that the entrepreneur finds problematic and to promote cooperation between enterprises. The training may aim for completing a further vocational qualification for entrepreneurs or one of its modules.

### **Agency Responsible for Support**

TE-Services (public employment and business services)

<http://www.te-services.fi/te/en/index.html>

### **Is this Specific to Renewable Energy businesses?**

No

### **Is this a local, regional or national support?**

National, delivered through regional and local offices

---

## **Qualification for an Entrepreneur**

### **Link to support information on website**

<http://www.pkky.fi/hakijalle/koulutustarjonta/yhteiskuntatieteiden-liiketalouden-ja-hallinnon-ala/liiketalous-ja-kauppa/Sivut/yritystajan-ammattitutkinto.aspx>

(only in Finnish)

### **Type of Support**

Training

### **Description of the support**

Training for reaching a vocational degree of and entrepreneur.

### **Agency Responsible for Support**

North Karelia Municipal Education and Training Consortium

### **Is this Specific to Renewable Energy businesses?**

No

### **Is this a local, regional or national support?**

Regional / national

---

## **Business advisory and development services**



**Link to support information on website**

[http://www.pikes.fi/en\\_GB/web/pikes-en](http://www.pikes.fi/en_GB/web/pikes-en)

<http://www.josek.fi/eng/>

<http://www.keti.fi/en/web/ketieng/>

**Type of Support**

Expert services

**Description of the support**

Business development and advisory for the companies in the region.

**Agency Responsible for Support**

- PIKES Ltd,
- Josek Ltd.
- Ketj Ltd.

**Is this Specific to Renewable Energy businesses?**

No, but there is RE expertise in each development company/centre

**Is this a local, regional or national support?**

Local/regional

---

**RE and Business Training and Expert Services****Link to support information on website**

<http://www.karelia.fi/en/services/karelia-global-education/our-solutions/bioeconomy-expertise>

<http://www.karelia.fi/en/services/local-expert-services/energy-and-environment>

**Type of Support**

Training

**Description of the support**

Training courses/expert services in RE, such as procurement of RE solutions/ decentralised energy solutions, business development.

Course assignments, trainees and thesis works both in business and renewable energy.

**Agency Responsible for Support**

Karelia UAS

**Is this Specific to Renewable Energy businesses?**

Yes

**Is this a local, regional or national support?**

Local/regional

---

**Entrepreneurship and Innovation Services of University of Eastern Finland**

**Link to support information on website**

<http://www.uef.fi/en/web/kehittamispalvelut/entrepreneurship-and-innovation-services>

**Type of Support**

Information / research transfer into business (in connection to the UEF R&D activities)

**Description of the support**

Entrepreneurship and Innovation Services is an organisation of experts supporting and promoting the commercialisation of research findings and expertise emerging from the University of Eastern Finland. We work in cooperation with the university's research groups and business and industry in evaluating the commercial potential of research, and we facilitate knowledge transfer to support the birth of new business activities and entrepreneurship.

Our services range from the promotion of innovation skills to invention disclosure activities, from the planning of commercially-oriented research projects to their implementation, from utilisation assessments of innovation ideas to the protection of immaterial property rights and technology transfer for commercial use. We also serve as a link connecting our researchers and aspiring entrepreneurs with business and industry, regional and national development and mediator organisations, and funders of start-up companies

**Agency Responsible for Support**

University of Eastern Finland ([www.uef.fi](http://www.uef.fi))

**Is this Specific to Renewable Energy businesses?**

No

**Is this a local, regional or national support?**

Regional/National

---

**Business Incubator****Link to support information on website**

[http://www.tiedepuisto.fi/business\\_development/business\\_incubator](http://www.tiedepuisto.fi/business_development/business_incubator)

**Type of R&D Support**

Business incubator, expert services

**Description of the support**

The business incubator helps in implementing the business idea and guides companies through the challenging early years into a growth path. Pre-incubator assists in developing the competence, finding the required expertise, customer contacts, partners, financing opportunities, as well as compiling a functional business model. Basing on the business model, incubator services cooperate with entrepreneur in establishing a comprehensive business plan. The pre-incubator is followed by the establishment of the company and actual incubator phase, where comprehensive support and supporting environment is provided for starting up the business.

The business incubator cooperates closely with the University of eastern Finland and Karelia UAS to provide support in each specific area, such as making international contacts.

**Agency Responsible for Support**

Joensuu Science Park

<http://www.tiedepuisto.fi/frontpage>

**Is this Specific to Renewable Energy businesses?**

No

**Is this a local, regional or national support?**

Regional

---

**Joensuu Science Park Business Development Services****Link to support information on website**

[http://www.tiedepuisto.fi/business\\_development](http://www.tiedepuisto.fi/business_development)

**Type of Support**

Experts / business support

**Description of the support**

Joensuu Science Park provides a portfolio of expert services in business development, including:

- Situational analyses
- Business strategy services
- Product development and innovation services
- Services for developing marketing, sales and communications
- Services for improving processes, productivity and management
- Road to internationalisation

Services descriptions available at: [http://www.tiedepuisto.fi/business\\_development](http://www.tiedepuisto.fi/business_development)

**Agency Responsible for Support**

Joensuu Science Park

<http://www.tiedepuisto.fi/frontpage>

**Is this Specific to Renewable Energy businesses?**

No, available for all sectors

**Is this a local, regional or national support?**

Regional/local

---

**Research and Development Supports****Workplace Innovations****Link to support information on website**

<http://www.tekes.fi/en/funding/companies/organisation-development/>

**Type of Support**

Grant funding

**Description of the support**

Funding for companies to improve productivity and quality of the working-life.

In order to be funded, projects are required to

- Significantly improve productivity and the quality of working life
- Create new, innovative ways to operate
- Support know-how and innovation
- Be implemented in cooperation by the management and staff.
- A project must have wider novelty value so that its results can be utilised also in other organisations.

### Agency Responsible for Support

TEKES <http://www.tekes.fi/>

### Maximum and minimum funding available

The funding can be a maximum of 50% of the costs approved for the project – not more than €100,000.

### Is this Specific to Renewable Energy businesses?

No

### Is this a local, regional or national support?

National

---

## Development and Piloting

### Link to support information on website

<http://www.tekes.fi/en/funding/companies/piloting/>

### Type of Support

Low interest loan without collaterals

### Description of the support

Funding for companies renewing their existing products or services, production methods and business models, or develop new ones. TEKES provides funding for companies' development projects in the form of a loan.

The loan is intended for projects, where the commercialisation of the product is near, or where existing know-how is being applied for generating new business activity. TEKES shares the risks if the project fails or its results are unusable for business operations as intended. (In such a case, a proportion of the loan may be retroactively converted into a grant).

Piloting can involve

- Testing of a new innovative product, production method, process, or technology in, for example, a production facility.
- Development and testing of a new innovative operating model or system in real operating environment, for example, in a city district, traffic, or as part of customer companies' operations.
- Development of a new innovative service and ensuring its functionality in the customer's operating environment and processes.

Involving clients in the development work and piloting is beneficial in all business sectors. Piloting can be quick, as is often the case in the software development sector, or it can involve long development processes, such as those in the energy or processing industries.

Piloting can be part of the R&D project or a separate project, for example, before the commercialisation phase of a solution.

In Tekes funding, it is important that the piloting is related to demonstrating the functionality of a new innovative solution. The project's novelty value is estimated by comparing the results to products and services already on the market, or applications and solutions in use.

### Agency Responsible for Support

TEKES <http://www.tekes.fi/>

### Maximum and minimum funding available

Funding rates differ depending on the company size. For SMEs' development and piloting projects, Tekes loan is 50 / 70 per cent of the project's eligible total costs. The loan is intended for development projects, where Tekes's share of funding is at least EUR 100,000.

If the project is small and Tekes's share of funding is no more than EUR 100,000, Tekes may provide de minimis aid for the project, covering up to 50 per cent of the project's overall costs.

(SME's are small and medium-sized companies, whose staff headcount is less than 250, turnover max €50 million or the balance sheet total is max €43 million.)

### Is this Specific to Renewable Energy businesses?

No

### Is this a local, regional or national support?

National

---

## Companies' Research Projects

### Link to support information on website

<http://www.tekes.fi/en/funding/companies/research-and-development/>

### Type of Support

Grant funding

### Description of the support

Tekes offers grants to companies' research projects, where the main emphasis is on creating new competence and knowledge. After the company research project additional development is needed to bring an innovation into the market. Companies are encouraged to execute the research project in collaboration with another company or research group. When the partner is a university or a research institute, Tekes requires that companies' needs serve as a starting point for the project plan.

### Agency Responsible for Support

TEKES <http://www.tekes.fi/>

### Maximum and minimum funding available

SMEs can receive a grant of up to 50 per cent of the research project's eligible total costs.

### Is this Specific to Renewable Energy businesses?

No

### Is this a local, regional or national support?

National

---

## Planning for Global Growth

### Link to support information on website

<http://www.tekes.fi/en/funding/companies/planning-for-global-growth/>

### Type of Support

Grant for young/growth companies

### Description of the support

Funding for SME's:

**Companies less than 5 years old:** young SMEs capable of rapid international growth are eligible for a grant worth up to 75% of the project's total costs if the company:

- is less than 5 years old
- is small in size
- has a new business idea with genuine international market potential

Tekes pays 60 per cent of the grant after the funding decision and the rest once the project report is approved at the end of the project. The company must be able to fund at least 50 % of the project costs from its own funding sources. The maximum Tekes funding for a projects is € 50 000. The Planning for global growth funding must comply with de minimis terms and conditions.

**Other growth companies:** Small and medium-sized companies that aim at international growth and have a credible business idea are eligible to receive a planning for global growth grant worth up to 50 per cent the project's total costs. The maximum amount of funding under the de minimis conditions is €100 000. In some cases, Tekes may pay a maximum of 60 per cent of the de minimis grant in advance, after the funding decision is made in Tekes.

Requirements:

- In order for a company to be eligible for funding it must have a committed desire for growth and internationalisation
- A credible business idea that has genuine potential for international business success.
- The funding is intended to support the development of an area of business operations, a business idea, product or service that is new to a specific market and is based on a high standard of expertise and/or advanced technology.
- The company must have sufficient resources, a strong, qualified team, and an understanding of the target market.
- Key personnel within the company must be fully committed to the company and its development. The main project team must work within the company in question.
- The company must have sufficient financial resources and be capable of covering its own contribution towards the expenses associated with the project. Moreover, the company must take into account that Tekes grants are always paid in arrears, against actual costs incurred by the project.

### Agency Responsible for Support

TEKES <http://www.tekes.fi/>

### Maximum and minimum funding available

Funding rates presented above.

### Is this Specific to Renewable Energy businesses?

No

**Is this a local, regional or national support?**

National

**Other useful/relevant information**

For specific cooperation with Russia, Finnish-Russian Chamber of Commerce (<http://www.svkk.fi/>) provides supporting advisory and marketing services; and cooperation with Sweden is supported by the Finnish-Swedish Chamber of Commerce, FINSVE <http://finsve.com/>.

---

**VTT services****Link to support information on website**

<http://www.vttresearch.com/services>

**Type of Support**

Research and Development Support /Cooperation

**Description of the support**

VTT's services increase the competitiveness of our customers' businesses, promote the creation of new business, and improve and speed up R&D.

We offer our customers access to our cross-disciplinary technological and business expertise, unique research infrastructure, and comprehensive partnership networks. We create customized solutions in close co-operation with our customers.

**Agency Responsible for Support**

VTT (VTT Technical Research Centre of Finland Ltd.)

[www.vtt.fi](http://www.vtt.fi)

**Is this Specific to Renewable Energy businesses?**

Not only, but very relevant

**Is this a local, regional or national support?**

National, but available also for enterprises located in Eastern Finland

---

**LUKE services****Link to support information on website**

<http://www.luke.fi/en/services/>

**Type of Support**

Research and Development Support /Cooperation

**Description of the support**

LUKE provides research & expert services, testing and production services, as well as IPR and commercialisation services.

**Agency Responsible for Support**

Natural Resources Institute Finland [www.luke.fi](http://www.luke.fi)

[www.luke.fi](http://www.luke.fi)

**Is this Specific to Renewable Energy businesses?**

Not only, but very relevant.

**Is this a local, regional or national support?**

National, office also in Joensuu & North Karelia.

---

**Social and Community supports (focused on not for profit)****Support for recruitment/Pay subsidy****Link to support information on website**

[http://www.te-services.fi/te/en/employers/find\\_an\\_employee/support\\_recruitment/index.html](http://www.te-services.fi/te/en/employers/find_an_employee/support_recruitment/index.html)

Type of Social Enterprise/Community Enterprise Support (be specific) Social enterprises have the same support measures as private enterprises. There are some differences in getting the support for recruitment and pay subsidies. These are related to illness, disability and long-term unemployment of the person recruited. Otherwise, there are no support measures in this category.

---

**Other-** e.g. Incubation space or office space and anything that doesn't fit in with the other categories-

**Start Me Up – Business Idea Competition****Link to support information on website**

[http://www.tiedepuisto.fi/startmeup\\_english](http://www.tiedepuisto.fi/startmeup_english)

**Type of Support**

Business idea competition with following supporting measures

**Description of the support**

Business idea competition followed by a supporting service with business development expert services.

**Agency Responsible for Support**

Joensuu Science Park, number of supporting partners

**Maximum and minimum funding available or maximum value of funding if in kind (or alternative measure)**

1<sup>st</sup> prize 15 000 €.

**Is this Specific to Renewable Energy businesses?**

No

**Is this a local, regional or national support?**

Local/regional

---

**Draft Programme****Link to support information on website**

<http://draft.karelia.fi/en/>



**Type of Support**

Grant with conditions (managed by Karelia UAS)

**Description of the support**

A support programme for students/staff of Karelia UAS and UEF (University of Eastern Finland) to develop new business ideas.

**Agency Responsible for Support**

Karelia UAS / University of Eastern Finland

**Maximum and minimum funding available or maximum value of funding if in kind (or alternative measure)**

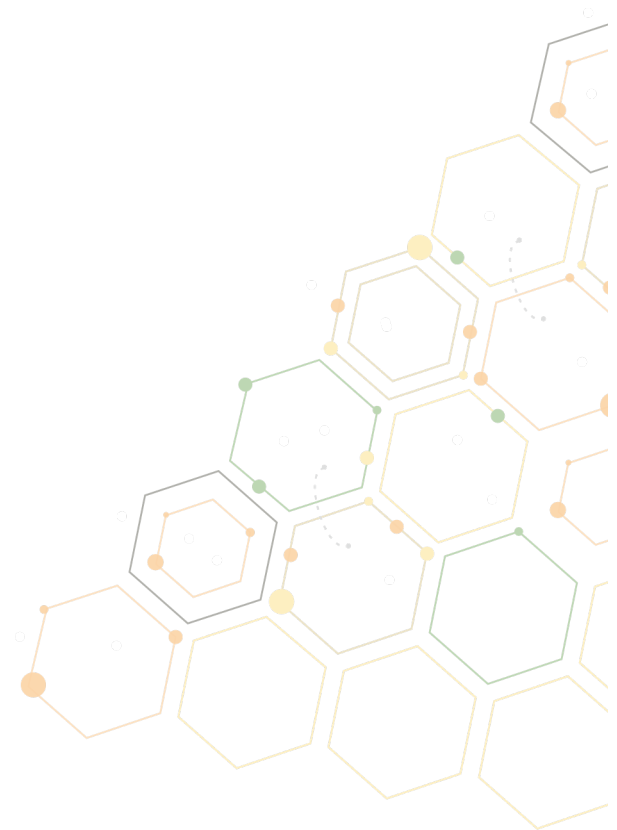
€4000

**Is this Specific to Renewable Energy businesses?**

No

**Is this a local, regional or national support?**

Local/Regional



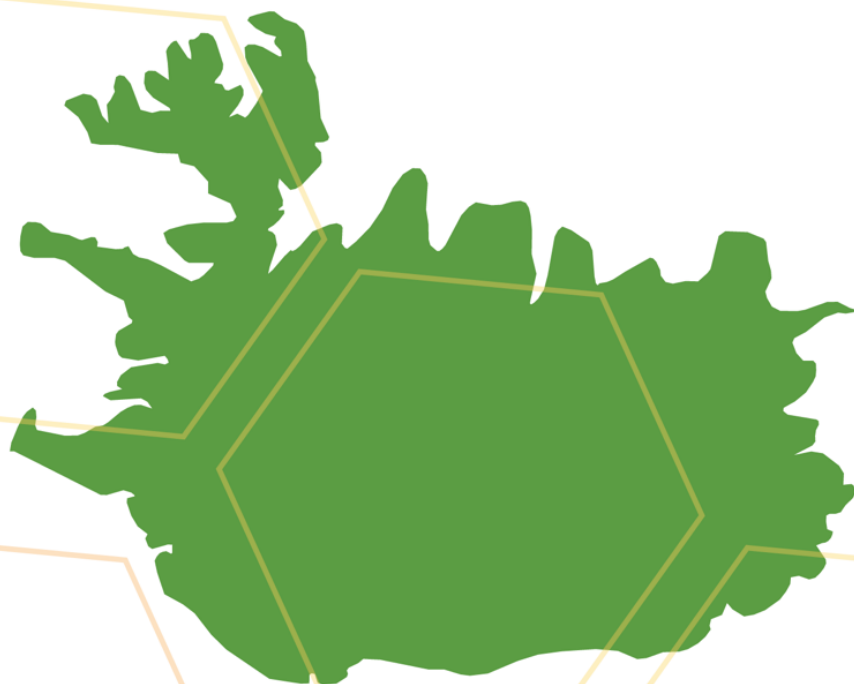


# GREBE

Generating Renewable Energy  
Business Enterprise

[www.grebeproject.eu](http://www.grebeproject.eu)

## Iceland



Northern Periphery and  
Arctic Programme  
2014-2020





## Iceland

### What kind of agencies offer support to SMEs?

There are few different agencies which support SMEs in Iceland e.g.. ICI, development agencies in the country and other advisory and accounting offices. Each agency has a different role and focuses on businesses of different size, potential or area of focus.

There is some variety of supports for enterprise of all kinds in Iceland. These include access to finance, management development, mentoring supports, business development programs, market supports and trade promotion. Some of these supporting institutes are state supported and other private owned.

### Is there one agency which is the first place for businesses to go?

In Iceland ICI plays the role of the 'first-stop-shop' support service for micro and small businesses. ICI receives revenues both from public and private partners. ICI is located in each region. ICI provides advice and direction, to anyone who wishes to start or expand a business. ICI can also provide or point out funding for projects that meet certain criteria (generally with regard to export potential) and other non-financial supports such as training and mentoring.

Local development agencies also play an important role for SMEs.

Companies with clear high growth potential can be fast-tracked to the next level of support available from ICI to help them start, grow, innovate and win export sales in global markets through Enterprise Europe Network (EEN). Promote Iceland also assists Icelandic companies seeking to grow internationally through competence building programs as well as international events, such as trade fairs, press trips, and trade delegations. This is done in close cooperation with Icelandic embassies and consulates abroad, as well as bilateral chambers of commerce. They can provide funding, links and supports for companies - from entrepreneurs with business propositions for a high potential start-up through to large companies expanding their activities, improving efficiency and growing international sales.

### Is it clear to the SME where they should go for support?

It is not clear to SME's where to go for support in Iceland. SMEs can receive basic information on ICI webpage, they though need a better online tool which sets out the variety of supports available to all enterprises across all sectors.

### Are business supports restricted to certain types of business, or enhanced for certain types of SMEs (e.g. only available for manufacturing or for exporters)?

There is a particular focus on research and development and on businesses with export potential.

### Are there special supports for RE businesses?

Iceland is in a unique position, about 85% of total primary energy consumption in Iceland is derived from domestically produced renewable energy resource. There are specific research and development fund for RE owned by the government.

Business supports available in Iceland are described in more detail in the coming pages under the following themes:

- Financial Support (grants, loans, equity investment)
- Taxation or welfare supports or concessions for businesses
- Soft supports e.g. mentoring, training, specialist advice, networks
- Research and Development supports
- Social and Community supports (focused on not for profit)
- Other- e.g. Incubation space or office space

## Financial Support (grants, loans, equity investment)

### Energy Fund

#### Link to support information on website

<http://www.orkustofnun.is/orkustofnun/rad-og-nefndir/orkusiodur/>

#### Type of Finance Support

Grant

#### Description of the support

Provides funding for specific projects in the field of efficient energy use, including for education and informative projects. The fund also provides funding for projects that promotes the use of domestic energy instead of fossil fuels and strengthen international cooperation in such projects.

#### Agency Responsible for Support

Orkustofnun (National energy Authority)

[www.orkustofnun.is](http://www.orkustofnun.is)

#### Maximum and minimum funding available

50% of cost is eligible

#### Is this Specific to Renewable Energy businesses?

Yes

#### Is this a local, regional or national support?

National support

---

### Geothermal prospecting

#### Link to support information on website

<http://www.orkustofnun.is/orkustofnun/rad-og-nefndir/orkusiodur/>

#### Type of Finance Support

Loans

#### Description of the support

The main purpose of the fund is to promote the further use of geothermal energy for heating in the country with the aim of improving living conditions and increasing access to the quality and potential of geothermal entail and to reduce the use of fossil fuels for heating and reduce the cost of the subsidies (from the government) for heating in cold areas.

#### Agency Responsible for Support

Orkustofnun (National energy Authority)

<http://www.orkustofnun.is/>

**Maximum and minimum funding available**

Up to 60% of total cost

**Is this Specific to Renewable Energy businesses?**

Yes

**Is this a local, regional or national support?**

National support

---

**Rannsóknarstyrkir Orkusjóðs (National energy authority research grants)****Link to support information on website**

<http://www.orkustofnun.is/orkustofnun/umsoknir/rannsoknarstyrkir-orkusjods/>

**Type of Finance Support**

Grant

**Description of the support**

Research grants for:

- cost-effective energy efficiency and energy saving
- domestic energy and alternative fuels and fossil fuel savings
- the acquisition of knowledge in these areas and sharing
- research, development and cooperation to this aim
- job creation in these fields

**Agency Responsible for Support**

Orkustofnun (National energy Authority)

[www.orkustofnun.is](http://www.orkustofnun.is)

**Maximum and minimum funding available**

No

**Is this Specific to Renewable Energy businesses?**

Yes

**Is this a local, regional or national support?**

National support

---

**Grants for district heating****Link to support information on website**

<http://www.os.is/orkustofnun/umsoknir/eingreidslur/>

**Type of Finance Support**

Subsidies

**Description of the support**

Grants for project in renewable energy and sustainable fisheries. The goal is to support innovation in that field.

Subsidies for using green energy f.ex. heat pumps with the objective to save energy and improved energy efficiency of house heating:

**Agency Responsible for Support**

Orkustofnun (National energy Authority)

[www.orkustofnun.is](http://www.orkustofnun.is)

**Is this Specific to Renewable Energy businesses?**

Yes

**Is this a local, regional or national support?**

National support

---

**Frumkvöðlasjóður Íslandsbanka****Link to support information on website**

<https://www.islandsbanki.is/um-islandsbanka/samfelagsleg-abyrgd/frumkvodlasjodur/>

**Type of Finance Support**

Grant

**Description of the support**

Grants for project in renewable energy and sustainable fisheries. The goal is to support innovation in that field.

**Agency Responsible for Support**

Íslandsbanki

[www.isb.is](http://www.isb.is)

**Maximum and minimum funding available**

50% of cost is eligible

**Is this Specific to Renewable Energy businesses?**

Yes and sustainable fisheries

**Is this a local, regional or national support?**

National support

---

**Átak til atvinnusköpunar****Link to support information on website**

<http://nmi.is/studningur/styrkir/atak-til-atvinnuskoepunar/>

**Type of Finance Support**

Grant

**Description of the support**

Átak til atvinnusköpunar is a fund for small innovation projects and marketing actions especially for entrepreneurs and SMEs.

**Agency Responsible for Support**

Innovation center Iceland

[www.nmi.is](http://www.nmi.is)

**Maximum and minimum funding available**

50% of cost is eligible

**Is this Specific to Renewable Energy businesses?**

No

**Is this a local, regional or national support?**

National support

---

**Tækniþróunarsjóður (Technology Development fund)****Link to support information on website**

<http://en.rannis.is/funding/research/technology-development-fund/nr/545>

**Type of Finance Support**

Grant

**Description of the support**

The role of the fund is to support research and development activities, which aim towards innovation in Icelandic industry. The Technology Development Fund is a competitive fund which issues its calls for proposals twice a year.

**Agency Responsible for Support**

Rannis (The Icelandic Centre for Research)

[www.rannis.is](http://www.rannis.is)

**Maximum and minimum funding available**

The maximum contribution towards projects can amount to a total of up to ISK 45 million for a period of three years; ISK 30 million during two years or ISK 15 million during one year, which can be variously distributed during the years of support, depending on the progress of the project and its funding requirements. Up to one third of the total grant can be used for market purposes (see the Icelandic rules for definition of allowed project parts) Applicants' matching contribution of 50% is required. Support lasting up to three years may be applied for, although the fund's board of directors only confirms a grant for one year at a time. Continued support depends on progress and the fulfilment of contractually agreed results.

**Is this Specific to Renewable Energy businesses?**

No

**Is this a local, regional or national support?**

National support

---

## Icelandic student Innovation fund

### Link to support information on website

<https://en.rannis.is/funding/research/icelandic-student-innovation-fund/nr/570>

### Type of Finance Support

Grant

### Description of the support

The goal of the Icelandic Student Innovation Fund is to provide an opportunity for universities, research institutions and companies to recruit students, in graduate and postgraduate studies, to undertake ambitious and challenging research projects during the summer time.

### Agency Responsible for Support

Rannis (The Icelandic Centre for Research)

[www.rannis.is](http://www.rannis.is)

### Maximum and minimum funding available

The grant is presented in the form of monthly grants for the student, but the company or the relevant supervisor is to supply facilities and pay material cost. The fund monitors the progress of the project over the summer, whilst the supervisor is responsible for the actual execution of the project and the delivering of a final report at the end of the summer.

### Is this Specific to Renewable Energy businesses?

No

### Is this a local, regional or national support?

National support

---

## Uppbyggingarsjóður (structural fund for each region in Iceland)

### Link to support information on website

- <http://www.eything.is/menningarrad/uppbyggingarsjodur>
- <http://www.vestfiridir.is/Uppbyggingarsjodur/>
- <http://www.austurbru.is/is/uppbyggingarsjodur-austurlands-1>
- <http://www.sass.is/radgjof-2/styrkir-til-eflingar-atvinnulifs-og-nyskopunar-2/>
- <http://www.atthing.is/uppbyggingarsjodur/>
- [http://www.menningarviti.is/default.asp?sid\\_id=61499&tre\\_rod=002|&tId=11](http://www.menningarviti.is/default.asp?sid_id=61499&tre_rod=002|&tId=11)
- <http://sss.is/starfsemi/uppbyggingarsjodur>
- <http://www.ssnv.is/is/uppbyggingarsjodur>

### Type of Finance Support

Grant

### Description of the support

These grants are in all regions of Iceland. Innovation projects as well as cultural project are funded. The funding of the grants comes from the government but are allocated locally (or in each region of Iceland).

### Agency Responsible for Support

Ministry of Industries and innovation



[www.atvinnuvegaraduneyti.is](http://www.atvinnuvegaraduneyti.is)

### Maximum and minimum funding available

50% of cost is eligible

### Is this Specific to Renewable Energy businesses?

No

### Is this a local, regional or national support?

Regional support

---

## Taxation or welfare supports or concessions for businesses

### Skattafrádráttur rannsókna- og þróunarverkefna (tax deduction for research and development projects).

#### Link to support information on website

<https://www.rannis.is/sjodir/atvinnulif/skattfradrattur/>

#### Type of Taxation or Welfare Support (be specific)

Taxation.

#### Description of the support

Companies that have received confirmation Rannís of research or development project have the right to tax deduction.

Tax deduction is based on an each project.. A company that owns a research and development project are entitled to deduction from the assessed income tax of up to 20% of the expenses incurred for these projects. The maximum expenses for calculation for each company is ISK 100,000,000 in operating year.

#### Agency Responsible for Support

Rannís (The Icelandic Centre for Research)

[www.rannis.is](http://www.rannis.is)

### Maximum and minimum funding available

Up to 20% of income tax. Maximum expenses for tax deduction for each project is ISK 100, 000,000

### Is this Specific to Renewable Energy businesses?

No

### Is this a local, regional or national support?

National

#### Other useful/relevant information

[https://www.rannis.is/media/skattaivilnun/Handbok\\_mars15.pdf](https://www.rannis.is/media/skattaivilnun/Handbok_mars15.pdf)

## Soft supports

### Start up energy

#### Link to support information on website

<http://www.startupenergyreykjavik.com/en/>

#### Type of Support

Mentoring program

#### Description of the support

Startup Energy Reykjavik is a mentorship-driven seed stage investment program with focus on energy related business projects.

#### Agency Responsible for Support

Klak Innovit (Icelandic start-ups)

<http://www.icelandicstartups.com/>

#### Maximum and minimum funding available

Not applicable

#### Is this Specific to Renewable Energy businesses?

Yes

#### Is this a local, regional or national support?

National support

---

### Konur í orkumálum – Women Network in Energy

#### Link to support information on website

<https://www.facebook.com/Konur-%C3%AD-orkum%C3%A1lum-259616860889418/?fref=ts>

#### Type of Support

Network

#### Description of the support

This is a network for women in the energy business.

#### Agency Responsible for Support

Community on facebook.

<https://www.facebook.com/Konur-%C3%AD-orkum%C3%A1lum-259616860889418/?fref=ts>

#### Maximum and minimum funding available

Not applicable

#### Is this Specific to Renewable Energy businesses?

Yes

#### Is this a local, regional or national support?

National support

## Samband sveitarfélaga á köldum svæðum –

Association of municipalities on cold areas

### Link to support information on website

<http://ssks.is/>

### Type of Support

Network

### Description of the support

The network aims:

- working to decrease energy costs for heating "cold areas"
- to promote (further) geothermal prospecting
- to gather and share information in energy to its members
- to promote public awareness of ways of save energy.
- The network consist of 37 municipalities in Iceland where heating cost is high and no useable geothermal.

### Agency Responsible for Support

Samband sveitarfélaga á köldum svæðum (Association of municipalities on cold areas)

[www.skss.is](http://www.skss.is)

### Maximum and minimum funding available

No funding. Network and lobbying.

### Is this Specific to Renewable Energy businesses?

Yes

### Is this a local, regional or national support?

National

---

## Iceland geothermal

### Link to support information on website

<http://www.icelandgeothermal.is/>

### Type of Support

Cluster

### Description of the support

Iceland Geothermal is a platform where you can access all general information about geothermal energy in Iceland and leads you to the right coordinator if you are building up infrastructure or business in relation to the resource of geothermal.

Iceland Geothermal is a non-profit organisation that was established in February 2013. IG is an industry driven cluster cooperation partnership which focuses on the field of geothermal energy. The Iceland Geothermal Cluster Initiative was founded by 43 diverse members, including companies, associations and institutions.

### Agency Responsible for Support

Iceland geothermal

[www.icelandgeothermal.is](http://www.icelandgeothermal.is)

### Maximum and minimum funding available

Not relevant

### Is this Specific to Renewable Energy businesses?

Yes

### Is this a local, regional or national support?

National

---

## Research and Development supports

### Icelandic Research Fund

#### Link to support information on website

<https://en.rannis.is/funding/research/icelandic-research-fund/nr/527>

#### Type of R&D Support

Grant types

- Project grants
- Grant of excellence
- Postdoctoral fellowship
- Doctoral student grant

#### Description of the support

The IRF awards funding to research students and defined research projects led by individuals, research teams, universities, research institutes, and companies.

#### Agency Responsible for Support

The Icelandic Centre for Research

[www.rannis.is](http://www.rannis.is)

### Is this Specific to Renewable Energy businesses?

No

### Is this a local, regional or national support?

National

#### Other useful/relevant information

<https://en.rannis.is/media/rannsoknasjodur/IRF-Handbook-2016.pdf>

---

## Other

### Incubation spaces

#### Link to support information on website

<http://nmi.is/studningur/frumkvoedlasetur/>

#### Type of Support

Incubations spaces.

**Description of the support**

Leasing of office space/desk on a low fee. Access to meeting facilities, facilities for workshops, research and prototype construction etc.

Professional advice and support from experts Innovation Centre

Creative environment and powerful network

Lectures and workshops on relevant factors in the entrepreneurial environment.

**Agency Responsible for Support**

Innovation Center Iceland

[www.nmi.is](http://www.nmi.is)

**Is this Specific to Renewable Energy businesses?**

No

**Is this a local, regional or national support?**

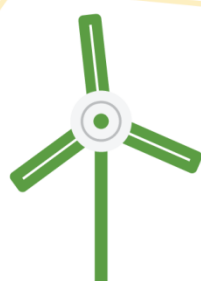
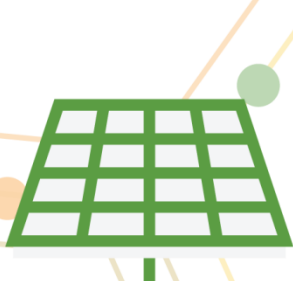
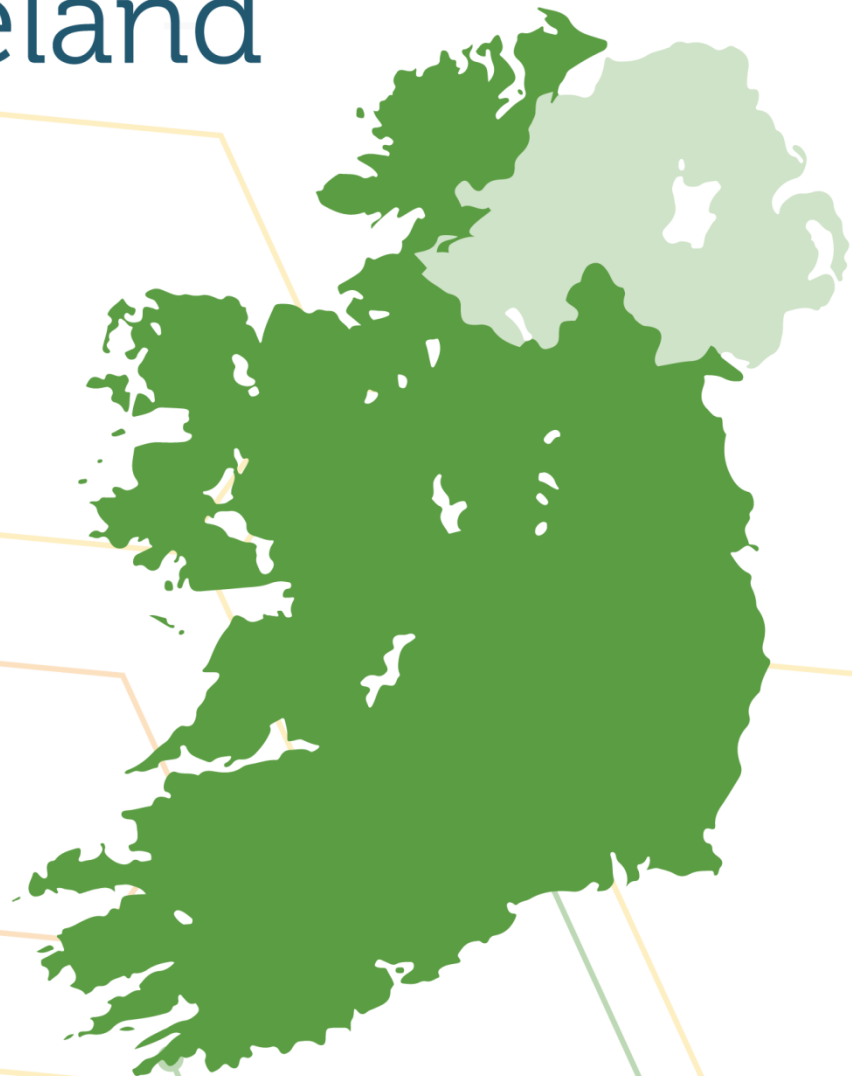
Local

# GREBE

Generating Renewable Energy  
Business Enterprise

[www.grebeproject.eu](http://www.grebeproject.eu)

## Ireland



Northern Periphery and  
Arctic Programme  
2014-2020



## Ireland

### What kind of agencies offer support to SMEs?

There are a number of different agencies which support SMEs in Ireland. Each agency has a different role and focuses on businesses of different size, potential or area of focus. Although the business support system is largely funded and organized through central government there are a series of local offices which provide the support to local businesses.

There is a range of supports for enterprise of all kinds in Ireland. These include access to finance, management development, mentoring supports, business development programmes, market supports and trade promotion.

### Is there one agency which is the first place for businesses to go?

The Local Enterprise Offices (LEOs, <https://www.localenterprise.ie/>) are the 'first-stop-shop' state support service for micro and small businesses in each local area. The LEOs provide advice and direction, covering all government supports and requirements, to anyone who wishes to start or expand a business. The LEOs can also provide funding for projects that meet certain criteria (generally with regard to export potential) and other non-financial supports such as training and mentoring.

Companies with clear high growth potential can be fast-tracked to the next level of support available from Enterprise Ireland (<https://www.enterprise-ireland.com/en/>) which works in partnership with Irish enterprises to help them start, grow, innovate and win export sales in global markets. They provide funding and supports for companies - from entrepreneurs with business propositions for a high potential start-up through to large companies expanding their activities, improving efficiency and growing international sales.

Microfinance Ireland provides support in the form of loans for up to €25,000, available to microenterprises employing less than 10 people, with viable business propositions, that do not meet the conventional risk criteria applied by banks.

There are also a variety of state backed equity investment funds including the WDC SME investment fund (<http://www.wdc.ie/wdc-investment-fund/sme-investment-fund/>) which operates in Ireland's Western Region.

Supports are also available for businesses from LEADER under the National Rural Development Programme 2014-2020 (<http://www.agriculture.gov.ie/ruralenvironment/ruraldevelopmentprogrammerdp2014-2020/>). LEADER is implemented at a local area through the Local Development Strategy (LDS) which outlines a range of Actions which will be delivered under three main themes one of which is Rural Environment which includes the development of renewable energy.

### Is it clear to the SME where they should go for support?

An online tool which sets out the variety of supports available to all enterprises across all sectors is embedded or linked to over 30 Government websites including Department of Enterprise, Jobs and Innovation website and the websites of the Local Enterprise Offices and Enterprise Ireland.

<http://www.supportingsmes.ie/businessdetails.aspx>

### Are business supports restricted to certain types of business, or enhanced for certain types of SMEs (e.g. only available for manufacturing or for exporters)?

There is a particular focus on manufacturing and on businesses with export potential.

### Are there special supports for RE businesses?

There are specific research and development grants available from the Sustainable Energy Authority of Ireland (SEAI) but there is little direct support specifically for renewable energy businesses in Ireland (although

there are a number of demand and supply side supports aimed at stimulating the market (see [here link to WP3.1 for more information](#)).

Business supports available in the Republic of Ireland are described in more detail in the coming pages under the following themes:

- Financial Support (grants, loans, equity investment)
- Taxation or welfare supports or concessions for businesses
- Soft supports e.g. mentoring, training, specialist advice, networks
- Research and Development supports
- Social and Community supports (focused on not for profit)
- Other- e.g. Incubation space or office space

---

## Financial Support (grants, loans, equity investment)

### Micro Enterprise Loan Fund

#### Link to support information on website

<http://www.microfinanceireland.ie>

#### Type of Finance Support

Loan

#### Description of the support

Microfinance Ireland is a Government initiative providing loans from €2k to €25k to commercially viable start-up, newly established or growing microenterprises that have been declined credit by the banks.

#### Agency Responsible for Support

Micro Finance Ireland

#### Maximum and minimum funding available

€2k to €25k

#### Is this Specific to Renewable Energy businesses?

No

#### Is this a local, regional or national support?

National

---

### Credit Guarantee Scheme

#### Link to support information on website

<https://www.djei.ie/en/What-We-Do/Supports-for-SMEs/Access-to-Finance/SME-Credit-Guarantee-Scheme/>

#### Type of Finance Support

Loan Guarantee



**Description of the support**

This Government scheme enables the State, in certain circumstances, to act as a guarantor to the bank for your loan application. The purpose of the scheme is to guarantee commercially viable SMEs that have been declined credit due to inadequate collateral and/or lack of understanding of the business model.

**Agency Responsible for Support**

Department of Jobs, Enterprise and Innovation

**Maximum and minimum funding available**

The minimum permissible loan value is €10,000 and the maximum is €1 million per borrower. Each Scheme lender has the option to set their own higher minimum amounts or lower maximum amounts within these limits. For more information see <https://www.djei.ie/en/What-We-Do/Supports-for-SMEs/Access-to-Finance/SME-Credit-Guarantee-Scheme/>

**Is this Specific to Renewable Energy businesses?**

No

**Is this a local, regional or national support?**

National

---

**Strategic Banking Corporation of Ireland (SBCI) - Investment and Working Capital Loans****Link to support information on website**

<http://sbci.gov.ie/products/sbci-investment-working-capital-loan>

**Type of Finance Support**

Investment and working Capital Loans

**Description of the support**

The following product features are available through [the partner On-Lenders](#) with SBCI's support, subject to the financial institutions' own credit policies and procedures.

With SBCI providing low cost funding to eligible SMEs, these products will deliver the following benefits:

- Lower interest rates
- Available for both investment and working capital purposes
- Minimum loan maturity of 2 years
- Loan amounts up to €5m

In addition, subject to the financial institutions' credit policies and procedures, the following features may also be available to qualifying SMEs:

- Repayment schedule flexibility
- Loan maturity of up to 10 years
- Facility maturity tailored to correspond with investment life cycle

**Agency Responsible for Support**

Strategic Banking Corporation of Ireland

**Maximum and minimum funding available**

Loan amounts up to €5m

**Is this Specific to Renewable Energy businesses?**

No

**Is this a local, regional or national support?**

National

---

**Strategic Banking Corporation of Ireland (SBCI) - Refinance of Exiting Banks****Link to support information on website**<http://sbci.gov.ie/products/re-finance>**Type of Finance Support**

Loan- Refinance of Exiting Banks

**Description of the support**

This product aims to facilitate those SMEs whose current bank loan facilities originated with banks, which are exiting the Irish market. The following product features are available through [the partner On-Lenders](#) with SBCI's support, subject to the financial institutions' own credit policies and procedures.

- Available to eligible SMEs whose current facilities originated with a bank which is exiting or has exited the Irish market, i.e. ACC Bank, Danske Bank, Lloyds / Bank of Scotland Ireland, Irish Nationwide / IBRC, Anglo Irish Bank / IBRC.
- Lower interest rates
- Loan amounts up to €5m
- Minimum loan maturity of 2 years
- Loans may also cover investment and working capital purposes

**Agency Responsible for Support**

Strategic Banking Corporation of Ireland

**Maximum and minimum funding available**

Loan amounts up to €5m

**Is this Specific to Renewable Energy businesses?**

No

**Is this a local, regional or national support?**

National

---

**Strategic Banking Corporation of Ireland (SBCI) - Leasing and Hire Purchase****Link to support information on website**<http://sbci.gov.ie/products/leasing-and-hire-purchase>**Type of Finance Support**

Leasing and Hire Purchase

## Description of the support

SME leasing offers flexible asset finance funding solutions, including leasing and hire purchase (HP) that will allow SMEs finance assets including cars, commercial vehicles, plant and machinery.

Lease terms are usually between 2 to 5 years and provide the SME with fixed monthly rental payments for the term. In addition payments may be V.A.T. deductible where registered and where applicable.

## How does it work?

Leasing is an arrangement whereby the leasing company buys the assets your business needs and leases them to you over a given period (usually 2 – 5 years). In this way you are acquiring the use of the asset without putting your cash flow under extra pressure. At the end of the lease period you can either extend the lease or buy the asset outright (terms and conditions apply).

## Hire Purchase

Hire purchase is an agreement whereby fixed plant / equipment / vehicles are purchased by the leasing/HP Company on behalf of the customer and hired for an agreed term.

On completion of the term, ownership passes to the customer for a nominal sum.

## How does it work?

A hire purchase agreement is drawn up and signed by the hirer on behalf Leasing/HP Company.

Terms usually range from 2 – 5 years.

The asset may be purchased for a nominal amount at the end of the agreed term.

## Contract Hire Agreements (Vehicle Leasing)

Contract hire facilities to SMEs

- Rent/hire a vehicle for a set monthly payment over a fixed period
- Contract hire terms over 3 or 4 years
- Lower monthly payment than hire purchase or lease
- Monthly rental takes into account the estimated residual value at the end of the term so there is no requirement for the user to pay the entire capital cost
- contract hire agreements can include maintenance packages

## How does it work?

Contract hire is an arrangement whereby the leasing company buys the vehicles and in turn hires them out to SMEs over a term with an agreed residual value depending mainly on term, mileage / usage and resale value. The key benefits of contract hire are that the monthly payments are fixed, the maintenance contract is optional and there is lower initial outlay/deposit and no depreciation risk on the vehicle for the company.

## Rental Agreements (Vendor Finance)

Rental agreements are leasing facilities available for approved office equipment suppliers to enable SME's finance photocopiers, printers, telecommunication equipment and business equipment in general.

Leasing facilities for dental and specialised medical equipment is also available.

- Lease terms over 2 – 5 years
- Fixed monthly/quarterly rental
- Maintenance package available
- V.A.T. deductible where applicable

**How does it work?**

SMEs arrange finance via their own office equipment suppliers who act as intermediaries with the leasing company.

**Agency Responsible for Support**

Strategic Banking Corporation of Ireland

**Is this Specific to Renewable Energy businesses?**

No

**Is this a local, regional or national support?**

National

---

**Seed & Venture Capital Programme****Link to support information on website**

<http://www.enterprise-ireland.com/en/Invest-in-Emerging-Companies/Seed-and-Venture-Capital-Scheme/>

**Type of Finance Support**

Equity (seed and VC)

**Description of the support**

The 2013-2018 Seed & VC Scheme improves access to finance for SMEs and to further develop the Seed & VC industry in Ireland

**Agency Responsible for Support**

Enterprise Ireland [www.enterprise-ireland.com](http://www.enterprise-ireland.com)

**Is this Specific to Renewable Energy businesses?**

No

**Is this a local, regional or national support?**

National

**Other useful/relevant information**

Available for Startups

---

**Competitive Start Fund****Link to support information on website**

<http://www.enterprise-ireland.com/en/funding-supports/company/hpsu-funding/competitive-start-fund-csf.html>

**Type of Finance Support**

Grant/Fund

**Description of the support**

This fund works to accelerate the growth of start-up companies that have the capability to succeed in global markets.

The purpose of the Competitive Start Fund is to accelerate the growth of start-up companies that have the capability to succeed in global markets. The fund is designed to enable those companies reach key commercial and technical milestones, for example:

- Evaluate overseas market opportunities and reach firm conclusions regarding the viability of the proposed business.
- Build a prototype.
- Secure a reference site.
- Develop a market entry plan for exploiting international opportunities.
- Secure partnership deal or strategic alliance.
- Identify suitable channels to international markets.
- Secure third party investment e.g. business angel, Venture Capital.

All applications to the Competitive Start Fund must be made via the Enterprise Ireland online application system during call open dates.

### Agency Responsible for Support

Enterprise Ireland [www.enterpriseireland.com](http://www.enterpriseireland.com)

### Is this Specific to Renewable Energy businesses?

No

### Is this a local, regional or national support?

National

---

## Priming grants

### Link to support information on website

<https://www.localenterprise.ie/Discover-Business-Supports/Financial-Supports/Priming-Grant/>

### Type of Finance Support

Grant

### Description of the support

Priming grants

<https://www.localenterprise.ie/Discover-Business-Supports/Financial-Supports/Priming-Grant/>

These grants are for sole traders, partnerships, community or limited companies to develop their businesses. Finance is subject to eligibility criteria which you will need to discuss further with your local LEO Office.

### Agency Responsible for Support

Local Enterprise Office (LEO) [www.localenterprise.ie](http://www.localenterprise.ie)

<https://www.localenterprise.ie/Find-Your-Local-Enterprise-Office/>

### Maximum and minimum funding available

n/a

### Is this Specific to Renewable Energy businesses?

No

**Is this a local, regional or national support?**

Administered locally but available countywide

---

**Business Expansion Grant****Link to support information on website**

<https://www.localenterprise.ie/Discover-Business-Supports/Financial-Supports/Business-Expansion-Grant/>

**Type of Finance Support**

Grants and loans

**Description of the support**

Business Expansion Grant

<https://www.localenterprise.ie/Discover-Business-Supports/Financial-Supports/Business-Expansion-Grant/>

This grant is to help support domestically traded manufacturing and service businesses with the potential to trade internationally.

**Agency Responsible for Support**

Local enterprise office

<https://www.localenterprise.ie/Find-Your-Local-Enterprise-Office/>

**Maximum and minimum funding available**

n/a

**Is this Specific to Renewable Energy businesses?**

No

**Is this a local, regional or national support?**

Administered locally but available countywide

---

**Feasibility/Innovation Grant****Link to support information on website**

<https://www.localenterprise.ie/Discover-Business-Supports/Financial-Supports/Feasibility-Grant/>

**Type of Finance Support**

Grants and loans

**Description of the support**

Feasibility/Innovation Grant

<https://www.localenterprise.ie/Discover-Business-Supports/Financial-Supports/Feasibility-Grant/>

These grants are designed to assist with researching market demand for a product or service and examining its sustainability.

**Agency Responsible for Support**

Local enterprise office

<https://www.localenterprise.ie/Find-Your-Local-Enterprise-Office/>

### Maximum and minimum funding available

n/a

### Is this Specific to Renewable Energy businesses?

No

### Is this a local, regional or national support?

Administered locally but available countywide

---

## Microfinance LEO Loans

### Link to support information on website

<http://www.localenterprise.ie/Discover-Business-Supports/Financial-Supports/Microfinance-Loans/>

### Type of Finance Support

Loan

### Description of the support

Microfinance LEO Loans

<http://www.localenterprise.ie/Discover-Business-Supports/Financial-Supports/Microfinance-Loans/>

Loans are provided from €2,000 up to €25,000, from 3 to 5 years, with flexibility on repayment terms and a reduced interest rate for LEO clients.

### Agency Responsible for Support

Local enterprise office

<https://www.localenterprise.ie/Find-Your-Local-Enterprise-Office/>

### Maximum and minimum funding available

€2,000 to €25,000

### Is this Specific to Renewable Energy businesses?

No

### Is this a local, regional or national support?

Administered locally but available countywide

---

## REFIT Schemes and Supports

### Link to support information on website

<http://www.dccae.gov.ie/energy/en-ie/Renewable-Energy/Pages/Refit-Schemes-Landing-Page.aspx>

### Type of Support

Feed in Tariff

### Description of the support


The Renewable Energy Feed in Tariff (REFIT) schemes/supports are funded by the Public Service Obligation (PSO) which is paid for by all electricity consumers. The REFIT schemes have been designed to incentivise the

development of renewable electricity generation in order to ensure Ireland meets its goal of 40% of electricity coming from renewable sources by 2020.

More information on the REFIT Schemes  [Frequently Asked Questions \(PDF 0.3MB\)](#)

## Reference

## Prices

Section 5.2 of the Terms and Conditions of the three REFIT schemes provide for adjustments to reference prices by way of annual indexation using the annual percentage change in the Consumer Price Index as quoted by the Central Statistics Office, which you can find on their [website](#). More information on  [reference prices \(PDF 0.2MB\)](#) for 2015, in euro per megawatt hour.

More information on  [2016 reference prices \(PDF 0.2MB\)](#) for REFIT

## REFIT 1

Renewable Energy Feed in Tariff (REFIT) 1, was the original REFIT Scheme, which was open for application until 31 December 2009

[See more information on REFIT 1](#)

## REFIT 2

Renewable Energy Feed in Tariff (REFIT) 2 came into operation in March 2012

[See more information on REFIT 2](#)

## REFIT 3

Renewable Energy Feed in Tariff (REFIT) 3 was designed to incentivise the addition of 310MW of bioenergy capacity to the Irish Grid.

[See more information on REFIT 3](#)

## Agency Responsible for Support

Department of Communications, Climate Action and Environment <http://www.dccae.gov.ie/>

## Is this Specific to Renewable Energy businesses?

Yes

## Is this a local, regional or national support?

National

## Other useful/relevant information

The current REFIT schemes are now closed as of 31 December 2015. The Department will no longer accept applications



## New Renewable Electricity Support Schemes

The Department of Communications, Energy and Natural Resources is developing a new support scheme for renewable electricity.

### [More on the new support scheme](#)

Further information on the new schemes will be available on the GREBE Supports tool

---

## Competitive Feasibility Fund

### Link to support information on website

[http://www.enterprise-ireland.com/EI\\_Corporate/en/funding-supports/Company/HPSU-Funding/Competitive-Feasibility-Fund-CFF-.html](http://www.enterprise-ireland.com/EI_Corporate/en/funding-supports/Company/HPSU-Funding/Competitive-Feasibility-Fund-CFF-.html)

### Type of Finance Support

Grant/ competitive

### Description of the support

This is a fund to assist a new start up company or individual entrepreneur to investigate the viability of a new significant growth orientated business.

### Agency Responsible for Support

Enterprise Ireland [www.enterpriseireland.com](http://www.enterpriseireland.com)

### Is this Specific to Renewable Energy businesses?

No

### Is this a local, regional or national support?

National

---

## Western Investment Fund for SMEs

### Link to support information on website

<http://www.wdc.ie/wdc-investment-fund/>

### Type of Finance Support

Loans and equity

### Description of the support

This Investment Fund provides loans and equity to high growth enterprises. It has already funded projects in areas such as bio ICT, medical devices, ICT, high tech manufacturing, food and tourism.

### Agency Responsible for Support

Western Development Commission [www.wdc.ie](http://www.wdc.ie)

### Is this Specific to Renewable Energy businesses?

No

### Is this a local, regional or national support?

Regional- operated by a regional development agency

---

## Business Angel Finance

### Link to support information on website

<http://www.intertradeireland.com/equity-old/businessangelfinance/>

[www.hban.org](http://www.hban.org)

### Type of Finance Support

Equity investment

### Description of the support

Through Business Angel Finance, high net worth individuals or syndicates invest up to €1 million for usually between 3 and 7 years in return for equity stake in your business.

### Agency Responsible for Support

Intertrade Ireland [www.intertradeireland.com](http://www.intertradeireland.com)

### Maximum and minimum funding available

Up to €1m

### Is this Specific to Renewable Energy businesses?

No

### Is this a local, regional or national support?

Regional/cross border

---

## Innovative HPSU Fund (Equity)

### Link to support information on website

<http://www.enterpriseireland.ie/en/Funding-Supports/Company/HPSU-Funding/Innovative-HPSU-fund.html>

### Type of Finance Support

Equity

### Description of the support

Enterprise Ireland offers equity investment to high potential start-up (HPSU) clients, on a co-funded basis to support the implementation of company business plans.

### Agency Responsible for Support

Enterprise Ireland [www.enterpriseireland.com](http://www.enterpriseireland.com)

### Is this Specific to Renewable Energy businesses?

No

### Is this a local, regional or national support?

National

### Other useful/relevant information

Start Up

---

## Taxation or welfare supports or concessions for businesses

### Startup Relief for Entrepreneurs (SURE)

#### Link to support information on website

<http://www.revenue.ie/en/tax/it/leaflets/it15.html>

#### Type of Taxation or Welfare Support

Tax relief

#### Description of the support

Startup Refunds for Entrepreneurs (SURE) is a tax relief incentive scheme. If you are interested in starting your own company, you may be entitled to an income tax refund of up to 41% of the capital that you invest.

<http://www.revenue.ie/en/tax/it/leaflets/it15.html>

#### Agency Responsible for Support

Revenue Commissioners

<http://www.revenue.ie/en/business/running/initiatives-smes.html>

#### Maximum and minimum funding available

n/a

#### Is this Specific to Renewable Energy businesses?

No

#### Is this a local, regional or national support?

National

---

### Employment and Investment Scheme

#### Link to support information on website

<http://www.revenue.ie/en/tax/it/leaflets/it55.html>

#### Type of Taxation or Welfare Support

Tax relief

#### Description of the support

The Employment and Investment Incentive Scheme offers investors up to 41% tax relief on their total income in return for investing in new ordinary shares in qualifying SMEs for a three year investment period

<http://www.revenue.ie/en/tax/it/leaflets/it55.html>

#### Agency Responsible for Support

Revenue Commissioners

<http://www.revenue.ie/en/business/running/initiatives-smes.html>

#### Maximum and minimum funding available

n/a

**Is this Specific to Renewable Energy businesses?**

No

**Is this a local, regional or national support?**

National

---

**Tax Relief for new start-up companies****Link to support information on website**

<http://www.revenue.ie/en/practitioner/tax-briefing/2013/no-022013.html>

**Type of Taxation or Welfare Support**

Tax relief

**Description of the support**

A tax relief from Corporation Tax can be available for new start-up companies who have a corporate tax liability of less than €40,000, subject to certain conditions being met.

<http://www.revenue.ie/en/practitioner/tax-briefing/2013/no-022013.html>

**Agency Responsible for Support**

Revenue Commissioners

<http://www.revenue.ie/en/business/running/initiatives-smes.html>

**Maximum and minimum funding available**

n/a

**Is this Specific to Renewable Energy businesses?**

No

**Is this a local, regional or national support?**

National

---

**Research & Development Tax Credits****Link to support information on website**

<http://www.revenue.ie/en/tax/ct/research-development.html>

**Type of Taxation or Welfare Support**

Tax relief

**Description of the support**

A tax relief from Corporation Tax can be available for companies engaged in high value add Research & Development ('R&D') activities. The R&D Tax Credit gives a company a 25% tax credit for their expenditure on qualifying R&D in a given year.

<http://www.revenue.ie/en/tax/ct/research-development.html>

**Agency Responsible for Support**

Revenue Commissioners

<http://www.revenue.ie/en/business/running/initiatives-smes.html>

### Maximum and minimum funding available

n/a

### Is this Specific to Renewable Energy businesses?

No

### Is this a local, regional or national support?

National

---

## VAT measures to reduce burden on SMEs

### Link to support information on website

<http://www.revenue.ie/en/tax/vat/index.html>

<http://www.revenue.ie/en/business/running/initiatives-smes.html>

### Type of Taxation or Welfare Support

VAT measures

### Description of the support

A number of VAT measures facilitate small businesses including a) increasing the cash accounting threshold to €2m, b) retaining the 9% VAT rate, c) non-registration or reduced VAT filing for businesses with low turnover. These measures aim to assist cash flow, reduce administrative burden and encourage employment.

<http://www.revenue.ie/en/tax/vat/index.html>

### Agency Responsible for Support

Revenue Commissioners

<http://www.revenue.ie/en/business/running/initiatives-smes.html>

### Is this Specific to Renewable Energy businesses?

No

### Is this a local, regional or national support?

National

---

## The Back to Work Enterprise Allowance (BTWEA) scheme

### Link to support information on website

<http://www.welfare.ie/en/Pages/Back-to-Work-Enterprise-Allowance-Self-Employed.aspx>

[www.welfare.ie/en/downloads/sw92.pdf](http://www.welfare.ie/en/downloads/sw92.pdf)

### Type of Taxation or Welfare Support

Social Welfare Support

### Description of the support

Allows those embarking on self employment to retain some existing welfare benefits while setting up a new business. If you are getting certain social welfare payments and you would like to become self-employed, the

Back to Work Enterprise Allowance (BTWEA) allows you to keep a portion of your social welfare payment for 2 years.

**Agency Responsible for Support**

Department of Social Protection

<http://www.welfare.ie>

**Is this Specific to Renewable Energy businesses?**

No

**Is this a local, regional or national support?**

National

---

**JobBridge, the National Internship Scheme****Link to support information on website**

[www.jobbridge.ie](http://www.jobbridge.ie)

**Type of Taxation or Welfare Support**

Welfare Support

**Description of the support**

JobBridge provides work experience placements for interns for a 6 or 9 month period. Interns will receive an allowance of €50 per week on top of their existing social welfare entitlement. This will be payable for the period of the internship by the Department of Social Protection. There is no cost to an employer in providing this internship as the Department would continue to pay the person their social welfare payment plus a weekly top-up of €50 while on the internship

**Agency Responsible for Support**

The scheme is administered by Solas/FAS on behalf of the Dept. of Social Protection.

**Is this Specific to Renewable Energy businesses?**

No

**Is this a local, regional or national support?**

National

---

**JobsPlus****Link to support information on website**

[www.jobsplus.ie](http://www.jobsplus.ie)

**Type of Taxation or Welfare Support**

Welfare Support

**Description of the support**

JobsPlus is an employer incentive which encourages and rewards employers who offer employment opportunities to jobseekers on the Live Register. JobsPlus is a simple scheme for employers to access, offering up to €10,000 for a qualifying recruit, payable on a monthly basis over a two year period. The employment you provide must be for at least 30 hours per week and must span a minimum of 4 days in each week

**Agency Responsible for Support**

Department of Social Protection

**Maximum and minimum funding available**

Max €10,000

**Is this Specific to Renewable Energy businesses?**

No

**Is this a local, regional or national support?**

National

---

Soft supports e.g. mentoring, training, specialist advice, networks

**Accelerate Management Development Programme****Link to support information on website**

<https://www.localenterprise.ie/Discover-Business-Supports/Training-Programmes/Start-Your-Own-Business-Programme/>

**Description of the support**

This programme provides business owners/managers with the management, leadership, business skills and knowledge to achieve sustainability and growth in their business.

**Agency Responsible for Support**

Local enterprise office

<https://www.localenterprise.ie/Find-Your-Local-Enterprise-Office/>

**Is this Specific to Renewable Energy businesses?**

No

**Is this a local, regional or national support?**

Administered locally but available countywide

---

**Access to EU Programmes, EU Finance and EU Markets****Link to support information on website**

<http://www.een-ireland.ie/>

**Type of Support**

Advice

**Description of the support**

The Enterprise Europe Network assists SMEs who are looking for EU Programmes and Supports. The Network organises international brokerage events and provides a central database for SMEs to offer, or search for, business opportunities, technology transfer and licensing deals in the EU and in many other countries.

**Agency Responsible for Support**

Enterprise Ireland [www.enterpriseireland.com](http://www.enterpriseireland.com)

**Is this Specific to Renewable Energy businesses?**

No

**Is this a local, regional or national support?**

National

---

**Horizon 2020 Supports****Link to support information on website**

<http://www.intertradeireland.com/horizon2020/>

**Type of Support**

Advice

**Description of the support**

Aimed at helping companies and researchers from Ireland and Northern Ireland collaborate in Horizon 2020. InterTrade Ireland offers a suite of supports and vouchers specifically designed to facilitate this North South collaboration and to increase participation in the Horizon 2020 funding scheme.

**Agency Responsible for Support**

Intertrade Ireland [www.intertradeireland.com](http://www.intertradeireland.com)

**Maximum and minimum funding available**

n/a

**Is this Specific to Renewable Energy businesses?**

No

**Is this a local, regional or national support?**

Regional/cross border

---

**New Frontiers Entrepreneur Development Programme****Link to support information on website**

<http://www.enterprise-ireland.com/en/Start-a-Business-in-Ireland/Supports-for-High-Potential-Start-Ups/New-Frontiers-Entrepreneur-Development-Programme.html>

**Type of Support**

Entrepreneur/personal development

**Description of the support**

This is a national Incubation programme that offers successful applications a package of supports to help accelerate business growth and equip individual with the skills to start and grow their company.

**Agency Responsible for Support**

Enterprise Ireland [www.enterpriseireland.com](http://www.enterpriseireland.com)

**Maximum and minimum funding available**

n/a



**Is this Specific to Renewable Energy businesses?**

No

**Is this a local, regional or national support?**

National

---

**Training Networks Programme (TNP)****Link to support information on website**

<http://www.skillnets.ie/training-networks>

<http://www.skillnets.ie/companies>

**Type of Support**

Training

**Description of the support**

Join a Skillnets training network to benefit from high quality training that is subsidised, relevant to your needs, and delivered at a time and in a location that suits your business.

**Agency Responsible for Support**

Skillnets

[www.skillnets.ie](http://www.skillnets.ie)

**Maximum and minimum funding available**

n/a

**Is this Specific to Renewable Energy businesses?**

No, but there could be an RE network

**Is this a local, regional or national support?**

Regional/ Local

---

**Management Works Programme****Link to support information on website**

<http://www.managementworks.ie>

**Type of Support**

Training and mentoring

**Description of the support**

Subsidised management development training and mentoring programme available to businesses in all sectors to assist them to grow in terms of their sales, output and employment.

**Agency Responsible for Support**

Skillnets

<http://www.managementworks.ie>

[www.skillnets.ie](http://www.skillnets.ie)

**Maximum and minimum funding available**

n/a

**Is this Specific to Renewable Energy businesses?**

No

**Is this a local, regional or national support?**

National

---

**Trade Accelerator Vouchers****Link to support information on website**

<http://www.intertradeireland.com/businessfundingservices/fundingandprogrammeinformation/tradeacceleratorvouchers/>

**Type of Support**

Vouchers for business services and market research

**Description of the support**

These vouchers provide financial support towards professional advice such as financial and legal. These vouchers can also be used for market research to scope potential business in opposite jurisdiction.

**Agency Responsible for Support**Intertrade Ireland [www.intertradeireland.com](http://www.intertradeireland.com)**Is this Specific to Renewable Energy businesses?**

No

**Is this a local, regional or national support?**

Regional/cross border

---

**Start Your Own Business Programme****Link to support information on website**

<https://www.localenterprise.ie/Discover-Business-Supports/Training-Programmes/Start-Your-Own-Business-Programme/>

**Type of Support**

Training and advice

**Description of the support**

This programme is for people who have a business idea and want to assess its viability and decide whether to proceed.

**Agency Responsible for Support**Local enterprise offices [www.localenterprise.ie](http://www.localenterprise.ie)**Maximum and minimum funding available**

n/a

**Is this Specific to Renewable Energy businesses?**

No

**Is this a local, regional or national support?**

Administered locally but available all over the country

---

**Accelerate Management Development Programme****Link to support information on website**

<https://www.localenterprise.ie/Discover-Business-Supports/Training-Programmes/Start-Your-Own-Business-Programme/>

**Type of Support**

Training and advice

**Description of the support**

This programme provides business owners/managers with the management, leadership, business skills and knowledge to achieve sustainability and growth in their business.

**Agency Responsible for Support**

Local enterprise offices [www.localenterprise.ie](http://www.localenterprise.ie)

**Maximum and minimum funding available**

n/a

**Is this Specific to Renewable Energy businesses?**

No

**Is this a local, regional or national support?**

Administered locally but available all over the country

---

**Tendering Supports****Link to support information on website**

<http://www.intertradeireland.com/tendersuccessfully/>

[www.intertradeireland.com/go-2-tender/contactgo-2-tender/](http://www.intertradeireland.com/go-2-tender/contactgo-2-tender/)

**Type of Support**

Advice and training

**Description of the support**

Aimed at helping companies gain the necessary knowledge and practical skills to tender successfully for public sector contracts particularly on a cross border basis. These include 2 day workshops (Go2Tender), Meet the Buyer Events and supports for collaborative bidding.

**Agency Responsible for Support**

Intertrade Ireland [www.intertradeireland.com](http://www.intertradeireland.com)

**Is this Specific to Renewable Energy businesses?**

No

**Is this a local, regional or national support?**

Regional/cross border

---

## HPSU Feasibility Study Grant

### Link to support information on website

<http://www.enterpriseireland.ie/en/Funding-Supports/Company/HPSU-Funding/HPSU-Feasibility-Study-Grant-.html>

### Type of Support

Study Grant

### Description of the support

This Study Grant assists a new start-up company or individual entrepreneur to investigate the viability of a new export orientated business or proposition.

### Agency Responsible for Support

Enterprise Ireland [www.enterpriseireland.com](http://www.enterpriseireland.com)

### Is this Specific to Renewable Energy businesses?

No

### Is this a local, regional or national support?

National

### Other useful/relevant information

Start Up

---

## SEAI Energy Advice and Mentoring

### Link to support information on website

[http://www.seai.ie/Your\\_Business/Energy\\_Advice\\_Mentoring](http://www.seai.ie/Your_Business/Energy_Advice_Mentoring)

### Type of Support

Advice and Mentoring

### Description of the support

SEAI provides free, one-to-one advice and mentoring to private-sector SMEs from one of our specialist energy advisors. These advisors help and motivate SMEs to assess their own energy use, to identify opportunities for savings and to take action to realise these savings.

### Agency Responsible for Support

Sustainable Energy Authority of Ireland (SEAI)

[www.seai.ie](http://www.seai.ie)

### Is this Specific to Renewable Energy businesses?

No

### Is this a local, regional or national support?

National

### Other useful/relevant information

Start Up

---

## SME Support Tool

### Link to support information on website

<http://www.supportingsmes.ie/businessdetails.aspx>

### Type of Support

Information on supports available for SMEs

### Description of the support

Visit the SME support Tool to see what supports are available to help a business to grow.

There are over 80 government supports available to Irish Start Ups and small Businesses. The online tool will quickly help highlight relevant, available supports.

### Agency Responsible for Support

Department of Jobs Enterprise and Innovation

<https://www.djei.ie/en/>

Action Plan for Jobs <http://www.actionplanforjobs.ie/>

### Is this Specific to Renewable Energy businesses?

No

### Is this a local, regional or national support?

National

### Other useful/relevant information

For Start Ups and SMEs

---

## Research and Development supports

### Ocean Energy Prototype Development Fund

#### Link to support information on website

<http://www.seai.ie/Renewables/Ocean-Energy/Prototype-Development-Fund/>

#### Type of R&D Support

Funding

#### Description of the support

The main focus of the Prototype Development Fund programme is to stimulate the development and deployment of Ocean Energy (OE) devices and systems. As such, the emphasis is on industry-led projects for the following types of activities:

- Industry-led projects to develop and test wave and tidal energy capture devices and systems;
- Independent monitoring of projects and technologies
- Industry-led research and development (R&D) aimed at the integration of ocean energy into the electricity market and the national electricity grid (and network);
- Data monitoring, forecasting, communications and control of OE systems;

- Specific industry-led research projects which will be carried out by research centres, third level institutions and centres of excellence with a high level of expertise in the relevant area

**Agency Responsible for Support**

Sustainable Energy Authority of Ireland

Maximum and minimum funding available

Amount available varies, see details here:

<http://www.seai.ie/Renewables/Ocean-Energy/Prototype-Development-Fund/SEAI-Ocean-R-D-Call-2015.pdf>

**Is this Specific to Renewable Energy businesses?**

Yes

**Is this a local, regional or national support?**

National

**Other useful/relevant information**

SEAI is a member of OCEANERA-NET, a network of 16 national and regional funders and managers of research and innovation programmes, from 9 European Countries. The objective of OCEANERA-NET is to coordinate funding programmes between European countries and regions to support research and innovation in the ocean energy sector.

OCEANERA-NET will work towards joint calls for collaborative research and innovation projects. The Second Joint Call is now open! For more information see the OCEANERA-NET website: <http://www.oceaneranet.eu/>

---

**Innovation Voucher for start-up companies****Link to support information on website**

<http://www.enterprise-ireland.com/en/Funding-Supports/Company/HPSU-Funding/Innovation-Voucher.html>

**Type of R&D Support**

Voucher

**Description of the support**

This voucher provides funding towards collaborating with registered college or knowledge provider to explore a business opportunity or technical problem.

**Agency Responsible for Support**

Enterprise Ireland

**Is this Specific to Renewable Energy businesses?**

No- but might be particularly useful to them

**Is this a local, regional or national support?**

National

**Other useful/relevant information**

Start Up only

---

## Innovation Partnership Grant Programme

### Link to support information on website

[http://www.enterpriseireland.ie/EI\\_Corporate/en/Research-Innovation/Companies/IPP-Brochure.pdf](http://www.enterpriseireland.ie/EI_Corporate/en/Research-Innovation/Companies/IPP-Brochure.pdf)

### Type of R&D Support

Research grant

### Description of the support

This Programme provides financial support to companies who engage in collaborative research projects with Irish universities or Institutes of Technology (IOTs).

### Agency Responsible for Support

Enterprise Ireland [www.enterpriseireland.com](http://www.enterpriseireland.com)

### Is this Specific to Renewable Energy businesses?

No

### Is this a local, regional or national support?

National

---

## Employment Supports

### EURES

### Link to support information on website

[http://www.welfare.ie/en/Pages/European-Recruitment-Service-\(EURES\)\\_holder.aspx](http://www.welfare.ie/en/Pages/European-Recruitment-Service-(EURES)_holder.aspx)

### Type of Support

Recruitment support

### Description of the support

The European Employment Services (EURES) team can help employers who have difficulty recruiting staff in Ireland or who wish to broaden their skill base with access to jobseekers in other EU and EEA countries.

### Agency Responsible for Support

European Employment Services; Department of Social Protection

### Is this Specific to Renewable Energy businesses?

No

### Is this a local, regional or national support?

National

### Other useful/relevant information

Available in other partner regions? (all? Some?)

---

## The EmployAbility Service

### Link to support information on website

<http://www.welfare.ie/en/Pages/List-of-Employability-Organisations.aspx>

### Type of Support

Supports for employment of people with disabilities

### Description of the support

The nationwide EmployAbility Service provides an employment support service for people with a health condition, injury, illness or disability and a recruitment advice service for the business community.

<http://www.welfare.ie/en/Pages/List-of-Employability-Organisations.aspx>

### Agency Responsible for Support

Department of Social Protection [www.welfare.ie](http://www.welfare.ie)

### Is this Specific to Renewable Energy businesses?

No

### Is this a local, regional or national support?

National

---

## The Wage Subsidy Scheme

### Link to support information on website

[http://www.welfare.ie/en/Pages/Wage-Subsidy-Scheme\\_holder\\_3176.aspx](http://www.welfare.ie/en/Pages/Wage-Subsidy-Scheme_holder_3176.aspx)

### Type of Support

Supports for employment of people with disabilities

### Description of the support

The Wage Subsidy Scheme provides financial incentives to employers to employ disabled people who work more than 20 hours per week.

[http://www.welfare.ie/en/Pages/Wage-Subsidy-Scheme\\_holder\\_3176.aspx](http://www.welfare.ie/en/Pages/Wage-Subsidy-Scheme_holder_3176.aspx)

### Agency Responsible for Support

Department of Social Protection [www.welfare.ie](http://www.welfare.ie)

### Is this Specific to Renewable Energy businesses?

No

### Is this a local, regional or national support?

National

---



## Work Place Supports

### Link to support information on website

[http://www.welfare.ie/en/Pages/Workplace-Supports\\_holder.aspx](http://www.welfare.ie/en/Pages/Workplace-Supports_holder.aspx)

### Type of Support

Supports for employment of people with disabilities

### Description of the support

A number of practical supports and allowances are available to companies to proactively assist the participation of people with a disability in the workforce. There are schemes available to support companies to employ someone with a disability, or to retain an employee who has acquired an impairment or illness

[http://www.welfare.ie/en/Pages/Workplace-Supports\\_holder.aspx](http://www.welfare.ie/en/Pages/Workplace-Supports_holder.aspx)

### Agency Responsible for Support

Department of Social Protection [www.welfare.ie](http://www.welfare.ie)

### Is this Specific to Renewable Energy businesses?

No

### Is this a local, regional or national support?

National

---

Other- e.g. Incubation space or office space

## Enterprise Space / Incubation space

### Link to support information on website

<http://www.westbic.ie>

<http://www.gtc.ie/>

<http://www.fiontarlann.com>

### Type of Support

Incubation/office space

### Description of the support

Three examples are given:

The GTC provides a dynamic office space with business support services in a connected network of entrepreneurs, high growth companies, investors and support agencies. <http://www.gtc.ie/>

Fiontarlann is a 6100 sq ft Incubation and Enterprise Centre in Donegal providing office space with business support services in a connected network of entrepreneurs, high growth companies, investors and support agencies.

<http://www.fiontarlann.com>

WestBIC Roscommon region provides hotdesking / office space with business support services in a connected network of entrepreneurs, with business support. <http://www.westbic.ie>

**Agency Responsible for Support**

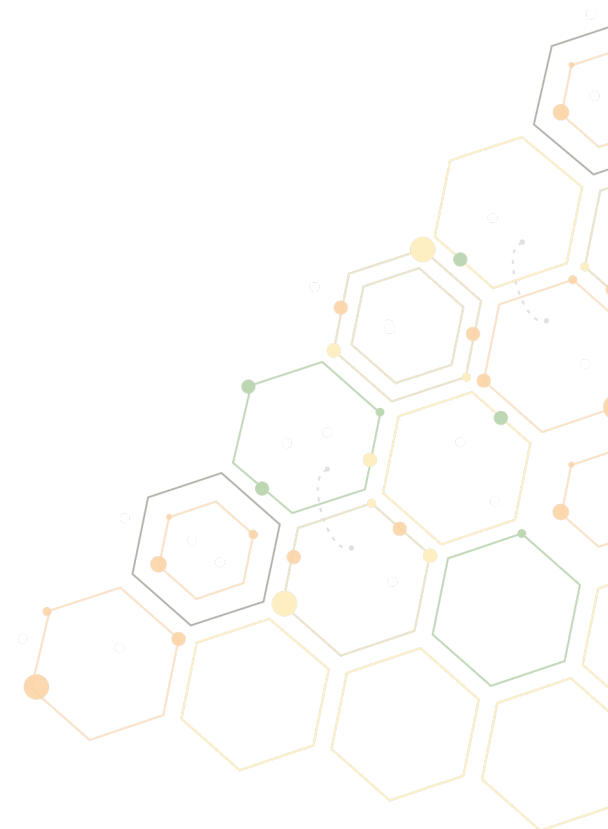
WestBIC (Business Innovation Centre) <http://www.westbic.ie>

**Is this Specific to Renewable Energy businesses?**

No

**Is this a local, regional or national support?**

Local/regional



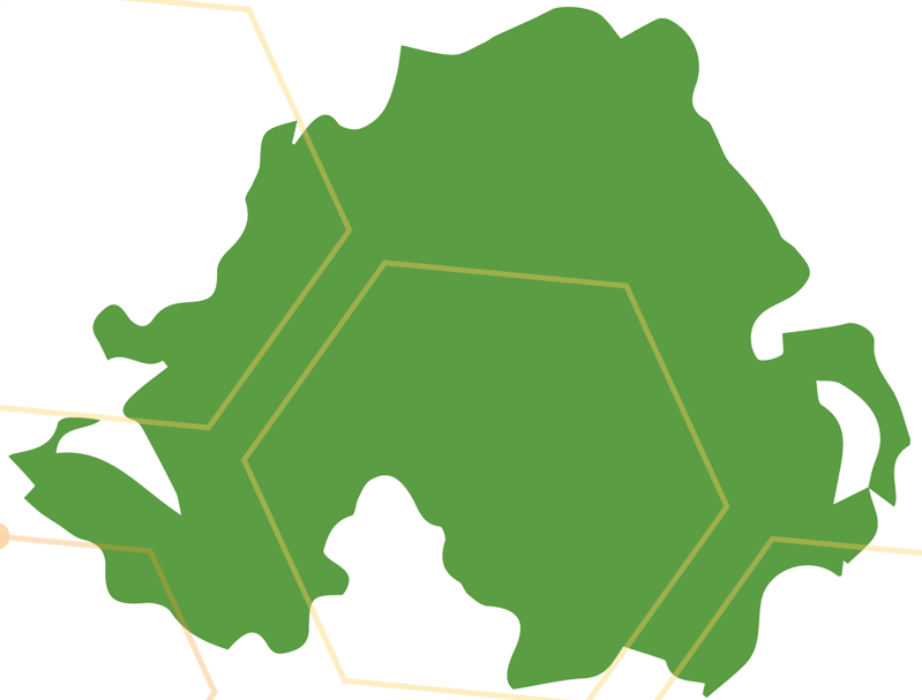


# GREBE

Generating Renewable Energy  
Business Enterprise

[www.grebeproject.eu](http://www.grebeproject.eu)

## Northern Ireland



Northern Periphery and  
Arctic Programme  
2014-2020





## Northern Ireland

### What kind of agencies offer support to SMEs?

In Northern Ireland there are 2 main agencies which offer support to SME's

Invest NI Invest will support many types of business; however they are very interested in businesses linked to improving the environment. Created a suite of six funds totalling more than £170 million to help SMEs with high growth potential, to forge ahead.

The start-up financial support is generally limited to businesses that intend to sell outside Northern Ireland.

Innovation Vouchers offers up to £5000 to 'purchase' specialist knowledge from one of 39 respected universities, colleges and research organisations throughout Northern Ireland and the Republic of Ireland. This knowledge can help you to expand, improve or create new products, services and processes.

### Is there one agency which is the first place for businesses to go?

Invest NI is the main agency in Northern Ireland, for all sizes of business to achieve the support that they require to help grow their business. Invest NI specialise in wide range of businesses and will give you support in the following areas: develop strategy, improve skills, operate more efficiency, find funding and new markets.

Invest NI advertise across all of Northern Ireland via social media, newspapers, posters and they also hold seminars to encourage business to get involved. With their publicity and advertisement they can be easily contacted and will arrange to meet with you to discuss your business development within 2-3 weeks.

<https://www.investni.com/>

### Are business supports restricted to certain types of business, or enhanced for certain types of SMEs (e.g. only available for manufacturing or for exporters)?

Invest NI support aerospace and defence, business services, construction, creative industries, financial services, food and drink, ICT and electronics, legal services, life and health sciences and materials handling, renewables and energy, security and tourism. There are a limited number of areas in which they have no real level of support e.g. retail – although they will support on line selling.

### Are there special supports for RE businesses?

Representatives of renewables in NI, giving advice on renewable energy sector. Provides the companies it represents with knowledge and advice on marine and wind renewable energy projects/ ideas. It has well developed sub groups which are capable of dealing any of these areas:

- Planning & environment
- Markets
- Grid
- Marine energy

Tech start up work to help companies win customers, make key hires, and develop strategies and tactics to achieve the fastest possible growth in the value of the company.

Seek to be trusted peers and partners to help entrepreneurs realise their vision with experienced and timely support. With their backing, Founders can focus on customer development and validating their business model.

<http://www.techstartni.com/>

Business supports available in Northern Ireland are described in more detail in the coming pages under the following themes:

- Financial Support (grants, loans, equity investment)
- Taxation or welfare supports or concessions for businesses
- Soft supports e.g. mentoring, training, specialist advice, networks
- Research and Development supports
- Social and Community supports (focused on not for profit)
- Other- e.g. Incubation space or office space

---

## Financial Support (grants, loans, equity investment)

### Invest NI

#### Link to support information on website

<https://www.investni.com/>

#### Type of Finance Support

- Grant Aid
- Mentoring support
- Staff subsidies
- Overseas Trade support

#### Description of the support

Invest NI approach to supporting businesses is based on three key elements:

- Providing information and advice, directly and through a range of information services.
- Providing support to people wanting to set up their own business and helping new and existing businesses grow and move into new markets.
- Providing tailored support to businesses that can make the greatest contribution to increasing productivity, innovation and export growth in Northern Ireland.

Because their resources are limited they primarily support those businesses that can make the biggest contribution to the economy.

Criteria typically used to determine whether a business can become an Invest NI client includes: Turnover exceeding £250K annually with over 25% being classed as export sales.

If a business based in Northern Ireland can show that it intends to sell outside Northern Ireland, is actively pursuing growth plans and will contribute to increasing productivity and innovation in Northern Ireland, you could become an Account Managed customer with Invest NI.

Detailed financial plans for three to five years will be needed to become an Invest NI Client along with full current accounts.

Once classed as an Invest NI Client you have access to a number of supports including;

- Access to wide range of expertise particular in export trade, IT, Innovation and sustainability.
- Grant Aid for staffing (specific roles including sales and IT roles)
- Grant Aid for ecommerce websites and online sales – typically 75%
- Grant Aid to travelling to Trade Shows and meeting with export customers.

- Branding and Design programmes
- Innovation support from Intellectual Property and patents and product development.
- Mentoring programmes in the area of sales, finances etc.
- Research and development teams and associate grant aid.
- Market research with a full business research library located through Business Information Services.

### **Agency Responsible for Support**

Range of Invest NI offices across Northern Ireland with a number of Client Executives dealing with businesses and specialist staff based primarily in Belfast.

### **Maximum and minimum funding available**

A suite of six funds totalling more than £170 million to help SMEs with high growth potential, like yours, to forge ahead.

Funding typically is set at 75% of the needed cost dependant on the area of support.

### **Is this Specific to Renewable Energy businesses?**

No Invest NI will support all types of business; however they are very interested in businesses linked to improving the environment.

### **Is this a local, regional or national support?**

The start-up financial support is generally limited to businesses that intend to sell outside Northern Ireland.

### **Other useful/relevant information**

Their Invest Growth Proof of Concept Fund provides grants to individuals, start-up businesses, micro enterprises and small or medium sized businesses to help them fully develop and test their ideas.

Invest NI also have a Proof of Concept programme that offers funding to local universities and research organisations to help researchers take their ideas out of the lab and into the market.

---

## **Intertrade Ireland**

### **Link to support information on website**

[www.intertradeireland.com](http://www.intertradeireland.com)

### **Type of Finance Support**

- Grant Aid
- Mentoring support
- Staff subsidies

### **Description of the support**

InterTrade Ireland helps SME's across the island of Ireland by offering practical cross border business funding, intelligence and contacts.

They offer support to businesses new to cross border trade with New to Accelerate Vouchers offering support up to value of £10,000.

Go to Tender Programme: Tendering and procurement training and one to one mentoring for businesses who want to expand through tendering particularly on a cross border level.

Meet the Buyer event: Free event to allow businesses to meet with key buyers from the public sector.

Sales development support: Staff subsidies and graduate programmes for companies who want to develop and grow cross border sales. Acumen programme: Offering 50% of sales person salary to a maximum of £15k grant.

Elevate programme offering consultancy support up to the value of £5k specific to growing cross border trade

Innovation in business support for businesses completing cross border trading. Graduate support for developing new product and innovative processes – maximum aid £44,250. Various other supports available if business is eligible.

### **Agency Responsible for Support**

InterTrade Ireland – NI office based in Newry

### **Maximum and minimum funding available**

High calibre businesses will only be accepted. Various levels of funding – as detailed above.

### **Is this Specific to Renewable Energy businesses?**

No. InterTrade Ireland will support all types of business that are interested in expanding cross border trading.

### **Is this a local, regional or national support?**

Any business located on the Island of Ireland who want to begin or grow cross border trading.

## **Renewable Heat Incentive**

### **Link to support information on website**

<https://www.ofgem.gov.uk/environmental-programmes/non-domestic-renewable-heat-incentive-rhi/northern-ireland-renewable-heat-incentive>

### **Type of Support**

Incentive on heat produced

### **Description of the support**

RHI – Financial incentive to encourage the uptake and use of renewable heat such as biomass systems, ground/air source heat pumps, geothermal and biogas below 200kWth. Department of Enterprise, Trade and Investment set the policy and tariff rates, with payments being made for 20 years. Ofgem administer the scheme on behalf of DETI. Businesses must meet the eligibility criteria when applying for accreditation. There must be at least 1 non domestic use for the heat being produced and the installation must meet other requirements; being new at time of installation and the heat being produced must be metered correctly, and so on.

### **Agency Responsible for Support**

Office of gas & electricity markets (OFGEM)

<https://www.ofgem.gov.uk/>

### **Maximum and minimum funding available**

RHI – funding is available for 20 years, payments depend on amount of eligible heat being produced (kW hours).

### **Is this Specific to Renewable Energy businesses?**

RHI - No, funding is available to any business that has an eligible use for heating. E.g. offices/ poultry houses etc.

**Is this a local, regional or national support?**

National, available in any area, England, Scotland, Wales and Northern Ireland.

**Other useful/relevant information**

RHI – this support is no longer available to new applicants.

---

**Renewables Obligation (ROCs)****Link to support information on website**

<https://www.ofgem.gov.uk/environmental-programmes/renewables-obligation-ro>

**Type of Support**

Green Certificate

**Description of the support**

ROC's – aims to increase the amount of electricity supplied by electricity suppliers from renewable sources. Renewable Obligation Certificates (ROC's) are green certificates given to generators that use accredited renewable systems to create electricity. These can be traded. If suppliers of electricity do not present the correct amount of ROCs they are made to pay the equivalent amount into a buyout fund. This encourages them to source more of their electricity from renewable sources, instead of being fined for not meeting their obligation.

**Agency Responsible for Support**

Office of gas & electricity markets (OFGEM) <https://www.ofgem.gov.uk/>

**Maximum and minimum funding available**

ROCs – no funding, taxation when suppliers don't meet their obligation.

**Is this Specific to Renewable Energy businesses?**

ROC's - No, this scheme is open to any accredited electricity generator.

**Is this a local, regional or national support?**

National, available in any area, England, Scotland, Wales and Northern Ireland.

**Other useful/relevant information**

ROCs – tariff is expected to change in September 2016 and then from March 2017 they will be done away with.

---

Soft supports e.g. mentoring, training, specialist advice, networks

**Northern Ireland Renewables Industry Group****Link to support information on website**

<http://www.ni-rig.org/>

**Type of Support**

Representatives of renewables in NI, giving advice on renewable energies.

**Description of the support**

Provides the companies it represents with knowledge and advice on marine and wind renewable energy projects/ ideas. It has well developed sub groups which are capable of dealing any of these areas:



- Planning & environment
- Markets
- Grid
- Marine energy

### Agency Responsible for Support

Northern Ireland Renewables Industry Group <http://www.ni-rig.org/>

### Maximum and minimum funding available

n/a

### Is this Specific to Renewable Energy businesses?

No, any business looking advice and support in terms of renewable energies can become a member and seek advice.

### Is this a local, regional or national support?

Regional support, covering all of NI and businesses interested in investment to NI.

## Carbon Trust

### Link to support information on website

<http://www.carbontrust.com/home/>

### Type of Support

Carbon Zero Northern Ireland provides technology development and innovation support to Industry and will deliver an extensive array of training courses focused on developing a skilled workforce in renewable energy in Northern Ireland.

The courses will cover the areas of:

- Renewable energy awareness for homes and business
- Renewable energy technologies including Wind, Solar, Biomass and Hydro
- Waste management
- Responsible sourcing of materials
- Sustainable construction

Current R&D under the Carbon Zero NI programme will position Northern Ireland as an international player in the sustainable development and clean energy sectors

### Description of the support

The Carbon Zero NI programme is a sector wide initiative by the Further Education sector under the leadership of the South West College in Northern Ireland. This programme is supported by the Department of Employment and Learning in Northern Ireland through the Innovation Fund, Employer Support Programme.

Courses developed under the Carbon Zero NI programme will address the ever increasing need for skills and knowledge in the area of clean energy development in Northern Ireland.

For more information on the courses offered by each Further Education College under the Carbon Zero NI Programme click on any of the College logos below:

- Belfast Met
- Northwest regional college

- South West College
- Southern Regional College

**Agency Responsible for Support**

Department of Employment and Learning in Northern Ireland through the Innovation Fund, Employer Support Programme.

**Maximum and minimum funding available**

N/A – Courses available

**Is this Specific to Renewable Energy businesses?**

Yes on all types of Renewable Energy

**Is this a local, regional or national support?**

Local Regional Northern Ireland

**Other useful/relevant information**

Research

The technical research will focus on three key areas of growth in Northern Ireland:

- Wind Energy
- Energy from Waste
- Clean Energy Storage

These technologies have been identified as areas that require immediate support in relation to dedicated research and development as they are evolving rapidly at both a local and international level.

---

**CAFRE – College of Agriculture, Food & Rural Development****Link to support information on website**

<http://www.cafre.ac.uk/>

**Type of Support**

CAFRE offers a range of support services to ensure your time at College is both educational and enjoyable. At all campuses the support of students is a priority for College staff.

**Description of the support**

College of Agriculture, Food and Rural Enterprise is a public tertiary level land-based college offering training in agriculture, food technology, horticulture, equine and agri-business operating at three sites in Northern Ireland.

**Agency Responsible for Support**

CAFRE – College of Agriculture, Food & Rural Development

<http://www.cafre.ac.uk/>

**Is this Specific to Renewable Energy businesses?**

No this training is based on all types related to agriculture and environmental however

## Is this a local, regional or national support?

Local Regional – Northern Ireland

---

## Research and Development Supports

### Invest NI Innovation Vouchers

#### Link to support information on website

<http://www.investni.com/support-for-business/funding-for-business/funding-for-innovation-and-research-and-development.html>

#### Type of R&D Support

An Innovation Voucher offers you £5000 to 'purchase' specialist knowledge from one of 39 respected universities, colleges and research organisations throughout Northern Ireland and the Republic of Ireland. This knowledge can help you to expand, improve or create new products, services and processes.

#### Description of the support

If yours is a small or medium-sized\* business you can apply for an innovation voucher to 'purchase' specialist knowledge. This will help you to develop solutions to business issues, or improve or create products, services and processes that will help your business compete more effectively.

Typical projects we support include:

- Ideas for new or improved products, processes and services.
- Product and service testing.
- Access to information and expertise on new materials.
- Tapping into research and scientific research

#### Agency Responsible for Support

Invest NI

<https://www.investni.com/>

Enterprise Ireland

<http://www.enterprise-ireland.com/en/>

#### Maximum and minimum funding available

£5000

#### Is this Specific to Renewable Energy businesses?

No all business

#### Is this a local, regional or national support?

This is based for all of Ireland, North & South

#### Other useful/relevant information

The Innovation Voucher Scheme, run by Invest NI and Enterprise Ireland, is designed to help you tap into specialist knowledge to develop forward-thinking solutions or ideas to expand, improve or create new products, services and processes. You do not need to be an Invest NI or Enterprise Ireland client company to apply.

---

## Tech Start Up

### Link to support information on website

TechStartNI <http://www.techstartni.com/>

### Type of R&D Support

As a team, we work tirelessly to help our companies win customers, make key hires, and develop strategies and tactics to achieve the fastest possible growth in the value of the company.

### Description of the support

We seek to be trusted peers and partners to help entrepreneurs realise their vision with experienced and timely support. With our backing, Founders can focus on customer development and validating their business model.

### Agency Responsible for Support

TechStartNI <http://www.techstartni.com/>

### Maximum and minimum funding available

"Concept" grant (of up to £10k) and a "Concept Plus" grant (of up to £25k).

### Is this Specific to Renewable Energy businesses?

No this is based on all types of Technologies

### Is this a local, regional or national support?

Regional Based (Northern Ireland)

### Other useful/relevant information

In a competitive basis this fund seeks to support entrepreneurs with grants directed towards exploring the viability and commercial potential of an innovative concept.

---

## Social and Community supports (focused on not for profit)

### Action Renewables

### Link to support information on website

<http://actionrenewables.co.uk/>

### Type of Social Enterprise/Community Enterprise Support

Not for profit organisation

### Description of the support

Action Renewables support commercial renewable energy development, develop and support European Projects, offer quality assurance to the renewable energy industry (Micro-generation Certification Scheme MCS) and provide advice and information to Government.

### Agency Responsible for Support

Action Renewables <http://actionrenewables.co.uk/>

### Maximum and minimum funding available

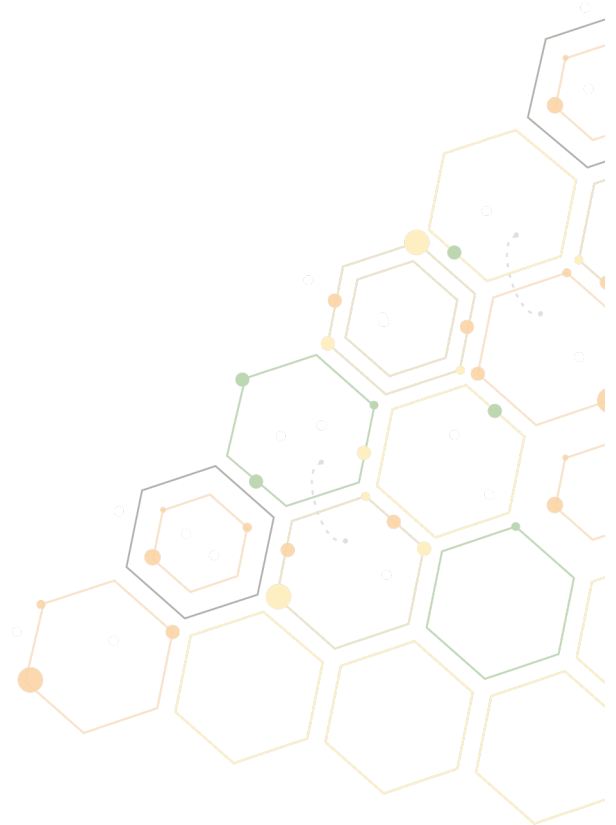
N/A

**Is this Specific to Renewable Energy businesses?**

As an organisation we deliver a wide range of services and activities which include supporting commercial renewable energy development, developing and supporting European Projects, offering quality assurance to the renewable energy industry and providing advice and information to Government. In addition to our current list of services we are also happy to undertake bespoke services for our clients.

**Is this a local, regional or national support?**

Action Renewables is a regional based organisation which is located in Northern Ireland however it has carried out work across the UK.





# GREBE

Generating Renewable Energy  
Business Enterprise

[www.grebeproject.eu](http://www.grebeproject.eu)

## Norway



Northern Periphery and  
Arctic Programme  
2014-2020





## Norway

### What kind of agencies offer support to SMEs?

There are a number of different agencies which support renewable energy businesses in Norway. The business support system is largely funded and organized through public funding:

- Local offices (Municipality)
- Innovation Norway
- ENNOVA – Specialist instrument on RE innovations (National Agency)
- Norwegian Research Council

Several years ago, the Norwegian Government established Enova, a public agency. Enova has become the Government's most important instrument for reaching targeted goals of energy efficiency and renewable energy production. Enova administers a series of programmes and support schemes (in the form of investment aid) covering various business areas. These include wind power, solar, Hydrogen, and energy efficiency in industry and in buildings. Enova has specific goals, quantified in terra watt hours of energy, and there is set specific dates for these goals to be reached. Enova is provided with long-term financing. Since 2002, the Government has supplied Enova with 1.5 billion Euros. Enova has an independent board of directors and an independent administration. They decide on the best way to manage the available funds to achieve the set goals. This leads to results!

The Ministry of Energy (OED) has evaluated Enova. It has been a good reminder of the long term character of promoting renewable energy and energy efficiency. It has been a challenge for the agency to develop good support-schemes, to recruit projects and after that to avoid cancellations. It takes time before the solar system, or the wind mill, produces energy – sometimes as much as five years. This reminds us that promoting the development towards a more environmentally friendly energy sector requires long term policies and a predictable framework.

### Is it clear to the SME where they should go for support?

**Researchers** - The Research Council of Norway's programme on Commercialising R&D Results (FORNY2020) promotes innovation based on research results. The programme facilitates the commercialisation of results from projects conducted at publicly-funded research institutions and helps to bring the products and services to the market.

The FORNY2020 programme is designed to trigger the value-creating potential of projects conducted at publicly-funded research institutions. The programme provides funding to newly-established companies based on these projects as well as to Technology Transfer Offices (TTOs) affiliated with the research institutions.

The programme seeks to:

- promote the establishment of new companies based on research results
- generate growth in existing companies by providing funding to projects based on research results.
- enhance the professionalism and efficacy of the TTOs affiliated with universities, university colleges, hospitals and independent research institutes in their respective fields.

**Entrepreneurs** – Innovation Norway create value by stimulating to profitable business development throughout Norway. Our programmes and services are intended to create more successful entrepreneurs, more enterprises with capacity for growth and more innovative business clusters. Innovation Norway contributes to:

- Enhancing innovation in Norwegian enterprises and industry
- Building competitive Norwegian enterprises at both domestic and international markets
- Promoting Norwegian enterprises
- Promoting Norway as an attractive tourist destination
- Securing development in rural areas
- Transforming ideas into successful business cases
- Promote interaction between enterprises, knowledge communities and R&D institutions

**Is there one agency which is the first place for businesses to go?**

The Environmental Portal – is an online tool which gives an overview of the variety of supports available to all entrepreneurs and researchers in the renewable energy sector.

**Are business supports restricted to certain types of business, or enhanced for certain types of SMEs (e.g. only available for manufacturing or for exporters)?**

There is a particular focus on businesses with export potential.

**Are there special supports for RE businesses?**

The Research Council of Norway has granted funding of 8 new Centres for Environmental-friendly Energy Research.

---

## Financial Supports

### Start UP Grants

**Link to support information on website**

Innovation Norway [www.innovasjon Norge.no](http://www.innovasjon Norge.no)

**Type of Finance Support**

Business Finance support for start ups

**Description of the support**

Money to establish business

**Agency Responsible for Support**

Innovation Norway [www.innovasjon Norge.no](http://www.innovasjon Norge.no)

**Maximum and minimum funding available**

€10.000,-

**Is this Specific to Renewable Energy businesses?**

No

**Is this a local, regional or national support?**

National Programme – with regional operators

---



## Business Loans

### Link to support information on website

Innovation Norway [www.innovasjon Norge.no](http://www.innovasjon Norge.no)

### Type of Finance Support

Loans

### Description of the support

IN can give finance support to businesses after application:

- 1) Short Time loans
- 2) Investments

### Agency Responsible for Support

Innovation Norway [www.innovasjon Norge.no](http://www.innovasjon Norge.no)

### Maximum and minimum funding available

Subject to need (limited) in cooperation with bank loans.

### Is this Specific to Renewable Energy businesses?

No

### Is this a local, regional or national support?

National with regional operators

---

## Narvik Capital

### Link to support information on website

Narvik Kapital [www.Fpn.no](http://www.Fpn.no)

### Type of Finance Support

Seed-Funding

### Description of the support

Funding to start-ups that has a growth potential in combination with other funding.

Step by step funding/investment.

### Agency Responsible for Support

Narvik Kapital [www.Fpn.no](http://www.Fpn.no)

### Maximum and minimum funding available

Takes per cent ownership in companies due to investment

### Is this Specific to Renewable Energy businesses?

No

### Is this a local, regional or national support?

Local support

---

## Forte Narvik

### Link to support information on website

Forte Narvik [www.Forte.narvik.no](http://www.Forte.narvik.no)

### Type of Finance Support

Seed-Funding/Equity Funding

### Description of the support

Funding to start-ups that has a growth potential in combination with other funding.

Step by step funding/investment.

### Agency Responsible for Support

Forte Narvik [www.Forte.narvik.no](http://www.Forte.narvik.no)

### Maximum and minimum funding available

Dependent on investment strategy

### Is this Specific to Renewable Energy businesses?

No

### Is this a local, regional or national support?

Local support

---

## Norinnova Invest

### Link to support information on website

Norinnova Invest [www.Norinnova.invest.no](http://www.Norinnova.invest.no)

### Type of Finance Support

Seed Funding/Equity Investment

### Description of the support

Funding to start-ups that has a growth potential in combination with other funding.

Step by step funding/investment.

### Agency Responsible for Support

Norinnova Invest [www.Norinnova.invest.no](http://www.Norinnova.invest.no)

### Maximum and minimum funding available

Dependent on investment strategy

### Is this Specific to Renewable Energy businesses?

No

### Is this a local, regional or national support?

Local Support

---

## Equity Investment

### Link to support information on website

Equity Funding Norway

### Type of Finance Support

Investment

### Description of the support

Growth Business Investment

### Agency Responsible for Support

- 1) Hitech Vision Private Equity
- 2) Norvestor Equity
- 3) FSN Capital
- 4) Altor Equity

### Maximum and minimum funding available

Dependent on Investment Strategy

### Is this Specific to Renewable Energy businesses?

No

### Is this a local, regional or national support?

National

---

## Venture Capital Investment

### Link to support information on website

Venture Capital Funding Norway

### Type of Finance Support

Investment

### Description of the support

Investment in start-up technology business.

### Agency Responsible for Support

- 1) Energy venture
- 2) Northzone Venture
- 3) Verdan capital

### Maximum and minimum funding available

Dependent on Investment Strategy

### Is this Specific to Renewable Energy businesses?

No

### Is this a local, regional or national support?

National

## Taxation for businesses

### Green Certificates

#### Link to support information on website

[www.Enova.no](http://www.Enova.no)

#### Type of Taxation or Welfare Support

Extra income: 1,5-2 Euro Cent/KWh

#### Description of the support

Incentives to produce more renewable energy in Norway

#### Agency Responsible for Support

Skatteetaten

#### Maximum and minimum funding available

Based on production

#### Is this Specific to Renewable Energy businesses?

Relevant for the larger Solar PV Systems

#### Is this a local, regional or national support?

National

---

## Welfare supports for businesses

### Enova-Projects

#### Link to support information on website

Enova [www.Enova.no](http://www.Enova.no)

#### Type of Taxation or Welfare Support (be specific)

Renewable Energy Support Projects

#### Description of the support

- Development and introduction of new energy and technologies in the market.
- Energy Efficiency projects
- Households – Phase out oil boilers
- Energy recovery (Industry)
- Subsidy Programmes to increase the demand of renewable energy
- Energy measures
- Making products available in the market
- Testing of products
- Nationwide information and advisory service

#### Agency Responsible for Support

Enova [www.Enova.no](http://www.Enova.no)

#### Maximum and minimum funding available

Dependent on programme/Incentives

**Is this Specific to Renewable Energy businesses?**

Yes

**Is this a local, regional or national support?**

National

---

**National Investment Support****Link to support information on website**

Enova [www.Enova.no](http://www.Enova.no)

**Type of Taxation or Welfare Support**

Welfare support to private households and commercial buildings

**Description of the support**

- 1) Private Households:
  - a) Solar Heating: Euro 1000 + Euro 20/m<sup>2</sup> collector area
  - b) Solar Electricity: Euro 1000 + Euro 12,5/KWh
- 2) Commercial buildings:
  - a) Solar Heating: Euro 20/m<sup>2</sup> collector area
  - b) Solar electricity: No investment support – up to 50% if new technology

**Agency Responsible for Support**

Enova [www.Enova.no](http://www.Enova.no)

**Maximum and minimum funding available**

Dependent on private household or commercial building and energy production

**Is this Specific to Renewable Energy businesses?**

Yes

**Is this a local, regional or national support?**

National

---

**Concessions for businesses****Concessions for Hydro Power Plants****Link to support information on website**

[www.Oed.no](http://www.Oed.no) [www.NVE.no](http://www.NVE.no)

Oil and Energy Department/ Norwegian Water resources and Energy Directorate

**Type of Taxation or Welfare Support (be specific)**

Concessions for Energy Production – Hydro Power Plants

**Description of the support**

Major Development Projects – The King in Council has been given licensing authority for projects pursuant to the Watercourse Regulation Act and developments with installations exceeding 10 MW pursuant to the Water Resources Act. The NVE handles the work during the application process.

Hydro Power Plants exceeding 10MW or with an annual production exceeding 50 GWh are always subject to clarification via-a-via the Master Plan for Water Resources. Projects which require processing pursuant to the Master Plan for Water Resources must submit an application to the NVE, which will process it in collaboration with the Directorate for Nature Management.

The Ministry will prepare the project for the King in Council and present a recommendation. The recommendation is drawn up based on the application, The NVE's recommendation, the opinion of affected ministries and local authorities, as well as the Ministry's own assessments.

### **Agency Responsible for Support**

[www.NVE.no](http://www.NVE.no)

### **Maximum and minimum funding available**

No funding available

### **Is this Specific to Renewable Energy businesses?**

Yes

### **Is this a local, regional or national support?**

National

---

## **Concessions for Small Hydro Power Plants**

### **Link to support information on website**

[www.Oed.no](http://www.Oed.no) [www.NVE.no](http://www.NVE.no)

### **Type of Taxation or Welfare Support (be specific)**

Concession for Energy Production – Small Hydro Power Plants

### **Description of the support**

The NVE has been delegated the licensing authority pursuant to the Water Resources Act for power plants with an installed capacity below 10MW and without water regulation exceeding the licensing limit in the Watercourse Regulation Act.

Small Hydro Power Plants are subject to somewhat simpler procedures than major projects, which contributes to faster processing for these projects. The Ministry has published Guidelines for SHPP with the aim of facilitating regional planning and strengthening the basis for comprehensive, efficient and predictable licence processing.

### **Agency Responsible for Support**

[www.NVE.no](http://www.NVE.no)

### **Maximum and minimum funding available**

No funding available

### **Is this Specific to Renewable Energy businesses?**

Yes

### **Is this a local, regional or national support?**

National

## Soft supports

### Innovation Norway – Mentoring Programme

#### Link to support information on website

[www.innovasjon Norge.no](http://www.innovasjon Norge.no)

#### Type of Support

Mentoring Programme

#### Description of the support

Focus on export

#### Agency Responsible for Support

National programme with international and regional operators on contract

#### Maximum and minimum funding available

30 – 100 hours free of charge

#### Is this Specific to Renewable Energy businesses?

Some of the offices can provide specific services to renewable energy businesses

#### Is this a local, regional or national support?

Regional, national and international service

---

### Norwegian Solar Energy Society

#### Link to support information on website

[www.solenergi.no](http://www.solenergi.no)

#### Type of Support

Energy, Business and R&D Policy

Networks

#### Description of the support

Focus on:

- 1) Solar PV
- 2) Solar Electricity
- 3) Solar Heating
- 4) Networking activities
- 5) Promotes increased knowledge and use of solar energy
- 6) Business opportunities
- 7) Research and Development Projects

#### Agency Responsible for Support

Norsk Solenergiforening – Norwegian Solar Energy Society

#### Maximum and minimum funding available

No funding available

**Is this Specific to Renewable Energy businesses?**

Yes

**Is this a local, regional or national support?**

National/Regional

---

**Research and Development supports****UIT – Arctic University, Technology Department****Link to support information on website**[www.Uit.no](http://www.Uit.no)**Type of R&D Support**

Technology

**Description of the support**

Research on Renewable Energy

**Agency Responsible for Support**

UIT – Technology Department

**Is this Specific to Renewable Energy businesses?**

No

**Is this a local, regional or national support?**

Regional Institution with local technology department

---

**NORUT NARVIK****Link to support information on website**[www.Norut.no](http://www.Norut.no)**Type of R&D Support**

Technology

**Description of the support**

Research on Renewable Energy – Solar PV

**Agency Responsible for Support**

Norut Narvik

**Is this Specific to Renewable Energy businesses?**

Own RE Department

**Is this a local, regional or national support?**

Local Research Institution



## Social and Community supports (focused on not for profit in RE area)

None

### Other

#### SIVA INCUBATOR

##### Link to support information on website

[www.Fpn.no](http://www.Fpn.no)

##### Type of Support

Focus on Start-Ups

##### Description of the support

- Reduced office price
- Business consult (25% payment – 75% support)
- Development of Business Model
- Funding

##### Agency Responsible for Support

SIVA/NSP

##### Maximum and minimum funding available or maximum value of funding if in kind (or alternative measure)

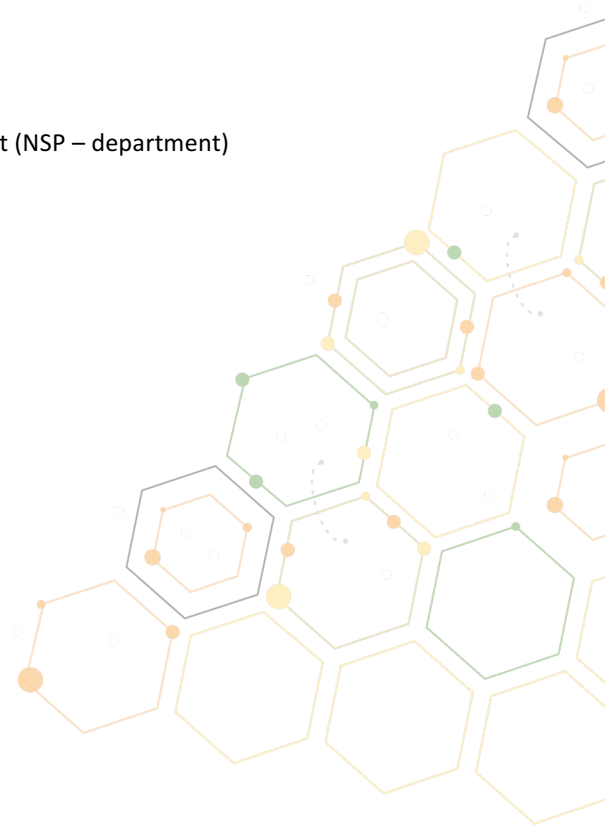
No funding available

##### Is this Specific to Renewable Energy businesses?

No

##### Is this a local, regional or national support?

SIVA = National Programme with local/regional operators on contract (NSP – department)





# GREBE

Generating Renewable Energy  
Business Enterprise

[www.grebeproject.eu](http://www.grebeproject.eu)

## Scotland



Northern Periphery and  
Arctic Programme  
2014-2020



## Scotland

### What kind of agencies offer support to SMEs?

Support predominantly comes from central Government, particularly in regard to financial subsidy. This is disseminated at a variety of levels from a UK wide scale to regional agencies, such as Highlands and Islands Enterprise.

QUANGOs and NGOs also provide support to SMEs, the Energy Saving Trust being one of the key agencies in this field.

Membership organisations, such as the Orkney Renewable Energy Forum (OREF), seek to bring individuals and small business together to help achieve certain aims. For example, OREF aims to address strategic issues affecting Orkney's renewables sector through collaboration with members, the local community, key stakeholders, and academics and researchers.

Smaller charities, such as Community Energy Scotland, also aim to provide advice and assistance to SMEs in this sector.

### Is it clear to the SME where they should go for support?

There is a Government website (<https://www.mygov.scot/funding-opportunities/>) which lists various funding opportunities; however, this does not necessarily contain all possible funding sources.

If there is a community element to the project Local Energy Scotland clearly lays out how they can get support (<http://www.localenergyscotland.org/>).

### Is there one agency which is the first place for businesses to go?

This depends on the type of venture:

- if it is a community based business then Local Energy Scotland is the first calling point;
- if it is innovation or research based Scottish Enterprise, or its subsidiaries, is usually the most relevant place;
- for direct subsidy for electricity generated through the feed-in tariff scheme the Energy Saving Trust is the first point of contact.

### Are business supports restricted to certain types of business, or enhanced for certain types of SMEs (e.g. only available for manufacturing or for exporters)?

In Scotland there is a strong focus on community renewable energy projects. These have additional funds available to them through the Community and Renewable Energy Scheme (CARES). Through collaboration with communities this fund can be accessed by others.

The variety of business supports means some SMEs may not necessarily be eligible to all supports. For example many supports are either exclusively for R&D or specifically state such projects are not eligible.

### Are there special supports for RE businesses?

Yes, probably the most important of these is the subsidy system for electricity generated by renewable sources through the feed-in tariff for small scale projects (under 5 MW) and ROC (now CfD mechanism) (for larger projects). However, feedback from industry shows that the reduced support of government is having a very negative impact. One of our respondents to another element of GREBE termed these changes as a Government "shutdown of renewables", so although there are specific supports in place the strength of these is becoming questionable.

Business supports available in Scotland are described in more detail in the coming pages under the following themes:

- Financial Support (grants, loans, equity investment)
- Taxation or welfare supports or concessions for businesses
- Soft supports e.g. mentoring, training, specialist advice, networks
- Research and Development supports
- Social and Community supports (focused on not for profit)
- Other- e.g. Incubation space or office space (

## Financial Supports

### UK Green Investment Bank plc (GIB)

#### Link to support information on website

<http://www.greeninvestmentbank.com/>

#### Type of Finance Support

Both fund and direct investment.

#### Description of the support

This funding institution was created by the UK Government to attract private sector investment in areas relating to environmental preservation and improvement – of which renewable energy are a major element. Financing can be for a wide variety of projects including the deployment of new technologies, community scale projects as well as larger renewable energy developments such as large offshore wind farms.

#### Agency Responsible for Support

UK Green Investment Bank plc

<http://www.greeninvestmentbank.com/>

#### Maximum and minimum funding available

Backs small project of £2m to large projects of £1bn.

#### Is this Specific to Renewable Energy businesses?

Both renewables and energy efficiency.

#### Is this a local, regional or national support?

National

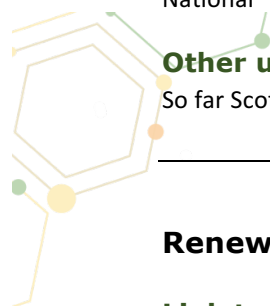
#### Other useful/relevant information

So far Scotland has seen very little benefit from this scheme.

### Renewable Energy Investment Fund (REIF)

#### Link to support information on website

<http://www.scottish-enterprise.com/services/attract-investment/renewable-energy-investment-fund/overview>



**Type of Finance Support**

The fund can provide loans, guarantees and equity investments

**Description of the support**

The investment fund is designed to drive the growth of renewable energy in Scotland through supporting businesses and community organisations to develop their own local renewable projects. REIF is a discretionary fund with no minimum or maximum deal values stipulated; projects are assessed on a case by case basis.

Companies and community groups working in the area of renewable energy at the test or commercialisation stage, seeking to assemble a funding package, are eligible for support from the REIF. Examples of areas that REIF can support include marine energy, community owned renewables and renewable district heating, although this list is not exhaustive.

**Agency Responsible for Support**

Scottish Enterprise

<http://www.scottish-enterprise.com/services/attract-investment/renewable-energy-investment-fund/overview>

**Maximum and minimum funding available**

No maximum or minimum

**Is this Specific to Renewable Energy businesses?**

Yes

**Is this a local, regional or national support?**

Regional (Scotland only)

---

**Scottish Innovative Foundation Technologies fund****Link to support information on website**

<http://www.scottish-enterprise.com/services/develop-new-products-and-services/sift/overview>

**Type of Finance Support**

Grant

**Description of the support**

The aim of the fund is to help drive down the cost of energy and develop the offshore wind sector in Scotland through innovation in deep-water offshore wind foundation design and installation. Although the funding is open to larger organisations it is also available for SMEs.

**Agency Responsible for Support**

Scottish Enterprise

<http://www.scottish-enterprise.com/services/develop-new-products-and-services/sift/whats-involved>

**Maximum and minimum funding available**

Up to £15 million available, rates of support vary depending on project

**Is this Specific to Renewable Energy businesses?**

Yes – offshore renewables

**Is this a local, regional or national support?**

Regional (Scotland only)

---

**InnovFin Energy Demo Projects****Link to support information on website**

<http://www.eib.org/products/blending/innovfin/products/energy-demo-projects.htm>

**Type of Finance Support**

Provides loans or loan guarantees

**Description of the support**

InnovFin Energy Demo Projects provides loans or loan guarantees between €7.5 million and €75 million to first-of-a-kind commercial-scale demonstration projects in the fields of renewable energy and hydrogen and fuel cells, helping to bridge the gap from demonstration to commercialisation.

**Agency Responsible for Support**

European Investment Bank

<http://www.eib.org/index.htm>

**Maximum and minimum funding available**

Loans and guarantees from €7.5 million to €75 million. The total project costs must be a minimum of €15 million.

**Is this Specific to Renewable Energy businesses?**

Yes

**Is this a local, regional or national support?**

European wide

---

**Barclays Renewable Energy Fund****Link to support information on website**

<https://www.barclayscorporate.com/sector-expertise/agriculture/renewable-energy.html>

**Type of Finance Support**

Provides loans

**Description of the support**

The £100 million fund for loans is designed to help farmers in the UK meet the costs of renewable energy initiatives like wind farms, solar panels, organic waste power and hydro plants.

**Agency Responsible for Support**

Barclays bank

<https://www.barclayscorporate.com/>

**Maximum and minimum funding available**

A term loan of £25,000 and above is available.

**Is this Specific to Renewable Energy businesses?**

Yes

**Is this a local, regional or national support?**

National

**Other useful/relevant information**

With the changes to the feed-in tariff the effectiveness of this scheme is likely to be reduced.

---

**EIB - European Fund for Strategic Investments (EFSI)****Link to support information on website**

<http://www.eif.org/index.htm>

**Type of Finance Support**

Both debt and equity products

**Description of the support**

EFSI is an EU initiative which aims to help overcome the investment gap in the EU by mobilising private financing for strategic investments.

**Agency Responsible for Support**

SMEs interested in EFSI transactions financed via the EIF (European Investment Fund) should refer to information on EIF financial intermediaries:

[http://www.eif.org/what\\_we\\_do/where/gb/index.htm](http://www.eif.org/what_we_do/where/gb/index.htm)

**Maximum and minimum funding available**

No specific maximum or minimum requirements in place.

**Is this Specific to Renewable Energy businesses?**

No

**Is this a local, regional or national support?**

National

**Other useful/relevant information**

After the UK exit from Europe the status of this fund in Scotland is uncertain

---

**District Heating Loan Fund****Link to support information on website**

<http://www.energysavingtrust.org.uk/scotland/grants-loans/district-heating-loan>

**Type of Finance Support**

Provides loans

**Description of the support**

Loans offered on a commercial basis for both renewable and low carbon, low emission technologies in Scotland, for heating distributed through a network of pipes to provide space and water heating in homes or offices.

Loans of up to £400,000 per project are available over a 10-year period.

### **Technical support is also available through the programme.**

The interest rate on loans is set at 3.5%

### **Agency Responsible for Support**

Energy Saving Trust Scotland

<http://www.energysavingtrust.org.uk/scotland>

### **Maximum and minimum funding available**

Maximum £400,000, no minimum given

### **Is this Specific to Renewable Energy businesses?**

Although it is designed to promote renewable energy any business may apply.

### **Is this a local, regional or national support?**

Regional (Scotland)

---

## **Taxation or welfare supports or concessions for businesses**

### **Enterprise Investment Scheme**

#### **Link to support information on website**

<https://www.gov.uk/government/publications/the-enterprise-investment-scheme-introduction>

#### **Type of Taxation or Welfare Support (be specific)**

Tax and income gains relief

#### **Description of the support**

The purpose of the support is to encourage investment to companies not listed on the stock exchange and often have a high level of associated. The headline benefits are:

- 30% upfront Income tax relief up to maximum investment of £1 million, which can be carried back to the previous tax year
- 100% Inheritance Tax relief (provided the investments have been held for at least 2 years at time of death)
- Capital gains tax deferral for the life of the investment
- Tax-free growth
- Tax relief from investment losses

### **Agency Responsible for Support**

HM Revenue and Customs and administered through their Small Company Enterprise Centre office.

<https://www.gov.uk/government/organisations/hm-revenue-customs>

### **Maximum and minimum funding available**

The maximum tax relief is £300,000

### **Is this Specific to Renewable Energy businesses?**

No



**Is this a local, regional or national support?**

National

---

**Seed Enterprise Investment Scheme****Link to support information on website**

<https://www.gov.uk/guidance/seed-enterprise-investment-scheme-background>

**Type of Taxation or Welfare Support (be specific)**

Tax and income gains relief

**Description of the support**

The scheme aims to encourage investment in start-ups which are otherwise deemed too risky. The headline benefits are:

- Investors get 50% income tax relief on the cost of shares, for a maximum annual investment of £100,000.
- No Capital Gains Tax is paid on profits earned on shares held for more than three years. Capital gains which are realised before three years has expired, but which are reinvested into qualifying SEIS shares, are also exempt from Capital gains tax (again £100,000 limit).
- If the company goes bankrupt, investors may claim loss relief on their investment which is equal to half of their total investment multiplied by their tax rate.
- 100% Inheritance Tax relief.

**Agency Responsible for Support**

HM Revenue and Customs and administered through their Small Company Enterprise Centre office.

<https://www.gov.uk/government/organisations/hm-revenue-customs>

**Maximum and minimum funding available**

Cannot raise more than £150,000 through the scheme

**Is this Specific to Renewable Energy businesses?**

No

**Is this a local, regional or national support?**

National

---

Soft supports e.g. mentoring, training, specialist advice, networks

**Low Carbon Skills Fund****Link to support information on website**

<https://www.skillsdevelopmentscotland.co.uk/what-we-do/our-products/low-carbon-skills-fund/>

**Type of Support****Fund for training****Description of the support**

The LCSF enables small businesses from any sector to access training in low carbon methods. Up to £5,000 is available. We refund up to 50% of employee training costs, up to a maximum of £1,000 per employee.

- Training might include:
- Energy efficiency measures
- Waste management and re-use
- Energy assessors or advisers
- Sustainable resource management
- Installing microgeneration products such as biomass boilers, ground source heat pumps, or solar panels.

**Agency Responsible for Support**

Skills Development Scotland

<https://www.skillsdevelopmentscotland.co.uk/>

**Maximum and minimum funding available**

£5,000

**Is this Specific to Renewable Energy businesses?**

It relates to renewables but non-renewable businesses can apply

**Is this a local, regional or national support?**

Regional (Scotland only)

---

**Scottish Enterprise 2015 – 2018 Business Plan****Link to support information on website**

<http://www.scottish-enterprise.com/about-us/what-we-do/business-plan>

**Type of Support**

Development strategy

**Description of the support**

Scottish Enterprise is a sponsored (but non-departmental) Scottish Government body. The 2015 – 2018 Business plan sets out their approach to delivering economic growth for Scotland. Whilst not exclusively aimed at renewable energy it is relevant to many schemes. Particularly pertinent is the aim to encourage innovation in SMEs.

**Agency Responsible for Support**

Scottish Enterprise

[www.scottish-enterprise.com](http://www.scottish-enterprise.com)

**Maximum and minimum funding available**

N/A

**Is this Specific to Renewable Energy businesses?**

No

**Is this a local, regional or national support?**

Regional (Scotland only)

---

## Marine Energy Parks

### Link to support information on website

<http://www.hi-energy.org.uk/hi-marine-energy-park.htm>

### Type of Support

Brings stakeholders together and creates a supportive business environment.

### Description of the support

Marine Energy Parks (MEPs) are a UK government initiative that brings together local and national government, Local Enterprise Partnerships, technology developers, academia and industry for the development of the marine energy sector, with the aim of creating a supportive business environment for accelerating the commercialisation of wave and tidal technology. MEPs should help provide an arena where SMEs can provide their services to this growing sector.

### Agency Responsible for Support

HI Energy

<http://www.hi-energy.org.uk>

### Maximum and minimum funding available

N/A

### Is this Specific to Renewable Energy businesses?

It can benefit others but primarily yes

### Is this a local, regional or national support?

National but region/local marine energy parks

---

## Scotland's International Technology and Renewable Energy Zone (ITREZ)

### Link to support information on website

<http://www.scottish-enterprise.com/services/develop-new-products-and-services/itrez/overview>

### Type of Support

Provides SMEs with the opportunity to have a base closer to large industry and build partnerships

### Description of the support

The project aim is to bring business and academia together by stimulating co-location, innovation, and investment in Scotland's offshore renewable energy sector. Centered in Glasgow, ITREZ has two purpose built buildings: 'inovo', and the Technology and Innovation Centre, acting as a hub for around 450 renewables engineers and project managers, and 850 energy academics and researchers. For SMEs the project allows them to be located closer to large industry within ITREZ.

### Agency Responsible for Support

Scottish Enterprise

### Maximum and minimum funding available

N/A

**Is this Specific to Renewable Energy businesses?**

Yes - offshore

**Is this a local, regional or national support?**

Regional (Scotland only)

---

**Research and Development supports****European Marine Energy Centre (EMEC)****Link to support information on website**

<http://www.emec.org.uk/>

**Type of R&D Support**

Provides test facilities for wave and tidal devices.

**Description of the support**

EMEC is an accredited test and research centre for wave and tidal stream devices based in Orkney, off the north coast of mainland Scotland. It provides developers with the opportunity to test full-scale prototype devices in high energy wave and tidal environments. In addition to full scale test sites there are also nursery sites for testing of small scale prototypes.

**Agency Responsible for Support**

EMEC

<http://www.emec.org.uk/>

**Maximum and minimum funding available**

Rather than providing funding this is testing enabler scheme.

**Is this Specific to Renewable Energy businesses?**

Yes

**Is this a local, regional or national support?**

Although the test centre is based in Orkney it has been used by many developers (including international).

**Other useful/relevant information**

As a result of EMEC there has been substantial growth in Orkney based around or stemming from the marine energy industry (including enterprises set up for servicing devices).

---

**SMART: Scotland****Link to support information on website**

<http://www.scottish-enterprise.com/services/develop-new-products-and-services/smart-scotland/overview>

**Type of R&D Support**

Provides grants to SMEs to help undertake technical feasibility studies and research and development (R&D) projects that have a commercial endpoint.

## Description of the support

### Feasibility studies

Supports up to 70% of the eligible costs for a small SME and up to 60% of the eligible costs for a medium SME:

- A Small SME has less than 50 employees and a turnover of less than €10m
- A Medium SME has 50-250 employees and a turnover of less than €50m

Studies must last between 6 and 18 months, and the maximum grant is £100,000. One third of the grant is paid upfront when the project starts. The remainder is paid quarterly in arrears against claims submitted.

### R&D Projects

This covers projects that aim to develop a pre-production prototype of a new product or process. Support is available at up to 35 per cent of the eligible project costs. Projects must last between 6 and 36 months, and the maximum grant is £600,000. The grant is paid quarterly in arrears and minimum total project cost is £75,000.

## Agency Responsible for Support

Scottish Enterprise

<http://www.scottish-enterprise.com/services/develop-new-products-and-services/smart-scotland/overview>

## Maximum and minimum funding available

For feasibility maximum £100k, for R&D £600k

## Is this Specific to Renewable Energy businesses?

No

## Is this a local, regional or national support?

Regional (Scotland only)

---

## Social and Community supports

### Community And Renewable Energy Scheme (CARES)

#### Link to support information on website

<http://www.gov.scot/Topics/Business-Industry/Energy/Energy-sources/19185/Communities/CRES>

#### Type of Social Enterprise/Community Enterprise Support (be specific)

For the development of locally-owned renewable energy projects which provide wider community benefits.

## Description of the support

The scheme is aimed at renewable projects that offer significant community engagement and benefit, providing loans towards the high risk, pre-planning consent stages of renewable energy projects. The Scottish Government's Community Energy Policy Statement and Good Practice for community benefit and shared ownership means all CARES applications require a degree of community ownership.

## Agency Responsible for Support

Local energy Scotland <http://localenergyscotland.org/>

**Maximum and minimum funding available**

Up to £150,000

**Is this Specific to Renewable Energy businesses?**

Yes but only locally-owned ones

**Is this a local, regional or national support?**

Regional (Scotland only)

---

**Community Energy Scotland****Link to support information on website**

<http://www.communityenergyscotland.org.uk/index.asp>

Type of Social Enterprise/Community Enterprise Support

Facilitates knowledge transfer and can also provide consultancy

**Description of the support**

CES is a Scottish registered charity that provides support throughout the process of community renewable energy developments. The charity is member based and facilitates knowledge transfer through partners.

**Agency Responsible for Support**

Community Energy Scotland

**Maximum and minimum funding available**

N/A

**Is this Specific to Renewable Energy businesses?**

Yes

**Is this a local, regional or national support?**

Regional (Scotland only)

---

**Local Energy Challenge Fund****Link to support information on website**

<http://www.localenergyscotland.org/funding-resources/funding/local-energy-challenge-fund/>

**Type of Social Enterprise/Community Enterprise Support**

Capital support

**Description of the support**

The Local Energy Challenge Fund aims to support large-scale local low carbon demonstrator projects which show a local energy economy approach linking local energy generation to local energy use. This includes projects looking to develop innovative energy distribution and storage solutions that have an overall aim of creating more local value and benefit.

Projects which are funded through the Local Energy Challenge Fund should be able to demonstrate:

- Partnership and collaborative working
- Innovation
- Added Local Value

**Agency Responsible for Support**

Local Energy Scotland

**Maximum and minimum funding available**

£500k-£6m per project

**Is this Specific to Renewable Energy businesses?**

Yes

**Is this a local, regional or national support?**

Regional (Scotland only)

---

**Local Energy Scotland****Link to support information on website**

<http://www.localenergyscotland.org>

**Type of Social Enterprise/Community Enterprise Support (be specific)**

Advice

**Description of the support**

Offers a range of support for community and social enterprises who want to develop renewables. This includes information on renewable technologies and information on how to apply for funding.

**Agency Responsible for Support**

Local Energy Scotland

**Maximum and minimum funding available**

N/A

**Is this Specific to Renewable Energy businesses?**

Yes

**Is this a local, regional or national support?**

Regional (Scotland only)

---

**Other Types of Support****Contracts for Difference****Link to support information on website**

<https://www.gov.uk/government/collections/electricity-market-reform-contracts-for-difference>

**Type of Support**

Payment for generating renewable electricity.

### Description of the support

A Contract for Difference (CFD) is a private law contract between a low carbon electricity generator and the Low Carbon Contracts Company (LCCC), a government-owned company. A generator party to a CFD is paid the difference between the 'strike price' – a price for electricity reflecting the cost of investing in a particular low carbon technology – and the 'reference price' – a measure of the average market price for electricity in the GB market.

To win a contract for difference renewable schemes have to bid against each other.

Contracts for Difference are the main source of subsidy for renewable projects greater than 5 MW

### Agency Responsible for Support

Department of Energy and Climate Change through the Low Carbon Contracts Company  
<https://lowcarboncontracts.uk/>

### Maximum and minimum funding available or maximum value of funding if in kind (or alternative measure)

Depends on several factors including renewable type and the contract decided. Less mature renewables are paid more. The payments are given per MWh of electricity generated. Project under 5 MW go through the feed-in tariff approach instead. There is no maximum project size.

### Is this Specific to Renewable Energy businesses?

No, all low carbon forms of generation are eligible

### Is this a local, regional or national support?

National

### Other useful/relevant information

This scheme is the replacement of the UK Government's old Renewable Obligation Certificate support scheme for large renewable projects.

## Feed-in tariff

### Link to support information on website

<https://www.gov.uk/feed-in-tariffs/overview>

### Type of Support

Payment for electricity above the market price.

### Description of the support

If an application is successful a set amount for each unit (kWh) of electricity generated is paid. The rates vary depending on:

- the size of system
- technology type
- when the system was installed
- for household projects how energy efficient the house is

The feed-in tariff is the main support mechanism for renewable projects under 5 MW in size.



**Agency Responsible for Support**

Department of Energy and Climate Change <https://www.gov.uk/government/organisations/department-of-energy-climate-change>

**Maximum and minimum funding available or maximum value of funding if in kind (or alternative measure)**

No minimum project size, maximum of 5 MW. Tariff depends on type of renewable, for example wind gets less than solar PV.

**Is this Specific to Renewable Energy businesses?**

Yes

**Is this a local, regional or national support?**

National

**Other useful/relevant information**

The feed-in tariff system has seen dramatic changes (i.e. massive cuts), as a result the ability of many schemes to be profitable is now dramatically reduced and many companies particularly in the solar sector have gone out of business.

---

**Renewable Heat Incentive (RHI)****Link to support information on website**

For non-domestic users <https://www.ofgem.gov.uk/environmental-programmes/non-domestic-renewable-heat-incentive-rhi>

**Type of Support**

Payments based on the amount of renewable heat generated

**Description of the support**

The RHI is a government environmental programme that provides financial incentives to increase the uptake of renewable heat by businesses, the public sector and non-profit organisations.

Eligible installations receive quarterly payments over 20 years based on the amount of heat generated. It is the major support mechanism in place for renewable heat, being the equivalent of what the feed-in tariff is for electricity.

**Agency Responsible for Support**

OFGEM

<https://www.ofgem.gov.uk/>

**Maximum and minimum funding available or maximum value of funding if in kind (or alternative measure)**

Provides additional income for 20 years, this income depends on the amount of heat generated

**Is this Specific to Renewable Energy businesses?**

Available to any business which uses heating

**Is this a local, regional or national support?**

National



Northern Periphery and  
Arctic Programme

2014–2020



EUROPEAN UNION

Investing in your future  
European Regional Development Fund



# GREBE

Generating Renewable Energy  
Business Enterprise

@ GREBE\_NPA

f GREBEProject

Visit

[www.grebeproject.eu](http://www.grebeproject.eu)

## Contact

Western Development Commission,  
Dillon House, Ballaghaderreen,  
Co. Roscommon, F45 WY26, Ireland.

Tel: +353 (0)94 986 1441

Email: [paulineleonard@wdc.ie](mailto:paulineleonard@wdc.ie)

## Project Partners

GREBE will be operated by eight partner organisations across six regions:



## About GREBE

GREBE is a €1.77m, 3-year (2015-2018) transnational project to support the renewable energy sector. It is co-funded by the EU's Northern Periphery & Arctic (NPA) Programme. It will focus on the challenges of peripheral and arctic regions as places for doing business, and help develop renewable energy business opportunities provided by extreme conditions.

