

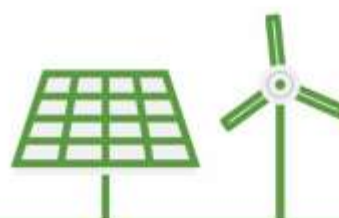


GREBE

Generating Renewable Energy
Business Enterprise



Northern Periphery and
Arctic Programme
2014-2020



Business Supports Catalogue for Renewable Energy Enterprises (Updated) November 2017



www.grebeproject.eu

The GREBE Project	6
What is GREBE?	6
Why is GREBE happening?	6
What does GREBE do?	6
The GREBE Business Supports Catalogue	7
Finland	8
Financial Support (grants, loans, equity investment)	10
Feed-in tariff	10
Energy support	11
The Rural Development Programme for Mainland Finland	112
EIP – European Innovation Partnership (Rural Innovations)	12
Horizon 2020 for SMEs	13
A Startup Grant	134
Young Innovative Companies (YIC) Funding	14
Finnvera Loans	15
Start Guarantee	17
Finnvera Guarantee	18
Internationalisation Guarantee	18
Export Guarantee	19
Environmental Guarantee	20
Taxation or welfare supports or concessions for businesses	21
Soft supports e.g. mentoring, training, specialist advice, networks	21
Enterprise Finland	21
Business Mentors	21
Product Track	22
Yrityspörssi (portal to sell/buy business enterprises)	23
Business Transfer Support	23
Franchising support	24
Training for entrepreneurs	24
Qualification for an Entrepreneur	25
Business advisory and development services	25
RE and Business Training and Expert Services	26
Entrepreneurship and Innovation Services of University of Eastern Finland	26
Business Incubator	27
Joensuu Science Park Business Development Services	28
Research and Development Supports	28
VTT services	28
LUKE services	29
Social and Community supports (focused on not for profit)	29
Support for recruitment/Pay subsidy	29
Other	30
Start Me Up – Business Idea Competition	30
Draft Programme	30
Iceland	31
Financial Support (grants, loans, equity investment)	33
Energy Fund	33
Geothermal prospecting	33
Rannsóknarstyrkir Orkusjóðs (National energy authority research grants)	34
Grants for district heating	34
Frumkvóðlasjóður Íslandsbanka	35

Átak til atvinnusköpunar	35
Tækniþróunarsjóður (Technology Development fund)	36
Icelandic student Innovation fund	37
Uppbyggingarsjóður (structural fund for each region in Iceland)	37
Taxation or welfare supports or concessions for businesses	38
Skattafrádráttur rannsókna- og þróunarverkefna	38
Soft supports	39
Start up energy	39
Konur í orkumálum – Women Network in Energy	39
Samband sveitarfélaga á köldum svæðum –	40
Iceland geothermal	40
Research and Development supports	41
Icelandic Research Fund	41
Other	42
Incubation spaces	42
Ireland	43
Financial Support (grants, loans, equity investment)	45
Micro Enterprise Loan Fund	45
Credit Guarantee Scheme	45
Strategic Banking Corporation of Ireland (SBCI) - Investment and Working Capital Loans	46
Strategic Banking Corporation of Ireland (SBCI) - Refinance of Exiting Banks	47
Strategic Banking Corporation of Ireland (SBCI) - Leasing and Hire Purchase	47
Seed & Venture Capital Programme	49
Competitive Start Fund	50
Priming grants	50
Business Expansion Grant	51
Feasibility/Innovation Grant	51
Microfinance LEO Loans	52
REFIT Schemes and Supports	53
REFIT 1	53
REFIT 2	53
REFIT 3	53
New Renewable Electricity Support Schemes	54
Competitive Feasibility Fund	54
Western Investment Fund for SMEs	55
Business Angel Finance	55
Innovative HPSU Fund (Equity)	56
Taxation or welfare supports or concessions for businesses	56
Startup Relief for Entrepreneurs (SURE)	56
Employment and Investment Scheme	57
Tax Relief for new start-up companies	57
Research & Development Tax Credits	58
VAT measures to reduce burden on SMEs	58
The Back to Work Enterprise Allowance (BTWEA) scheme	59
JobsPlus	59
Soft supports e.g. mentoring, training, specialist advice, networks	60
Accelerate Management Development Programme	60
Access to EU Programmes, EU Finance and EU Markets	60
Horizon 2020 Supports	61
New Frontiers Entrepreneur Development Programme	61
Training Networks Programme (TNP)	62
Management Works Programme	62
Trade Accelerator Vouchers	63
Start Your Own Business Programme	63

Tendering Supports	64
HPSU Feasibility Study Grant	64
SEAI Energy Advice and Mentoring	65
SME Support Tool	65
Research and Development supports	66
Ocean Energy Prototype Development Fund	66
Innovation Voucher for start-up companies	67
Innovation Partnership Grant Programme	68
Employment Supports	68
EURES	68
The EmployAbility Service	69
The Wage Subsidy Scheme	69
Work Place Supports	70
Other- e.g. Incubation space or office space	70
Enterprise Space / Incubation space	70
Northern Ireland	72
Financial Support (grants, loans, equity investment)	74
Invest NI	74
Intertrade Ireland	75
Soft supports e.g. mentoring, training, specialist advice, networks	76
Northern Ireland Renewables Industry Group	76
Carbon Trust	77
CAFRE – College of Agriculture, Food & Rural Development	78
Invest NI Innovation Vouchers	78
Research and Development Supports	78
Tech Start Up	79
Social and Community supports (focused on not for profit)	80
Action Renewables	80
Norway	81
Financial Supports	83
Start UP Grants	83
Business Loans	84
Narvik Capital	84
Forte Narvik	85
Norinnova Invest	85
Equity Investment	86
Venture Capital Investment	86
Taxation for businesses	87
Green Certificates	87
Welfare supports for businesses	87
Enova-Projects	87
National Investment Support	88
Concessions for businesses	88
Concessions for Hydro Power Plants	88
Concessions for Small Hydro Power Plants	89
Soft supports	90

Innovation Norway – Mentoring Programme	90
Norwegian Solar Energy Society	90
Research and Development supports	91
UIT – Arctic University, Technology Department	91
NORUT NARVIK	91
Social and Community supports (focused on not for profit t in RE area)	92
Other	92
SIVA INCUBATOR	92
Scotland	93
Financial Supports	95
UK Green Investment Bank plc (GIB)	95
Scottish Innovative Foundation Technologies fund	95
InnovFin Energy Demo Projects	966
EIB - European Fund for Strategic Investments (EFSI)	97
District Heating Loan Fund	98
Resource Efficient Loans SME Loans	98
Scottish Investment Bank	99
Highland Venture Capital	100
Taxation or welfare supports or concessions for business	100
Enterprise Investment Scheme	100
Seed Enterprise Investment Scheme	101
Low Carbon Heat Expert Support	102
High Growth Start Up	103
Soft supports e.g. mentoring, training, specialist advice, networks	102
Low Carbon Skills Fund	103
Scottish Enterprise 2015 – 2018 Business Plan	104
Marine Energy Parks	104
Scotland's International Technology and Renewable Energy Zone (ITREZ)	105
Research and Development supports	106
European Marine Energy Centre (EMEC)	106
SMART: Scotland	106
Social and Community supports	1079
Community And Renewable Energy Scheme (CARES)	109
Community Energy Scotland	110
Local Energy Scotland	110
Highlands & Islands Shared Ownership Support	111
Low Carbon Infrastructure Transition Programme (LCITP)	112
CARES plus	112
Scottish Communities Development Centre (SCDC) Community Support	113
Other Types of Support	1113
Contracts for Difference	113
Feed-in tariff	114
Renewable Heat Incentive (RHI)	115
Circular Economy Investment Fund	116
Innovate Your Business Support by HIE	116
Start Global Programme	117
Scotedge	118

The GREBE Project

What is GREBE?

GREBE (Generating Renewable Energy Business Enterprise) is a €1.77m, 3-year (2015-2018) transnational project to support the renewable energy sector. It is co-funded by the EU's Northern Periphery & Arctic (NPA) Programme. It focuses on the challenges of peripheral and arctic regions as places for doing business, and helps develop renewable energy business opportunities in areas with extreme conditions.

The project partnership includes the eight partners from six countries, Western Development Commission (Ireland), Action Renewables (Northern Ireland), Fermanagh & Omagh District Council (Northern Ireland), Environmental Research Institute (Scotland), LUKE (Finland), Karelia University of Applied Sciences (Finland), Narvik Science Park (Norway) and Innovation Iceland (Iceland).

Why is GREBE happening?

Renewable Energy entrepreneurs working in the NPA area face challenges including a lack of critical mass, dispersed settlements, poor accessibility, vulnerability to climate change effects and limited networking opportunities.

GREBE will equip SMEs and start-ups with the skills and confidence to overcome these challenges and use place based natural assets for RE to best sustainable effect. The renewable energy sector contributes to sustainable regional and rural development and has potential for growth.

What does GREBE do?

GREBE supports renewable energy start-ups and SMEs:

- To grow their business, to provide local jobs, and meet energy demands of local communities.
- By supporting diversification of the technological capacity of SMEs and start-ups so that they can exploit the natural conditions of their locations.
- By providing RE tailored expert guidance and mentoring to give SMEs and start-ups the knowledge and expertise to grow and expand their businesses.
- By providing a platform for transnational sharing of knowledge to demonstrate the full potential of the RE sector by showcasing innovations on RE technology and strengthening accessibility to expertise and business support available locally and in other NPA regions.
- To connect with other renewable energy businesses to develop new opportunities locally, regionally and transnationally through the Virtual Energy Ideas Hub.
- By conducting research on the processes operating in the sector to improve understanding of the sector's needs and make the case for public policy to support the sector.

For more information, visit our website:

<http://grebeproject.eu/>

Follow our Blog:

<https://greberenewableenergyblog.wordpress.com/>

Like us on Facebook:

<https://www.facebook.com/GREBEProject/>

Follow us on Twitter:

https://twitter.com/GREBE_NPA

The GREBE Business Supports Catalogue

This GREBE Business Supports Catalogue has been developed following a review of Renewable Energy business support funding mechanisms and funding options available to support the development of renewable businesses in the NPA region.

It provides information on the funding mechanisms currently available in the partner regions (Finland, Iceland, Ireland, Northern Ireland, Norway and Scotland). The information will be useful to both funding agencies (e.g. business support agencies and municipalities) and to SMEs giving details of funding options available in their regions.

The main focus is on public body support for renewable businesses but both private sector and social investment options have been included where appropriate. The supports included are for SMEs and Micro businesses but also include options for those SMEs expected to grow rapidly (e.g. High Potential Start Ups).

The business support funding mechanisms considered vary from standard 'hard' business support options (e.g. loans and venture capital) to softer supports (e.g. innovation schemes, business partner search supports etc.)

The catalogue is organised by GREBE partner region in the following order:

- Finland
- Iceland
- Ireland
- Northern Ireland
- Norway
- Scotland

A short introduction on the methods and types of supports in each partner region is provided. Information for each partner region is then organised under the following categories:

- Financial Support (grants, loans, equity investment)
- Taxation or welfare supports or concessions for businesses
- Soft supports e.g. mentoring, training, specialist advice, networks
- Research and Development Supports
- Social and Community supports (focused on not for profit)
- Other- e.g. Incubation space or office space etc.

Within each of these categories there is considerable variation in the ways different funding options are implemented and these differences will impact on the success of schemes. We hope that by using this catalogue those who seeking funding and support for renewable businesses will have a clear portfolio of options which are available to them.

In the future the information in this catalogue will be used to create a web based tool allowing users to search for available funding options and to consider different types of funding available in each region. This will be available at the GREBE project website <http://grebeproject.eu/> in August 2016. This catalogue is one of the deliverables of the GREBE Project.

Deliverable: 3.2.1

A PDF catalogue of funding options available to renewable businesses in partner regions (this will be made available on the GREBE website)



GREBE

Generating Renewable Energy
Business Enterprise

www.grebeproject.eu

Finland



Northern Periphery and
Arctic Programme
2014-2020



Finland

What kind of agencies offer support to SMEs?

In Finland, the business supports of renewable energy are largely governed by the state, regional authorities, and public sectoral agencies. Local business development companies, owned by the municipalities, link SMEs to the public support programmes. Universities and research organisations provide research and development services and number of associations operate in specific themes and offer soft supports.

Is it clear to the SME where they should go for support?

The first contact for SMEs is usually local development company operating in a district (sub region) level. They provide support in business planning and development, and link companies to the regional authorities and sectoral agencies and funding sources/programmes. Many companies are also members of the business associations that can advise them in finding the most relevant supports.

Is there one agency which is the first place for businesses to go?

Enterprise Finland, governed by the Ministry of Employment and the Economy, has established a business support portal (<http://www.yrityssuomi.fi/en>). It provides necessary background information on business establishment, funding sources, business routines (taxation, permits, audits, employer obligations etc.) and contacts to the supporting agencies.

Are business supports restricted to certain types of business, or enhanced for certain types of SMEs (e.g. only available for manufacturing or for exporters)?

Business supports are mostly generic, not focused on certain types of businesses. Financial supports focus much on the business establishment phase and reaching the business growth through internationalisation or product/service development.

Are there special supports for RE businesses?

RE businesses have tailored financial supports: energy support (Centres for Economic Development, Transport and the Environment), and feed-in-tariff (Energy Authority). In addition, RDI (Research, Development and Innovation) activities are supported through the EU funding programmes. Soft supports (advisories, training, development programmes, mentoring) have often thematic contents but are available for all sectors.

Business supports available in Finland are described in more detail in the coming pages under the following themes:

- Financial Support (grants, loans, equity investment)
- Taxation or welfare supports or concessions for businesses
- Soft supports e.g. mentoring, training, specialist advice, networks
- Research and Development supports
- Social and Community supports (focused on not for profit)
- Other- e.g. Incubation space or office space

Financial Support (grants, loans, equity investment)

Feed-in tariff

Link to support information on website

<http://www.energiavirasto.fi/en/web/energy-authority/feed-in-tariff>

Type of Finance Support

A production subsidy

Description of the support

The feed-in tariff is a financial support and steering mechanism established to increase the RE production. The feed-in tariff is available for wind, biogas and wood fuel power plants. The tariff comprises the target price 83.50 €/MWh less the three-month mean market price of electricity. The feed-in tariff payable to timber chip power plants is determined according to the three-month mean price of emission rights and the energy tax on peat.

The tariff is based on the legislation provided here:

<http://www.energiavirasto.fi/en/web/energy-authority/legislation1>

Agency Responsible for Support

Energy Authority

<https://www.energiavirasto.fi/en/web/energy-authority/>

Maximum and minimum funding available

Tariff depends on the target price and average three-month market price of electricity. The system is temporary, until the combined capacity of the generators is exceeded. (Wind 2500 MVA, biogas 19 MVA, wood fuels 150 MVA or 50 generators).

Is this Specific to Renewable Energy businesses?

For RE producers (wind power, biogas, wood fuel power plants)

Is this a local, regional or national support?

National

Other useful/relevant information

<http://www.energiavirasto.fi/documents/10179/0/Feed-in+tariff+summary+1.1.2015.pdf/2de0797f-40ca-4dcd-854a-5b0ea88f1d2e>

SATU system (in Finnish) lists all plants receiving this support.

Energy support

Link to support information on website

<http://tem.fi/en/energy-aid>

Type of Finance Support

A state grant for investments and related research projects

Description of the support

The energy support is a state grant for investments in RE production facilities and research projects related to it. Grants are available for projects, which promote the use or production of renewable energies, advance energy efficiency and reduce the environmental effects caused by energy production and use. Regulation No. 1063/2012). At least 25% of the projects' financing must come from non-governmental funds. Energy aid may be granted to companies, municipalities and other communities.

Agency Responsible for Support

The Ministry of the Employment and the Economy. Funding is allocated via local Centres for Economic Development, Transport and the Environment.

<http://tem.fi/en/energy-aid>

Maximum and minimum funding available

Funding rates differ: Energy audits up to 50%; new technology (RE production, use and energy efficiency) investments up to 40%; conventional technologies up to 30%; reducing the environmental impacts of energy production and use up to 30%.

However, the typical support rates have been 10-20% for conventional technologies and 20-30% for the new technologies.

Is this Specific to Renewable Energy businesses?

RE businesses but also for municipalities and communities.

Is this a local, regional or national support?

National

The Rural Development Programme for Mainland Finland

Link to support information on website

<https://www.maaseutu.fi/en/rural-development-programme/Pages/default.aspx>

Type of Support

Development funding programme

Description of the support

Structural funds for both public and private sectors

The three focus areas are the following:

1. Promote bioeconomy and, as part of it, agriculture that is economically, socially and ecologically sustainable and ethically acceptable.
2. Diversify rural industries and create employment by improving the competitiveness of businesses, supporting new entrepreneurship and promoting the networking of companies.
3. Improve vitality and quality of life in rural areas by strengthening independent local activities

Agency Responsible for Support

The strategy is coordinated by the rural development unit of the Ministry of Agriculture and Forestry. Funding is allocated via local Centres for Economic Development, Transport and the Environment.

<https://www.ely-keskus.fi/en/web/ely-en/>

Maximum and minimum funding available or maximum value of funding if in kind (or alternative measure)

Depends on the project type

Is this Specific to Renewable Energy businesses?

Not only, but provides good opportunities for diversifying/supporting rural businesses with RE solutions

Is this a local, regional or national support?

National programme with regional allocation

EIP – European Innovation Partnership (Rural Innovations)

Link to support information on website

https://www.maaseutu.fi/en/Rural_Innovations/Pages/default.aspx

Type of Support

Structural funding for innovation groups (part of EIP-Agri)

Description of the support

The measure aims to create an optimal setting for developing innovations that promote agriculture and forestry by making the best possible knowledge and expertise available for the group developing the innovation, ensuring that an idea, once suggested, can be turned into a deployable innovation. The business potential of the innovation to be developed is an important element of the selection criteria. While the project may also be associated with investments in agriculture or food production, these will be realised as separate projects, and their potential eligibility for support will be determined on the grounds of the relevant support scheme's principles. The support level may be increased by 20% at maximum if the project has no links to the operation of a rural innovation group. The project may also involve international co-operation.

The beneficiary is the responsible implementer of the project, which may be an organisation under public or private law, including an SME, a research unit or a development organisation, a foundation, an educational institution, a municipality or an association that assumes responsibility for project implementation. The group must contain at least one entrepreneur of primary production.

Agency Responsible for Support

Centre for Economic Development, Transport and the Environment.

<https://www.ely-keskus.fi/en/web/ely-en/>

Maximum and minimum funding available or maximum value of funding if in kind (or alternative measure)

Additional support; the support level may be increased by 20% at maximum if the project has no links to the operation of a rural innovation group.

Is this Specific to Renewable Energy businesses?

No, but has good relevance for RE

Is this a local, regional or national support?

EIP-Agri is EU –level instrument, this is Finnish implementation of EIP-Agri.

Horizon 2020 for SMEs**Link to support information on website**

<http://www.tekes.eu/en/horizon-2020/>

Type of Support

Research and development funding

Description of the support

EU –level funding programme for research and development, SME funding instruments

Agency Responsible for Support

In Finland, support for SME involvement in Horizon 2020 is coordinated by the TEKES (The Finnish Funding Agency for Innovation); <http://www.tekes.eu/en/horizon-2020/>

Maximum and minimum funding available or maximum value of funding if in kind (or alternative measure)

Depends on the call/application, but e.g. there has been opportunities to apply 75% support between €50,000 and €2,500,000.

Is this Specific to Renewable Energy businesses?

No

Is this a local, regional or national support?

International/national

A Start-up Grant

Link to support information on website

http://www.teservices.fi/te/en/employers/for_entrepreneurs/services_new_entrepreneurs/startup_grant/index.html

Type of Finance Support

Grant for new entrepreneurs

Description of the support

The purpose of start-up grants is to encourage new businesses and promote employment. The grant provides an entrepreneur with a secure income during the time that getting the business up and running is estimated to take – however for no more than 18 months.

Agency Responsible for Support

TE-Services (public employment and business services)

<http://www.te-services.fi/te/en/index.html>

Maximum and minimum funding available

The start-up grant consists of:

- a basic grant, which amounted to €32.80 a day in 2015
- a supplementary grant, the amount of which is decided case by case at the discretion of the TE Office
- the supplementary amount may not exceed 60 per cent of the basic grant amount

Is this Specific to Renewable Energy businesses?

No

Is this a local, regional or national support?

National, allocated via regional and local offices

Young Innovative Companies (YIC) Funding

Link to support information on website

<http://www.tekes.fi/en/funding/yic/funding/>

Type of Finance Support

Grant/Loan

Description of the support

Tekes offers funding for young, innovative companies for comprehensive development of their business activities. Company may be eligible for the funding if:

- it has opportunity for fast growth in international markets,
- evidence of promising business activities and customer references,
- a clear plan to grow in international markets, and the capacity to implement the plan,
- a competitive edge with which it is possible to attain an important market position,
- a committed and competent management team,
- the ability attract venture capital

Agency Responsible for Support

TEKES (www.tekes.fi/en/funding)

Maximum and minimum funding available

The maximum amount of Tekes funding for young, innovative companies amounts to €1.25 million, of which a maximum of €500,000 may be funded as a grant, and €700,000 as a loan.

Tekes funds 75 percent of the eligible project costs in at least three phases. The funding for the first phase is a €250,000 grant; typically for the period of 6-12 months. The funding is granted for business development.

Tekes sets goals for the company in its funding decision, which, if realised, enable the company to move on to the next phase of funding.

Is this Specific to Renewable Energy businesses?

No

Is this a local, regional or national support?

National

TEKES Funding for Start-ups and SMEs**Link to support information on website**

<https://www.tekes.fi/en/funding/>

Type of Finance Support

Grant/Loan

Description of the support

Tekes offers funding for start-ups and SMEs:

- Funding services for innovation activities
- Funding for growth
- Market knowledge and networks

Agency Responsible for Support

TEKES (www.tekes.fi/en/funding)

Maximum and minimum funding available

The funding rates and maximum vary between the types of support. Typically, the funding rate is between 70-75% of the project costs.

Is this Specific to Renewable Energy businesses?

No

Is this a local, regional or national support?

National

Finnvera Loans**Link to support information on website**

<https://www.finnvera.fi/eng/products/loans>

Type of Finance Support

Loans (portfolio)

Description of the support

Finnvera has a portfolio of loans, which have been developed to cover the financing needs in all stages of an enterprise. Loans include:

Finnvera Loan:

A Finnvera Loan (previously named Investment and Working Capital Loan) is intended **for newly established and existing small and medium-sized enterprises**. It can be used to finance domestic construction, machinery and equipment investments, energy and environment projects, working capital needs, and various ownership arrangements.

Entrepreneur Loan:

An Entrepreneur Loan is a personal loan to an entrepreneur and it can be used to finance investments in the share capital of a limited company and/or in the fund of invested unrestricted shareholder's equity. An Entrepreneur Loan can also be used to finance purchases of shares of an existing limited company.

The target enterprise may operate in any sector except farming, forestry or building developer's business. The enterprise must meet the criteria set by the EU for SMEs and it must have the prerequisites for profitable business.

An Entrepreneur Loan can be granted to a shareholder of a limited company who's holding of the share capital and votes will be at least 20 per cent after completion of the investment or the transaction financed by means of the loan.

The loan can also be granted to several founders or shareholders in the same enterprise. The maximum loan per borrower is 100,000 euros. The borrower must personally put up a self-financing portion of at least 20 per cent.

Internationalization Loan:

The Internationalization Loan is intended for financing the business operations of a Finnish SME abroad. The loan may be used when a subsidiary or an affiliated company abroad needs funding for investment, development or growth. The loan can also be used to acquire or increase a holding, or to raise the share capital, in a subsidiary or in an affiliated company abroad. After the investment, the borrower must usually hold at least 1/5 of the voting rights in the company.

To be eligible for financing, the subsidiary or affiliated company abroad must primarily engage in production, assembly, maintenance or service. Financing cannot be granted merely for the establishment or expansion of a foreign sales office or for exports.

Enterprises with fewer than 250 employees that have an annual turnover not exceeding 50 million euros or an annual balance-sheet total not exceeding 43 million euros can apply for an Internationalization Loan.

Bridge finance for the period preceding the payment of grants:

Bridge financing means a loan granted by Finnvera to meet a company's need for working capital during the period between a positive grant decision made by a Centre for Economic Development, Transport and the Environment (ELY Centre) or Tekes (the Finnish Funding Agency for Innovation) and the actual payment of the grant. ELY Centre's grant applicants may apply for bridge financing only if the grant they are applying for is a development grant.

A prerequisite for a loan by Finnvera is that Tekes or an ELY Centre has made a positive grant decision. Therefore, the Bridge Financing decision will always be made after the grant decision. The maximum loan sum is 70% of the grant; however, not more than EUR 500,000 for grants issued by Tekes.

Bond Financing

Finnvera may mark bonds issued by companies that meet the EU definition of an SME or larger companies. Bond financing by Finnvera is well suited for companies' general financing needs, such as investments, expansion and development of operations and the organisation of the financing structure.

A bond is a financing instrument in which a group of lenders or investors marks a bond issued by a company in need of a loan. The issuing of a bond is organised by banks or other parties, which charge the costs of the issuing arrangements from the issuing company. Because of their typical features and structure, bonds are best-suited for the largest financing needs.

Finnvera may mark bonds from the issue date. Finnvera may not purchase bonds on the secondary market or make investments in funds investing in bonds. Finnvera may not account for more than 50 per cent of the actual markings. No self-financing is required of the companies issuing bonds.

The markings of bonds are at market price. As part of the project assessment, Finnvera also conducts a normal enterprise analysis, which forms the basis for its participation in the project.

Growth Loan:

Finnvera can grant Growth Loans to SMEs and midcap companies for the financing of major growth or internationalisation projects and corporate restructuring.

A Growth Loan may be granted to SMEs and midcap companies which have been in operation for over three years. The Growth Loan is a debt-based mezzanine financing product. The company's self-financing portion must always be at least 20% and the share contributed to the total financing by other financiers than Finnvera must be at least 50%. Project profitability and eligibility for financing is assessed on a case-specific basis together with other financiers.

Agency Responsible for Support

Finnvera <https://www.finnvera.fi>

Maximum and minimum funding available

Presented in descriptions above.

Is this Specific to Renewable Energy businesses?

Finnvera can provide financing for enterprises in almost every sector; only farming, forestry and building developer's business remain outside our range of financing.

Is this a local, regional or national support?

National

Start Guarantee

Link to support information on website

https://www.finnvera.fi/eng/node_2686/Guarantees/Start-Guarantee

Type of Finance Support

Guarantee for new enterprises

Description of the support

Start Guarantee is intended for newly launched enterprises owned by private individuals and meet the SME definition applied by the EU. Another criterion is that no more than three years has passed since their entry into the Trade Register.

Agency Responsible for Support

Finnvera <https://www.finnvera.fi>

Maximum and minimum funding available

Finnvera's guarantee coverage can be at most 80 %. However, the total sum of Start Guarantees granted to one enterprise may not exceed EUR 80,000.

Is this Specific to Renewable Energy businesses?

Finnvera grants guarantees to all business sectors apart from the actual farming industry, forestry and building developer's business.

Is this a local, regional or national support?

National

Finnvera Guarantee**Link to support information on website**

<https://www.finnvera.fi/eng/products/guarantees/finnvera-guarantee>

Type of Finance Support

Finnvera Guarantee is for SMEs as security for domestic financing in such areas as investments and/or working capital and business and company acquisitions.

Description of the support

Finnvera Guarantee can be used as security for loans and bank guarantees provided by banks, financing companies or insurance companies in such instruments as promissory notes, accounts with overdraft facility, credit limits, bank guarantees (delivery security and other contingent liabilities), bank guarantee limits (delivery security) and factoring financing. The financing risk is shared by Finnvera and the provider of financing. Finnvera Guarantee is usually 50 per cent of the credit or other financing commitment.

Agency Responsible for Support

Finnvera <https://www.finnvera.fi>

Maximum and minimum funding available

Usually 50 per cent of a credit or some other financial commitment.

Is this Specific to Renewable Energy businesses?

Finnvera grants guarantees to all business sectors apart from the actual farming industry, forestry and building developer's business.

Is this a local, regional or national support?

National

Internationalisation Guarantee**Link to support information on website**

<https://www.finnvera.fi/eng/products/guarantees/internationalisation-guarantee>

Type of Finance Support

The internationalisation guarantee serves as collateral for financing the business operations of a Finnish SME abroad.

Description of the support

The guarantee may be used when a subsidiary or an affiliated company abroad needs funding for investment, development or growth. The guarantee can also be used to acquire or increase a holding, or to raise the share capital, in a subsidiary or in an affiliated company abroad. After the investment, the recipient of the financing must usually hold at least 1/5 of the voting rights in the company.

To be eligible for financing, the subsidiary or affiliated company abroad must primarily engage in production, assembly, maintenance or service. Financing cannot be guaranteed merely to finance exports, in other words, it cannot be used simply to set up a sales office.

Enterprises with fewer than 250 employees that have an annual turnover not exceeding €50 million or an annual balance-sheet total not exceeding €43 million can apply for an internationalisation guarantee.

Agency Responsible for Support

Finnvera <https://www.finnvera.fi>

Maximum and minimum funding available

Finnvera's share of the total funding in an internationalisation project is negotiated separately in each case.

Is this Specific to Renewable Energy businesses?

No

Is this a local, regional or national support?

National

Export Guarantee

Link to support information on website

<https://www.finnvera.fi/eng/products/guarantees/export-guarantee>

Type of Finance Support

Export Guarantees is an instrument for covering domestic needs for collateral in exports.

Description of the support

By means of an Export Guarantee, an exporter can acquire pre-delivery or post-delivery financing for working capital from a bank. An Export Guarantee can also serve as countersecurity for a bank when a bond is given in favour of a foreign buyer (a bid bond, an advance payment bond, a performance bond or a warranty period bond).

Export Guarantees can be issued for the following purposes:

- provision of financing for pre-delivery working capital needs in export projects, such as financing for manufacturing costs and raw material purchases
- provision of financing for post-delivery working capital needs (financing to cover the buyer's payment period)
- bonds pertaining to delivery contracts (bid bonds, advance payment bonds, bonds for manufacture, delivery and warranty periods)
- export of services, installation, planning, etc. (construction companies, engineering offices)

No limits are applied to the size of eligible projects. Export Guarantees can also be issued to companies other than SMEs. In general, financing is not available for exports to subsidiaries or associated companies. However, if the exporter is a domestic parent company and the end client is a buyer outside the Group, exports may also take place via a subsidiary or an associated company.

No restrictions are placed on the business sector in export projects.

Loans and guarantees granted by Finnvera are considered to include State aid if the price an enterprise pays for the financing is lower than the reference price determined by the EU Commission. Owing to international agreements, however, export guarantees must always be priced so that they do not include aid.

Agency Responsible for Support

Finnvera <https://www.finnvera.fi>

Maximum and minimum funding available

Finnvera's guarantee covers a maximum of 80% of a loan or other financial commitment.

Is this Specific to Renewable Energy businesses?

No

Is this a local, regional or national support?

National

Environmental Guarantee

Link to support information on website

<https://www.finnvera.fi/eng/products/guarantees/environmental-guarantee>

Type of Finance Support

Environmental Guarantees can be granted as security for credits that are used for environmental protection investments, renewable energy projects or projects improving energy efficiency.

Description of the support

Environmental Guarantee is mainly targeted for large companies throughout Finland.

Suitable uses for the guarantee are, for instance, investments improving water or air protection or the recycling of wastes, as well as renewable energy projects undertaken by companies that need financing for investments in wind power parks, biofuel facilities, thermal power plants utilising forest energy, or other similar applications. The Guarantee can however not be granted for financing that is used to manufacture the devices in aforementioned projects. For these purposes Finnvera can offer other financing products.

The guarantee can also be used for projects intended to improve energy efficiency and for the modifications, repairs or improvements required by the above-mentioned projects.

The guarantee may also be granted for an investment that is carried out abroad but involves substantial improvements to the state of the Finnish environment.

Agency Responsible for Support

Finnvera <https://www.finnvera.fi>

Maximum and minimum funding available

Finnvera's guarantee can cover at most 80 per cent of the credit sum.

Is this Specific to Renewable Energy businesses?

Yes, but targeted mainly for large companies

Is this a local, regional or national support?

National

Other useful/relevant information

Taxation or welfare supports or concessions for businesses

Finland has tax concessions for industry and professional horticulture, as well as tax refund for energy intensive industry. However, these are not directly related to RE or SMEs.

In taxation, excise duties are much based on the carbon content of fuels. However, those are not specific supports for SMEs.

Soft supports e.g. mentoring, training, specialist advice, networks**Enterprise Finland****Link to support information on website**

<https://www.yrityssuomi.fi/en/>

Type of Support

Information and service portal

Description of the support

Free of charge portal that includes information, tools and services for start-ups and existing companies for starting, growing and developing a company and advice and guidance on internationalisation.

Portal description: <https://www.yrityssuomi.fi/en/tietoa-palvelusta>

Agency Responsible for Support

Ministry of Employment and the Economy

Is this Specific to Renewable Energy businesses?

No, it is available for all sectors

Is this a local, regional or national support?

National, includes also regional information

Local offices provide a portfolio of services (establishing an enterprise, business planning and development).

The services are available locally via North Karelia Enterprise Agency ([http://pohjois-](http://pohjois-karjala.uusyrityskeskus.fi/english)

[karjala.uusyrityskeskus.fi/english](http://pohjois-karjala.uusyrityskeskus.fi/english)) and North Karelia Chamber of Commerce

(<http://www.nk.chamber.fi/en/frontpage/>)

Business Mentors**Link to support information on website**

<http://www.yrityskummit.fi/>

Type of Support

Mentoring

Description of the support

The activities of business mentors are based on voluntary work to improve the activities of SMEs, bring tacit know-how and offer support in order to relief the lack of resources in SMEs. Business Mentors offer their support and experience free of charge to SMEs. Target group: SMEs in different phases of business development and internationalisation e.g. planning import/export, penetrating new markets, creating cooperation networks and finding customers.

Company selection: All SMEs in need of different kind of assistance in home market and international business.

Business mentors work with local companies in order to support internationalisation. Mentors offer companies tacit know-how, practical advice and new networks and contacts.

Agency Responsible for Support

www.Yrityskummit.rv

Regional contact via Josek Ltd.; Karelia UAS has some earlier cooperation with the network.

Is this Specific to Renewable Energy businesses?

No, mentors have a range of expertise

Is this a local, regional or national support?

National network, with regional mentors/networks

Other useful/relevant information

Potential synergies with GREBE Entrepreneurship Enabler Scheme in Finland.

Product Track

Link to support information on website

<http://tuotevayla.fi/en>

Type of Support

Expert service / grant funding for micro-enterprises

Description of the support

Tuoteväylä - Product Track service provides advice, know-how and financing to promising inventions and innovative business ideas

Agency Responsible for Support

Centre for Economic Development, Transport and the Environment.

<https://www.ely-keskus.fi/en/web/ely-en/>

Maximum and minimum funding available

The maximum aid amount paid to companies for invention development projects accounts for 50% of approved costs.

Is this Specific to Renewable Energy businesses?

No

Is this a local, regional or national support?

National, available via regional Centres for Economic Development, Transport and the Environment.

Other useful/relevant information

Centres for Economic Development, Transport and the Environment advise companies also on other issues, such as licencing (manufacturing products of other companies).

The service was developed by the Finnish Inventions Association (Keksintösäätiö) that continues the advisory/information activities.

Yrityspörssi (portal to sell/buy business enterprises)**Link to support information on website**

<http://www.yritysporssi.fi/en>

Type of Support

Portal, information service

Description of the support

Portal includes enterprises for sale, wanted and service offers.

Agency Responsible for Support

The Federation of Finnish Enterprises

Is this Specific to Renewable Energy businesses?

No

Is this a local, regional or national support?

National

Other useful/relevant information

The Federation of Finnish Enterprises provides information/advisory for its members.

Business Transfer Support**Link to support information on website**

<http://www.omistajanvaihdosseura.fi/>

Type of Support

Association that provides Information and advisory service assisting companies in Business Transfers.

Description of the support

As above

Agency Responsible for Support

Finnish Business Transfer Society

Is this Specific to Renewable Energy businesses?

No

Is this a local, regional or national support?

National

Franchising support

Link to support information on website

<http://www.franchising.fi/etusivu>

Type of Support

Finnish Franchising Association provides Information, advisory and training services assisting entrepreneurs interested in Franchising businesses.

Description of the support

As above

Agency Responsible for Support

Finnish Franchising Association

Is this Specific to Renewable Energy businesses?

No

Is this a local, regional or national support?

National

Training for entrepreneurs

Link to support information on website

http://www.te-services.fi/te/en/employers/for_entrepreneurs/services_new_entrepreneurs/training_entrepreneurs/index.html

Type of Support

Public training service

Description of the support

Career coaching:

Includes:

- General idea of enterprising
- Practical aspects of setting up a business and working as an entrepreneur
- Surveys and assesses the participants' skills and capacities for enterprising

Entrepreneur training:

Provides basic information about:

- Entrepreneurships
- Setting up a business
- Various aspects of enterprising, including funding, marketing, communications, taxation and financial administration.
- Development of business ideas and business plans

For example, the training provides more in-depth knowledge about funding, accounting and taxation, marketing, the risks of enterprising, and acting as an employer. The aim may be to develop areas that the entrepreneur finds problematic and to promote cooperation between enterprises. The training may aim for completing a further vocational qualification for entrepreneurs or one of its modules.

Agency Responsible for Support

TE-Services (public employment and business services)

<http://www.te-services.fi/te/en/index.html>

Is this Specific to Renewable Energy businesses?

No

Is this a local, regional or national support?

National, delivered through regional and local offices

Qualification for an Entrepreneur**Link to support information on website**

<http://www.pkky.fi/hakijalle/koulutustarjonta/yhteiskuntatieteiden-liiketalouden-ja-hallinnon-ala/liiketalous-ja-kauppa/Sivut/yrittajan-ammattitutkinto.aspx>

(Only in Finnish)

Type of Support

Training

Description of the support

Training for reaching a vocational degree of an entrepreneur

Agency Responsible for Support

North Karelia Municipal Education and Training Consortium

Is this Specific to Renewable Energy businesses?

No

Is this a local, regional or national support?

Regional / national

Business advisory and development services**Link to support information on website**

http://www.pikes.fi/en_GB/web/pikes-en

<http://www.josek.fi/eng/>

<http://www.keti.fi/en/web/ketieng/>

Type of Support

Expert services

Description of the support

Business development and advisory for the companies in the region.

Agency Responsible for Support

- PIKES Ltd,
- Josek Ltd.
- Ketil Ltd.

Is this Specific to Renewable Energy businesses?

No, but there is RE expertise in each development company/centre

Is this a local, regional or national support?

Local/regional

RE and Business Training and Expert Services

Link to support information on website

<http://www.karelia.fi/en/expert-services/global-services/service-solutions/bioeconomy>

Type of Support

Training

Description of the support

Training courses/expert services in RE, such as procurement of RE solutions/ decentralised energy solutions, business development.

Course assignments, trainees and thesis works both in business and renewable energy.

Agency Responsible for Support

Karelia UAS

Is this Specific to Renewable Energy businesses?

Yes

Is this a local, regional or national support?

Local/regional

Entrepreneurship and Innovation Services of University of Eastern Finland

Link to support information on website

<http://www.uef.fi/en/web/kehittamispalvelut/entrepreneurship-and-innovation-services>

Type of Support

Information / research transfer into business (in connection to the UEF R&D activities)

Description of the support

Entrepreneurship and Innovation Services is an organisation of experts supporting and promoting the commercialisation of research findings and expertise emerging from the University of Eastern Finland. We work in cooperation with the university's research groups and business and industry in evaluating the commercial potential of research, and we facilitate knowledge transfer to support the birth of new business activities and entrepreneurship.

Our services range from the promotion of innovation skills to invention disclosure activities, from the planning of commercially-oriented research projects to their implementation, from utilisation assessments of innovation ideas to the protection of immaterial property rights and technology transfer for commercial use. We also serve as a link connecting our researchers and aspiring entrepreneurs with business and industry, regional and national development and mediator organisations, and funders of start-up companies

Agency Responsible for Support

University of Eastern Finland (www.uef.fi)

Is this Specific to Renewable Energy businesses?

No

Is this a local, regional or national support?

Regional/National

Business Incubator

Link to support information on website

http://en.tiedepuisto.fi/business_development/business_incubator

Type of R&D Support

Business incubator, expert services

Description of the support

The business incubator helps in implementing the business idea and guides companies through the challenging early years into a growth path. Pre-incubator assists in developing the competence, finding the required expertise, customer contacts, partners, financing opportunities, as well as compiling a functional business model. Basing on the business model, incubator services cooperate with entrepreneur in establishing a comprehensive business plan. The pre-incubator is followed by the establishment of the company and actual incubator phase, where comprehensive support and supporting environment is provided for starting up the business.

The business incubator cooperates closely with the University of eastern Finland and Karelia UAS to provide support in each specific area, such as making international contacts.

Agency Responsible for Support

Joensuu Science Park

<http://www.tiedepuisto.fi/frontpage>

Is this Specific to Renewable Energy businesses?

No

Is this a local, regional or national support?

Regional

Joensuu Science Park Business Development Services

Link to support information on website

http://en.tiedepuisto.fi/business_development

Type of Support

Experts / business support

Description of the support

Joensuu Science Park provides a portfolio of expert services in business development, including:

- Situational analyses
- Business strategy services
- Product development and innovation services
- Services for developing marketing, sales and communications
- Services for improving processes, productivity and management
- Road to internationalisation

Services descriptions available at: http://www.tiedepuisto.fi/business_development

Agency Responsible for Support

Joensuu Science Park

<http://www.tiedepuisto.fi/frontpage>

Is this Specific to Renewable Energy businesses?

No, available for all sectors

Is this a local, regional or national support?

Regional/local

Research and Development Supports

VTT services

Link to support information on website

<http://www.vttresearch.com/services>

Type of Support

Research and Development Support /Cooperation

Description of the support

VTT's services increase the competitiveness of our customers' businesses, promote the creation of new business, and improve and speed up R&D.

We offer our customers access to our cross-disciplinary technological and business expertise, unique research infrastructure, and comprehensive partnership networks. We create customized solutions in close co-operation with our customers.

Agency Responsible for Support

VTT (VTT Technical Research Centre of Finland Ltd.)

www.vtt.fi

Is this Specific to Renewable Energy businesses?

Not only, but very relevant

Is this a local, regional or national support?

National, but available also for enterprises located in Eastern Finland

LUKE services**Link to support information on website**

<http://www.luke.fi/en/services/>

Type of Support

Research and Development Support /Cooperation

Description of the support

LUKE provides research & expert services, testing and production services, as well as IPR and commercialisation services.

Agency Responsible for Support

Natural Resources Institute Finland www.luke.fi

www.luke.fi

Is this Specific to Renewable Energy businesses?

Not only, but very relevant.

Is this a local, regional or national support?

National, office also in Joensuu & North Karelia.

Social and Community supports (focused on not for profit)**Support for recruitment/Pay subsidy****Link to support information on website**

http://www.te-services.fi/te/en/employers/find_an_employee/support_recruitment/index.html

Type of Social Enterprise/Community Enterprise Support (be specific) Social enterprises have the same support measures as private enterprises. There are some differences in getting the support for recruitment and pay subsidies. These are related to illness, disability and long-term unemployment of the person recruited. Otherwise, there are no support measures in this category.

Other

Start Me Up – Business Idea Competition

Link to support information on website

http://en.tiedepuisto.fi/startmeup_english

Type of Support

Business idea competition with following supporting measures

Description of the support

Business idea competition followed by a supporting service with business development expert services.

Agency Responsible for Support

Joensuu Science Park, number of supporting partners

Maximum and minimum funding available or maximum value of funding if in kind (or alternative measure)

1st prize €15,000

Is this Specific to Renewable Energy businesses?

No

Is this a local, regional or national support?

Local/regional

Draft Programme

Link to support information on website

<http://draft.karelia.fi/en/>

Type of Support

Grant with conditions (managed by Karelia UAS)

Description of the support

A support programme for students/staff of Karelia UAS and UEF (University of Eastern Finland) to develop new business ideas.

Agency Responsible for Support

Karelia UAS / University of Eastern Finland

Maximum and minimum funding available or maximum value of funding if in kind (or alternative measure)

€4000

Is this Specific to Renewable Energy businesses?

No

Is this a local, regional or national support?

Local/Regional

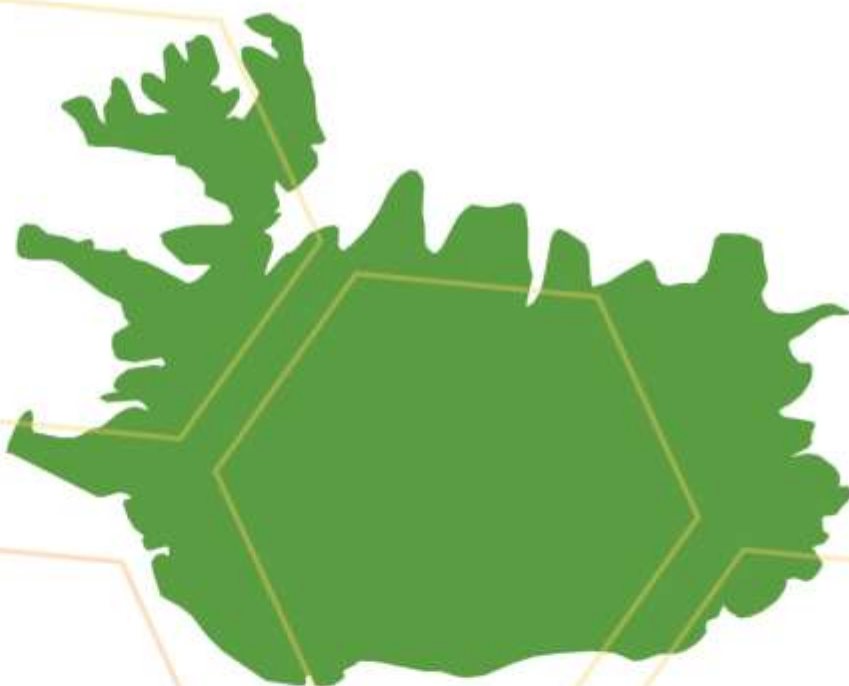


GREBE

Generating Renewable Energy
Business Enterprise

www.grebeproject.eu

Iceland



Northern Periphery and
Arctic Programme
2014-2020



Iceland

What kind of agencies offer support to SMEs?

There are few different agencies which support SMEs in Iceland e.g. ICI, development agencies in the country and other advisory and accounting offices. Each agency has a different role and focuses on businesses of different size, potential or area of focus.

There is some variety of supports for enterprise of all kinds in Iceland. These include access to finance, management development, mentoring supports, business development programs, market supports and trade promotion. Some of these supporting institutes are state supported and other private owned.

Is there one agency which is the first place for businesses to go?

In Iceland ICI plays the role of the 'first-stop-shop' support service for micro and small businesses. ICI receives revenues both from public and private partners. ICI is located in each region. ICI provides advice and direction, to anyone who wishes to start or expand a business. ICI can also provide or point out funding for projects that meet certain criteria (generally with regard to export potential) and other non-financial supports such as training and mentoring.

Local development agencies also play an important role for SMEs.

Companies with clear high growth potential can be fast-tracked to the next level of support available from ICI to help them start, grow, innovate and win export sales in global markets through Enterprise Europe Network (EEN). Promote Iceland also assists Icelandic companies seeking to grow internationally through competence building programs as well as international events, such as trade fairs, press trips, and trade delegations. This is done in close cooperation with Icelandic embassies and consulates abroad, as well as bilateral chambers of commerce. They can provide funding, links and supports for companies - from entrepreneurs with business propositions for a high potential start-up through to large companies expanding their activities, improving efficiency and growing international sales.

Is it clear to the SME where they should go for support?

It is not clear to SME's where to go for support in Iceland. SMEs can receive basic information on ICI webpage, they though need a better online tool which sets out the variety of supports available to all enterprises across all sectors.

Are business supports restricted to certain types of business, or enhanced for certain types of SMEs (e.g. only available for manufacturing or for exporters)?

There is a particular focus on research and development and on businesses with export potential.

Are there special supports for RE businesses?

Iceland is in a unique position; about 85% of total primary energy consumption in Iceland is derived from domestically produced renewable energy resource. There are specific research and development fund for RE owned by the government.

Business supports available in Iceland are described in more detail in the coming pages under the following themes:

- Financial Support (grants, loans, equity investment)
- Taxation or welfare supports or concessions for businesses
- Soft supports e.g. mentoring, training, specialist advice, networks
- Research and Development supports
- Social and Community supports (focused on not for profit)
- Other- e.g. Incubation space or office space

Financial Support (grants, loans, equity investment)

Energy Fund

Link to support information on website

<http://www.orkustofnun.is/orkustofnun/rad-og-nefndir/orkusjodur/>

Type of Finance Support

Grant

Description of the support

Provides funding for specific projects in the field of efficient energy use, including education and informative projects. The fund also provides funding for projects that promote the use of domestic energy instead of fossil fuels and strengthen international cooperation in such projects.

Agency Responsible for Support

Orkustofnun (National energy Authority)

www.orkustofnun.is

Maximum and minimum funding available

50% of cost is eligible

Is this Specific to Renewable Energy businesses?

Yes

Is this a local, regional or national support?

National support

Geothermal prospecting

Link to support information on website

<http://www.orkustofnun.is/orkustofnun/rad-og-nefndir/orkusjodur/>

Type of Finance Support

Loans

Description of the support

The main purpose of the fund is to promote the further use of geothermal energy for heating in the country with the aim of improving living conditions and increasing access to the quality and potential of geothermal entail and to reduce the use of fossil fuels for heating and reduce the cost of the subsidies (from the government) for heating in cold areas.

Agency Responsible for Support

Orkustofnun (National energy Authority)

<http://www.orkustofnun.is/>

Maximum and minimum funding available

Up to 60% of total cost

Is this Specific to Renewable Energy businesses?

Yes

Is this a local, regional or national support?

National support

Rannsóknarstyrkir Orkusjóðs (National energy authority research grants)**Link to support information on website**

<http://www.orkustofnun.is/orkustofnun/umsoknir/rannsoknarstyrkir-orkusjods/>

Type of Finance Support

Grant

Description of the support

Research grants for:

- cost-effective energy efficiency and energy saving
- domestic energy and alternative fuels and fossil fuel savings
- the acquisition of knowledge in these areas and sharing
- research, development and cooperation to this aim
- job creation in these fields

Agency Responsible for Support

Orkustofnun (National energy Authority)

www.orkustofnun.is

Maximum and minimum funding available

No

Is this Specific to Renewable Energy businesses?

Yes

Is this a local, regional or national support?

National support

Grants for district heating**Link to support information on website**

<http://www.os.is/orkustofnun/umsoknir/eingreidslur/>

Type of Finance Support

Subsidies

Description of the support

Grants for projects in renewable energy and sustainable fisheries. The goal is to support innovation in that field.

Subsidies for using green energy e.g. heat pumps with the objective to save energy and improved energy efficiency of house heating:

Agency Responsible for Support

Orkustofnun (National energy Authority)

www.orkustofnun.is

Is this Specific to Renewable Energy businesses?

Yes

Is this a local, regional or national support?

National support

Frumkvöðlasjóður Íslandsbanka**Link to support information on website**

<https://www.islandsbanki.is/um-islandsbanka/samfelagsleg-abyrgd/frumkvodlasjodur/>

Type of Finance Support

Grant

Description of the support

Grants for projects in renewable energy and sustainable fisheries. The goal is to support innovation in that field.

Agency Responsible for Support

Íslandsbanki

www.isb.is

Maximum and minimum funding available

50% of cost is eligible

Is this Specific to Renewable Energy businesses?

Yes and sustainable fisheries

Is this a local, regional or national support?

National support

Átak til atvinnusköpunar**Link to support information on website**

<http://nmi.is/studningur/styrkir/atak-til-atvinnuskoepunar/>

Type of Finance Support

Grant

Description of the support

Átak til atvinnusköpunar is a fund for small innovation projects and marketing actions especially for entrepreneurs and SMEs.

Agency Responsible for Support

Innovation Center Iceland

www.nmi.is

Maximum and minimum funding available

50% of cost is eligible

Is this Specific to Renewable Energy businesses?

No

Is this a local, regional or national support?

National support

Tækniþróunarsjóður (Technology Development fund)**Link to support information on website**

<http://en.rannis.is/funding/research/technology-development-fund/nr/545>

Type of Finance Support

Grant

Description of the support

The role of the fund is to support research and development activities, which aim towards innovation in Icelandic industry. The Technology Development Fund is a competitive fund which issues its calls for proposals twice a year.

Agency Responsible for Support

Rannis (The Icelandic Centre for Research)

www.rannis.is

Maximum and minimum funding available

The maximum contribution towards projects can amount to a total of up to ISK 45 million for a period of three years; ISK 30 million during two years or ISK 15 million during one year, which can be variously distributed during the years of support, depending on the progress of the project and its funding requirements. Up to one third of the total grant can be used for market purposes (see the Icelandic rules for definition of allowed project parts) Applicants' matching contribution of 50% is required. Support lasting up to three years may be applied for, although the fund's board of directors only confirms a grant for one year at a time. Continued support depends on progress and the fulfilment of contractually agreed results.

Is this Specific to Renewable Energy businesses?

No

Is this a local, regional or national support?

National support

Icelandic student Innovation fund

Link to support information on website

<https://en.rannis.is/funding/research/icelandic-student-innovation-fund/nr/570>

Type of Finance Support

Grant

Description of the support

The goal of the Icelandic Student Innovation Fund is to provide an opportunity for universities, research institutions and companies to recruit students, in graduate and postgraduate studies, to undertake ambitious and challenging research projects during the summer time.

Agency Responsible for Support

Rannis (The Icelandic Center for Research)

www.rannis.is

Maximum and minimum funding available

The grant is presented in the form of monthly grants for the student, but the company or the relevant supervisor is to supply facilities and pay material cost. The fund monitors the progress of the project over the summer, whilst the supervisor is responsible for the actual execution of the project and the delivering of a final report at the end of the summer.

Is this Specific to Renewable Energy businesses?

No

Is this a local, regional or national support?

National support

Uppbyggingarsjóður (structural fund for each region in Iceland)

Link to support information on website

- <http://www.eything.is/menningarrad/uppbyggingarsjodur>
- <http://www.vestfiridir.is/Uppbyggingarsjodur/>
- <http://www.austurbru.is/is/uppbyggingarsjodur-austurlands-1>
- <http://www.sass.is/radgjof-2/styrkir-til-eflingar-atvinnulifs-og-nyskopunar-2/>
- <http://www.atthing.is/uppbyggingarsjodur/>
- http://www.menningarviti.is/default.asp?sid_id=61499&tre_rod=002|&tld=11
- <http://sss.is/starfsemi/uppbyggingarsjodur>
- <http://www.ssnv.is/is/uppbyggingarsjodur>

Type of Finance Support

Grant

Description of the support

These grants are in all regions of Iceland. Innovation projects as well as cultural project are funded. The funding of the grants comes from the government but is allocated locally (or in each region of Iceland).

Agency Responsible for Support

Ministry of Industries and innovation

www.atvinnuvegaraduneyti.is

Maximum and minimum funding available

50% of cost is eligible

Is this Specific to Renewable Energy businesses?

No

Is this a local, regional or national support?

Regional support

Taxation or welfare supports or concessions for businesses**Skattafrádráttur rannsókna- og þróunarverkefna (tax deduction for research and development projects).****Link to support information on website**

<https://www.rannis.is/sjodir/atvinnulif/skattfradrattur/>

Type of Taxation or Welfare Support (be specific)

Taxation

Description of the support

Companies that have received confirmation Rannís of research or development project have the right to tax deduction.

Tax deduction is based on each project. A company that owns a research and development project are entitled to deduction from the assessed income tax of up to 20% of the expenses incurred for these projects. The maximum expenses for calculation for each company is ISK 100,000,000 in operating year.

Agency Responsible for Support

Rannís (The Icelandic Centre for Research)

www.rannis.is

Maximum and minimum funding available

Up to 20% of income tax. Maximum expenses for tax deduction for each project is ISK 100, 000,000

Is this Specific to Renewable Energy businesses?

No

Is this a local, regional or national support?

National

Other useful/relevant information

https://www.rannis.is/media/skattaivilnun/Handbok_mars15.pdf

Soft supports

Startup energy

Link to support information on website

<http://www.startupenergyreykjavik.com/en/>

Type of Support

Mentoring program

Description of the support

Startup Energy Reykjavik is a mentorship-driven seed stage investment program with focus on energy related business projects.

Agency Responsible for Support

Klak Innovit (Icelandic start-ups)

<http://www.icelandicstartups.com/>

Maximum and minimum funding available

Not applicable

Is this Specific to Renewable Energy businesses?

Yes

Is this a local, regional or national support?

National support

Konur í orkumálum – Women Network in Energy

Link to support information on website

<https://www.facebook.com/Konur-%C3%AD-orkum%C3%A1lum-259616860889418/?fref=ts>

Type of Support

Network

Description of the support

This is a network for women in the energy business.

Agency Responsible for Support

Community on Facebook

<https://www.facebook.com/Konur-%C3%AD-orkum%C3%A1lum-259616860889418/?fref=ts>

Maximum and minimum funding available

Not applicable

Is this Specific to Renewable Energy businesses?

Yes

Is this a local, regional or national support?

National support

Samband sveitarfélaga á köldum svæðum –

Association of municipalities on cold areas

Link to support information on website

<http://ssks.is/>

Type of Support

Network

Description of the support

The network aims:

- working to decrease energy costs for heating "cold areas"
- to promote (further) geothermal prospecting
- to gather and share information in energy to its members
- to promote public awareness of ways of save energy
- the network consist of 37 municipalities in Iceland where heating cost is high and no useable geothermal

Agency Responsible for Support

Samband sveitarfélaga á köldum svæðum (Association of municipalities on cold areas)

www.skss.is

Maximum and minimum funding available

No funding. Network and lobbying.

Is this Specific to Renewable Energy businesses?

Yes

Is this a local, regional or national support?

National

Iceland geothermal**Link to support information on website**

<http://www.icelandgeothermal.is/>

Type of Support

Cluster

Description of the support

Iceland Geothermal is a platform where you can access all general information about geothermal energy in Iceland and leads you to the right coordinator if you are building up infrastructure or business in relation to the resource of geothermal.

Iceland Geothermal is a non-profit organisation that was established in February 2013. IG is an industry driven cluster cooperation partnership which focuses on the field of geothermal energy. The Iceland Geothermal Cluster Initiative was founded by 43 diverse members, including companies, associations and institutions.

Agency Responsible for Support

Iceland geothermal

www.icelandgeothermal.is

Maximum and minimum funding available

Not relevant

Is this Specific to Renewable Energy businesses?

Yes

Is this a local, regional or national support?

National

Research and Development supports**Icelandic Research Fund****Link to support information on website**

<https://en.rannis.is/funding/research/icelandic-research-fund/nr/527>

Type of R&D Support

Grant types

- Project grants
- Grant of excellence
- Postdoctoral fellowship
- Doctoral student grant

Description of the support

The IRF awards funding to research students and defined research projects led by individuals, research teams, universities, research institutes, and companies.

Agency Responsible for Support

The Icelandic Centre for Research

www.rannis.is

Is this Specific to Renewable Energy businesses?

No

Is this a local, regional or national support?

National

Other useful/relevant information

<https://en.rannis.is/media/rannsoknasjodur/IRF-Handbook-2016.pdf>

Other**Incubation spaces****Link to support information on website**

<http://nmi.is/studningur/frumkvoedlasetur/>

Type of Support

Incubations spaces

Description of the support

Leasing of office space/desk on a low fee Access to meeting facilities, facilities for workshops, research and prototype construction etc.

Professional advice and support from experts Innovation Centre

Creative environment and powerful network

Lectures and workshops on relevant factors in the entrepreneurial environment

Agency Responsible for Support

Innovation Center Iceland

www.nmi.is

Is this Specific to Renewable Energy businesses?

No

Is this a local, regional or national support?

Local



GREBE

Generating Renewable Energy
Business Enterprise

www.grebeproject.eu

Ireland



Northern Periphery and
Arctic Programme
2014-2020



Ireland

What kind of agencies offer support to SMEs?

There are a number of different agencies which support SMEs in Ireland. Each agency has a different role and focuses on businesses of different size, potential or area of focus. Although the business support system is largely funded and organized through central government there are a series of local offices which provide the support to local businesses.

There is a range of supports for enterprise of all kinds in Ireland. These include access to finance, management development, mentoring supports, business development programmes, market supports and trade promotion.

Is there one agency which is the first place for businesses to go?

The Local Enterprise Offices (LEOs, <https://www.localenterprise.ie/>) are the 'first-stop-shop' state support service for micro and small businesses in each local area. The LEOs provide advice and direction, covering all government supports and requirements, to anyone who wishes to start or expand a business. The LEOs can also provide funding for projects that meet certain criteria (generally with regard to export potential) and other non-financial supports such as training and mentoring.

Companies with clear high growth potential can be fast-tracked to the next level of support available from Enterprise Ireland (<https://www.enterprise-ireland.com/en/>) which works in partnership with Irish enterprises to help them start, grow, innovate and win export sales in global markets. They provide funding and supports for companies - from entrepreneurs with business propositions for a high potential start-up through to large companies expanding their activities, improving efficiency and growing international sales.

Microfinance Ireland provides support in the form of loans for up to €25,000, available to microenterprises employing less than 10 people, with viable business propositions, that do not meet the conventional risk criteria applied by banks.

There are also a variety of state backed equity investment funds including the WDC SME investment fund (<http://www.wdc.ie/wdc-investment-fund/sme-investment-fund/>) which operates in Ireland's Western Region.

Supports are also available for businesses from LEADER under the National Rural Development Programme 2014-2020 (<http://www.agriculture.gov.ie/ruralenvironment/ruraldevelopmentprogrammerdp2014-2020/>). LEADER is implemented at a local area through the Local Development Strategy (LDS) which outlines a range of Actions which will be delivered under three main themes one of which is Rural Environment which includes the development of renewable energy.

Is it clear to the SME where they should go for support?

An online tool which sets out the variety of supports available to all enterprises across all sectors is embedded or linked to over 30 Government websites including Department of Enterprise, Jobs and Innovation website and the websites of the Local Enterprise Offices and Enterprise Ireland.

<http://www.supportingsmes.ie/businessdetails.aspx>

Are business supports restricted to certain types of business, or enhanced for certain types of SMEs (e.g. only available for manufacturing or for exporters)?

There is a particular focus on manufacturing and on businesses with export potential.

Are there special supports for RE businesses?

There are specific research and development grants available from the Sustainable Energy Authority of Ireland (SEAI) but there is little direct support specifically for renewable energy businesses in Ireland (although there are a number of demand and supply side supports aimed at stimulating the market (see [here link to WP3.1 for more information](#))).

Business supports available in the Republic of Ireland are described in more detail in the coming pages under the following themes:

- Financial Support (grants, loans, equity investment)
- Taxation or welfare supports or concessions for businesses
- Soft supports e.g. mentoring, training, specialist advice, networks
- Research and Development supports
- Social and Community supports (focused on not for profit)
- Other- e.g. Incubation space or office space

Financial Support (grants, loans, equity investment)

Micro Enterprise Loan Fund

Link to support information on website

<http://www.microfinanceireland.ie>

Type of Finance Support

Loan

Description of the support

Microfinance Ireland is a Government initiative providing loans from €2k to €25k to commercially viable start-up, newly established or growing microenterprises that have been declined credit by the banks.

Agency Responsible for Support

Micro Finance Ireland

Maximum and minimum funding available

€2k to €25k

Is this Specific to Renewable Energy businesses?

No

Is this a local, regional or national support?

National

Credit Guarantee Scheme

Link to support information on website

<https://www.djei.ie/en/What-We-Do/Supports-for-SMEs/Access-to-Finance/SME-Credit-Guarantee-Scheme/>

Type of Finance Support

Loan Guarantee

Description of the support

This Government scheme enables the State, in certain circumstances, to act as a guarantor to the bank for your loan application. The purpose of the scheme is to guarantee commercially viable SMEs that have been declined credit due to inadequate collateral and/or lack of understanding of the business model.

Agency Responsible for Support

Department of Jobs, Enterprise and Innovation

Maximum and minimum funding available

Each Scheme lender has the option to set their own higher minimum amounts or lower maximum amounts within these limits. For more information see <https://www.djei.ie/en/What-We-Do/Supports-for-SMEs/Access-to-Finance/SME-Credit-Guarantee-Scheme/>

Is this Specific to Renewable Energy businesses?

No

Is this a local, regional or national support?

National

Strategic Banking Corporation of Ireland (SBCI) - Investment and Working Capital Loans

Link to support information on website

<http://sbci.gov.ie/products/sbci-investment-working-capital-loan>

Type of Finance Support

Investment and working Capital Loans

Description of the support

The following product features are available through [the partner On-Lenders](#) with SBCI's support, subject to the financial institutions' own credit policies and procedures.

With SBCI providing low cost funding to eligible SMEs, these products will deliver the following benefits:

- Lower interest rates
- Available for both investment and working capital purposes
- Minimum loan maturity of 2 years
- Loan amounts up to €5m

In addition, subject to the financial institutions' credit policies and procedures, the following features may also be available to qualifying SMEs:

- Repayment schedule flexibility
- Loan maturity of up to 10 years
- Facility maturity tailored to correspond with investment life cycle

Agency Responsible for Support

Strategic Banking Corporation of Ireland

Maximum and minimum funding available

Loan amounts up to €5m

Is this Specific to Renewable Energy businesses?

No

Is this a local, regional or national support?

National

Strategic Banking Corporation of Ireland (SBCI) - Refinance of Exiting Banks**Link to support information on website**

<http://sbc.gov.ie/products/re-finance>

Type of Finance Support

Loan- Refinance of Exiting Banks

Description of the support

This product aims to facilitate those SMEs whose current bank loan facilities originated with banks, which are exiting the Irish market. The following product features are available through [the partner On-Lenders](#) with SBCI's support, subject to the financial institutions' own credit policies and procedures.

- Available to eligible SMEs whose current facilities originated with a bank which is exiting or has exited the Irish market, i.e. ACC Bank, Danske Bank, Lloyds / Bank of Scotland Ireland, Irish Nationwide / IBRC, Anglo Irish Bank / IBRC.
- Lower interest rates
- Loan amounts up to €5m
- Minimum loan maturity of 2 years
- Loans may also cover investment and working capital purposes

Agency Responsible for Support

Strategic Banking Corporation of Ireland

Maximum and minimum funding available

Loan amounts up to €5m

Is this Specific to Renewable Energy businesses?

No

Is this a local, regional or national support?

National

Strategic Banking Corporation of Ireland (SBCI) - Leasing and Hire Purchase**Link to support information on website**

<http://sbc.gov.ie/products/leasing-and-hire-purchase>

Type of Finance Support

Leasing and Hire Purchase

Description of the support

SME leasing offers flexible asset finance funding solutions, including leasing and hire purchase (HP) that will allow SMEs finance assets including cars, commercial vehicles, plant and machinery.

Lease terms are usually between 2 to 5 years and provide the SME with fixed monthly rental payments for the term. In addition payments may be V.A.T. deductible where registered and where applicable.

How does it work?

Leasing is an arrangement whereby the leasing company buys the assets your business needs and leases them to you over a given period (usually 2 – 5 years). In this way you are acquiring the use of the asset without putting your cash flow under extra pressure. At the end of the lease period you can either extend the lease or buy the asset outright (terms and conditions apply).

Hire Purchase

Hire purchase is an agreement whereby fixed plant / equipment / vehicles are purchased by the leasing/HP Company on behalf of the customer and hired for an agreed term.

On completion of the term, ownership passes to the customer for a nominal sum.

How does it work?

A hire purchase agreement is drawn up and signed by the hirer on behalf Leasing/HP Company.

Terms usually range from 2 – 5 years.

The asset may be purchased for a nominal amount at the end of the agreed term.

Contract Hire Agreements (Vehicle Leasing)

Contract Hire facilities to SMEs

- Rent/hire a vehicle for a set monthly payment over a fixed period
- Contract hire terms over 3 or 4 years
- Lower monthly payment than hire purchase or lease
- Monthly rental takes into account the estimated residual value at the end of the term so there is no requirement for the user to pay the entire capital cost
- contract hire agreements can include maintenance packages

How does it work?

Contract hire is an arrangement whereby the leasing company buys the vehicles and in turn hires them out to SMEs over a term with an agreed residual value depending mainly on term, mileage / usage and resale value. The key benefits of contract hire are that the monthly payments are fixed, the maintenance contract is optional and there is lower initial outlay/deposit and no depreciation risk on the vehicle for the company.

Rental Agreements (Vendor Finance)

Rental agreements are leasing facilities available for approved office equipment suppliers to enable SME's finance photocopiers, printers, telecommunication equipment and business equipment in general.

Leasing facilities for dental and specialised medical equipment is also available.

- Lease terms over 2 – 5 years
- Fixed monthly/quarterly rental
- Maintenance package available
- V.A.T. deductible where applicable

How does it work?

SMEs arrange finance via their own office equipment suppliers who act as intermediaries with the leasing company.

Agency Responsible for Support

Strategic Banking Corporation of Ireland

Is this Specific to Renewable Energy businesses?

No

Is this a local, regional or national support?

National

Seed & Venture Capital Programme

Link to support information on website

<http://www.enterprise-ireland.com/en/Invest-in-Emerging-Companies/Seed-and-Venture-Capital-Scheme/>

Type of Finance Support

Equity (Seed and VC)

Description of the support

The 2013-2018 Seed & VC Scheme improves access to finance for SMEs and to further develop the Seed & VC industry in Ireland

Agency Responsible for Support

Enterprise Ireland www.enterprise-ireland.com

Is this Specific to Renewable Energy businesses?

No

Is this a local, regional or national support?

National

Other useful/relevant information

Available for Start-ups

Competitive Start Fund

Link to support information on website

<http://www.enterprise-ireland.com/en/funding-supports/company/hpsu-funding/competitive-start-fund-csf-.html>

Type of Finance Support

Grant/Fund

Description of the support

This fund works to accelerate the growth of start-up companies that have the capability to succeed in global markets.

The purpose of the Competitive Start Fund is to accelerate the growth of start-up companies that have the capability to succeed in global markets. The fund is designed to enable those companies reach key commercial and technical milestones, for example:

- Evaluate overseas market opportunities and reach firm conclusions regarding the viability of the proposed business.
- Build a prototype.
- Secure a reference site.
- Develop a market entry plan for exploiting international opportunities.
- Secure partnership deal or strategic alliance.
- Identify suitable channels to international markets.
- Secure third party investment e.g. business angel, Venture Capital.

All applications to the Competitive Start Fund must be made via the Enterprise Ireland online application system during call open dates.

Agency Responsible for Support

Enterprise Ireland www.enterpriseireland.com

Is this Specific to Renewable Energy businesses?

No

Is this a local, regional or national support?

National

Priming grants

Link to support information on website

<https://www.localenterprise.ie/Discover-Business-Supports/Financial-Supports/Priming-Grant/>

Type of Finance Support

Grant

Description of the support

Priming grants

<https://www.localenterprise.ie/Discover-Business-Supports/Financial-Supports/Priming-Grant/>

These grants are for sole traders, partnerships, community or limited companies to develop their businesses. Finance is subject to eligibility criteria which you will need to discuss further with your local LEO Office.

Agency Responsible for Support

Local Enterprise Office (LEO) www.localenterprise.ie

<https://www.localenterprise.ie/Find-Your-Local-Enterprise-Office/>

Maximum and minimum funding available

n/a

Is this Specific to Renewable Energy businesses?

No

Is this a local, regional or national support?

Administered locally but available countywide

Business Expansion Grant**Link to support information on website**

<https://www.localenterprise.ie/Discover-Business-Supports/Financial-Supports/Business-Expansion-Grant/>

Type of Finance Support

Grants and loans

Description of the support

Business Expansion Grant

<https://www.localenterprise.ie/Discover-Business-Supports/Financial-Supports/Business-Expansion-Grant/>

This grant is to help support domestically traded manufacturing and service businesses with the potential to trade internationally.

Agency Responsible for Support

Local enterprise office

<https://www.localenterprise.ie/Find-Your-Local-Enterprise-Office/>

Maximum and minimum funding available

n/a

Is this Specific to Renewable Energy businesses?

No

Is this a local, regional or national support?

Administered locally but available countywide

Feasibility/Innovation Grant**Link to support information on website**

<https://www.localenterprise.ie/Discover-Business-Supports/Financial-Supports/Feasibility-Grant/>

Type of Finance Support

Grants and loans

Description of the support

Feasibility/Innovation Grant

<https://www.localenterprise.ie/Discover-Business-Supports/Financial-Supports/Feasibility-Grant/>

These grants are designed to assist with researching market demand for a product or service and examining its sustainability.

Agency Responsible for Support

Local enterprise office

<https://www.localenterprise.ie/Find-Your-Local-Enterprise-Office/>

Maximum and minimum funding available

n/a

Is this Specific to Renewable Energy businesses?

No

Is this a local, regional or national support?

Administered locally but available countywide

Microfinance LEO Loans**Link to support information on website**

<http://www.localenterprise.ie/Discover-Business-Supports/Financial-Supports/Microfinance-Loans/>

Type of Finance Support

Loan

Description of the support

Microfinance LEO Loans

<http://www.localenterprise.ie/Discover-Business-Supports/Financial-Supports/Microfinance-Loans/>

Loans are provided from €2,000 up to €25,000, from 3 to 5 years, with flexibility on repayment terms and a reduced interest rate for LEO clients.

Agency Responsible for Support

Local enterprise office

<https://www.localenterprise.ie/Find-Your-Local-Enterprise-Office/>

Maximum and minimum funding available

€2,000 to €25,000

Is this Specific to Renewable Energy businesses?

No

Is this a local, regional or national support?

Administered locally but available countywide

REFIT Schemes and Supports

Link to support information on website

<http://www.dccae.gov.ie/en-ie/energy/topics/Renewable-Energy/electricity/renewable-electricity-supports/Pages/REFIT-Schemes-and-Supports.aspx>

Type of Support

Feed in Tariff


Description of the support

The Renewable Energy Feed in Tariff (REFIT) schemes/supports are funded by the Public Service Obligation (PSO) which is paid for by all electricity consumers. The REFIT schemes have been designed to incentivise the development of renewable electricity generation in order to ensure Ireland meets its goal of 40% of electricity coming from renewable sources by 2020.

More information on the REFIT Schemes  [Frequently Asked Questions \(PDF 0.3MB\)](#)

Reference

Prices

Section 5.2 of the Terms and Conditions of the three REFIT schemes provide for adjustments to reference prices by way of annual indexation using the annual percentage change in the Consumer Price Index as quoted by the Central Statistics Office, which you can find on their [website](#). More information on  [reference prices \(PDF 0.2MB\)](#) for 2015, in euro per megawatt hour.

More information on  [2016 reference prices \(PDF 0.2MB\)](#) for REFIT

REFIT 1

Renewable Energy Feed in Tariff (REFIT) 1, was the original REFIT Scheme, which was open for application until 31 December 2009.

[See more information on REFIT 1](#)

REFIT 2

Renewable Energy Feed in Tariff (REFIT) 2 came into operation in March 2012 and closed for operations on 31st December 2015.

[See more information on REFIT 2](#)

REFIT 3

Renewable Energy Feed in Tariff (REFIT) 3 was designed to incentivise the addition of 310MW of bioenergy capacity to the Irish Grid. This closed for applications on 31st December 2015.

[See more information on REFIT 3](#)

Agency Responsible for Support

Department of Communications, Climate Action and Environment <http://www.dccae.gov.ie/>

Is this Specific to Renewable Energy businesses?

Yes

Is this a local, regional or national support?

National

Other useful/relevant information

The current REFIT schemes are now closed as of 31 December 2015. The Department will no longer accept applications

New Renewable Electricity Support Schemes

The Department of Communications, Energy and Natural Resources is developing a new support scheme for renewable electricity.

[More on the new support scheme](#)

Further information on the new schemes will be available on the GREBE Supports tool

Competitive Feasibility Fund

Link to support information on website

http://www.enterprise-ireland.com/El_Corporate/en/funding-supports/Company/HPSU-Funding/Competitive-Feasibility-Fund-CFF-.html

Type of Finance Support

Grant/ competitive

Description of the support

This is a fund to assist a new start-up company or individual entrepreneur to investigate the viability of a new significant growth orientated business. Enterprise Ireland regularly offers feasibility funding for business start-ups in various sectors and geographic regions.

The objective of the Competitive Feasibility Funds is to assist new start-up companies or entrepreneurs, to investigate the viability of a new growth-orientated business proposition which has the potential to become a High Growth Potential Start-up (HPSU). These are companies that can develop scalable innovative technologies, products or services for sale on world markets. We are seeking to support projects that are likely to achieve significant growth within three years (sales of €1m per annum and employment of 10 or more) or, where a company is required to have FDA or CE approval, to have €1 million in sales within three years of approval to sell.

The purpose of the Feasibility Grant is to enable the applicant and Enterprise Ireland to reach firm conclusions regarding the project's viability and set out investor-ready plans and financials associated with developing and commercialising the product or service on international markets. The Fund is open to manufacturing and [internationally traded services business](#) and designed to enable start-up companies reach key commercial and technical milestones.

Agency Responsible for Support

Enterprise Ireland <https://www.enterprise-ireland.com/en/>

Is this Specific to Renewable Energy businesses?

No

Is this a local, regional or national support?

National

Western Investment Fund for SMEs**Link to support information on website**

<http://www.wdc.ie/wdc-investment-fund/>

Type of Finance Support

Loans and equity

Description of the support

This Investment Fund provides loans and equity to high growth enterprises. It has already funded projects in areas such as bio ICT, medical devices, ICT, high tech manufacturing, food and tourism.

Agency Responsible for Support

Western Development Commission www.wdc.ie

Is this Specific to Renewable Energy businesses?

No

Is this a local, regional or national support?

Regional- operated by a regional development agency

Business Angel Finance**Link to support information on website**

<http://www.intertradeireland.com/equity-old/businessangelfinance/>

www.hban.org

Type of Finance Support

Equity investment

Description of the support

Through Business Angel Finance, high net worth individuals or syndicates invest up to €1 million for usually between 3 and 7 years in return for equity stake in your business.

Agency Responsible for Support

Intertrade Ireland www.intertradeireland.com

Maximum and minimum funding available

Up to €1m

Is this Specific to Renewable Energy businesses?

No

Is this a local, regional or national support?

Regional/cross border

Innovative HPSU Fund (Equity)**Link to support information on website**

<http://www.enterpriseireland.ie/en/Funding-Supports/Company/HPSU-Funding/Innovative-HPSU-fund.html>

Type of Finance Support

Equity

Description of the support

Enterprise Ireland offers equity investment to high potential start-up (HPSU) clients, on a co-funded basis to support the implementation of company business plans.

Agency Responsible for Support

Enterprise Ireland <https://www.enterprise-ireland.com/en/>

Is this Specific to Renewable Energy businesses?

No

Is this a local, regional or national support?

National

Other useful/relevant information

Start Up

Taxation or welfare supports or concessions for businesses**Startup Relief for Entrepreneurs (SURE)****Link to support information on website**

<http://www.revenue.ie/en/tax/it/leaflets/it15.html>

Type of Taxation or Welfare Support

Tax relief

Description of the support

Startup Refunds for Entrepreneurs (SURE) is a tax relief incentive scheme. If you are interested in starting your own company, you may be entitled to an income tax refund of up to 41% of the capital that you invest.

<http://www.revenue.ie/en/tax/it/leaflets/it15.html>

Agency Responsible for Support

Revenue Commissioners

<http://www.revenue.ie/en/business/running/initiatives-smes.html>

Maximum and minimum funding available

n/a

Is this Specific to Renewable Energy businesses?

No

Is this a local, regional or national support?

National

Employment and Investment Scheme**Link to support information on website**

<http://www.revenue.ie/en/tax/it/leaflets/it55.html>

Type of Taxation or Welfare Support

Tax relief

Description of the support

The Employment and Investment Incentive Scheme offers investors up to 40% tax relief on their total income in return for investing in new ordinary shares in qualifying SMEs for a three year investment period

<http://www.revenue.ie/en/tax/it/leaflets/it55.html>

Agency Responsible for Support

Revenue Commissioners

<http://www.revenue.ie/en/business/running/initiatives-smes.html>

Maximum and minimum funding available

n/a

Is this Specific to Renewable Energy businesses?

No

Is this a local, regional or national support?

National

Tax Relief for new start-up companies**Link to support information on website**

<http://www.revenue.ie/en/practitioner/tax-briefing/archive/2013/no-022013.html>

Type of Taxation or Welfare Support

Tax relief

Description of the support

A tax relief from Corporation Tax can be available for new start-up companies who have a corporate tax liability of less than €40,000, subject to certain conditions being met.

<http://www.revenue.ie/en/practitioner/tax-briefing/2013/no-022013.html>

Agency Responsible for Support

Revenue Commissioners

<http://www.revenue.ie/en/business/running/initiatives-smes.html>

Maximum and minimum funding available

n/a

Is this Specific to Renewable Energy businesses?

No

Is this a local, regional or national support?

National

Research & Development Tax Credits**Link to support information on website**<http://www.revenue.ie/en/tax/ct/research-development.html>**Type of Taxation or Welfare Support**

Tax relief

Description of the support

A tax relief from Corporation Tax can be available for companies engaged in high value add Research & Development ('R&D') activities. The R&D Tax Credit gives a company a 25% tax credit for their expenditure on qualifying R&D in a given year.

<http://www.revenue.ie/en/tax/ct/research-development.html>**Agency Responsible for Support**

Revenue Commissioners

<http://www.revenue.ie/en/business/running/initiatives-smes.html>**Maximum and minimum funding available**

n/a

Is this Specific to Renewable Energy businesses?

No

Is this a local, regional or national support?

National

VAT measures to reduce burden on SMEs**Link to support information on website**<http://www.revenue.ie/en/tax/vat/index.html><http://www.revenue.ie/en/business/running/initiatives-smes.html>**Type of Taxation or Welfare Support**

VAT measures

Description of the support

A number of VAT measures facilitate small businesses including a) increasing the cash accounting threshold to €2m, b) retaining the 9% VAT rate, c) non-registration or reduced VAT filing for businesses with low turnover. These measures aim to assist cash flow, reduce administrative burden and encourage employment.

<http://www.revenue.ie/en/tax/vat/index.html>

Agency Responsible for Support

Revenue Commissioners

<http://www.revenue.ie/en/business/running/initiatives-smes.html>

Is this Specific to Renewable Energy businesses?

No

Is this a local, regional or national support?

National

The Back to Work Enterprise Allowance (BTWEA) scheme**Link to support information on website**

<http://www.welfare.ie/en/Pages/Back-to-Work-Enterprise-Allowance-Self-Employed.aspx>

www.welfare.ie/en/downloads/sw92.pdf

Type of Taxation or Welfare Support

Social Welfare Support

Description of the support

Allows those embarking on self-employment to retain some existing welfare benefits while setting up a new business. If you are getting certain social welfare payments and you would like to become self-employed, the Back to Work Enterprise Allowance (BTWEA) allows you to keep a portion of your social welfare payment for 2 years.

Agency Responsible for Support

Department of Social Protection

<http://www.welfare.ie>

Is this Specific to Renewable Energy businesses?

No

Is this a local, regional or national support?

National

JobsPlus**Link to support information on website**

www.jobsplus.ie

Type of Taxation or Welfare Support

Welfare Support

Description of the support

JobsPlus is an employer incentive which encourages and rewards employers who offer employment opportunities to jobseekers on the Live Register. JobsPlus is a simple scheme for employers to access, offering up to €10,000 for a qualifying recruit, payable on a monthly basis over a two year period. The employment you provide must be for at least 30 hours per week and must span a minimum of 4 days in each week

Agency Responsible for Support

Department of Social Protection

Maximum and minimum funding available

Max €10,000

Is this Specific to Renewable Energy businesses?

No

Is this a local, regional or national support?

National

Soft supports e.g. mentoring, training, specialist advice, networks

Accelerate Management Development Programme**Link to support information on website**

<https://www.localenterprise.ie/Discover-Business-Supports/Training-Programmes/Accelerate-Management-Development-Programme/>

Description of the support

This programme provides business owners/managers with the management, leadership, business skills and knowledge to achieve sustainability and growth in their business.

Agency Responsible for Support

Local enterprise office

<https://www.localenterprise.ie/Find-Your-Local-Enterprise-Office/>

Is this Specific to Renewable Energy businesses?

No

Is this a local, regional or national support?

Administered locally but available countywide

Access to EU Programmes, EU Finance and EU Markets**Link to support information on website**

<http://www.een-ireland.ie/>

Type of Support

Advice

Description of the support

The Enterprise Europe Network assists SMEs who are looking for EU Programmes and Supports. The Network organises international brokerage events and provides a central database for SMEs to offer, or search for, business opportunities, technology transfer and licensing deals in the EU and in many other countries.

Agency Responsible for Support

Enterprise Ireland <https://www.enterprise-ireland.com/en/>

Is this Specific to Renewable Energy businesses?

No

Is this a local, regional or national support?

National

Horizon 2020 Supports**Link to support information on website**

<http://www.intertradeireland.com/horizon2020/>

Type of Support

Advice

Description of the support

Aimed at helping companies and researchers from Ireland and Northern Ireland collaborate in Horizon 2020. InterTrade Ireland offers a suite of supports and vouchers specifically designed to facilitate this North South collaboration and to increase participation in the Horizon 2020 funding scheme.

Agency Responsible for Support

InterTrade Ireland www.intertradeireland.com

Maximum and minimum funding available

n/a

Is this Specific to Renewable Energy businesses?

No

Is this a local, regional or national support?

Regional/cross border

New Frontiers Entrepreneur Development Programme**Link to support information on website**

<http://www.enterprise-ireland.com/en/Start-a-Business-in-Ireland/Supports-for-High-Potential-Start-Ups/New-Frontiers-Entrepreneur-Development-Programme.html>

Type of Support

Entrepreneur/personal development

Description of the support

This is a national Incubation programme that offers successful applications a package of supports to help accelerate business growth and equip individual with the skills to start and grow their company.

Agency Responsible for Support

Enterprise Ireland <https://www.enterprise-ireland.com/en/> / <https://www.newfrontiers.ie/>

Maximum and minimum funding available

n/a

Is this Specific to Renewable Energy businesses?

No

Is this a local, regional or national support?

National

Training Networks Programme (TNP)**Link to support information on website**

<http://www.skillnets.ie/training-networks>

<http://www.skillnets.ie/companies>

Type of Support

Training

Description of the support

Join a Skillnets training network to benefit from high quality training that is subsidised, relevant to your needs, and delivered at a time and in a location that suits your business.

Agency Responsible for Support

Skillnets

www.skillnets.ie

Maximum and minimum funding available

n/a

Is this Specific to Renewable Energy businesses?

No, but there could be an RE network

Is this a local, regional or national support?

Regional/ Local

Management Works Programme**Link to support information on website**

<http://www.managementworks.ie>

Type of Support

Training and mentoring

Description of the support

Subsidised management development training and mentoring programme available to businesses in all sectors to assist them to grow in terms of their sales, output and employment.

Agency Responsible for Support

Skillnets

<http://www.managementworks.ie>

www.skillnets.ie

Maximum and minimum funding available

n/a

Is this Specific to Renewable Energy businesses?

No

Is this a local, regional or national support?

National

Trade Accelerator Vouchers**Link to support information on website**

http://www.intertradeireland.com/trade_accelerator_vouchers/

Type of Support

Vouchers for business services and market research

Description of the support

These vouchers provide financial support towards professional advice such as financial and legal. These vouchers can also be used for market research to scope potential business in opposite jurisdiction.

Agency Responsible for Support

InterTrade Ireland www.intertradeireland.com

Is this Specific to Renewable Energy businesses?

No

Is this a local, regional or national support?

Regional/cross border

Start Your Own Business Programme**Link to support information on website**

<https://www.localenterprise.ie/Discover-Business-Supports/Training-Programmes/Start-Your-Own-Business-Programme/>

Type of Support

Training and advice

Description of the support

This programme is for people who have a business idea and want to assess its viability and decide whether to proceed.

Agency Responsible for Support

Local enterprise offices www.localenterprise.ie

Maximum and minimum funding available

n/a

Is this Specific to Renewable Energy businesses?

No

Is this a local, regional or national support?

Administered locally but available all over the country

Tendering Supports**Link to support information on website**

<http://www.intertradeireland.com/tendersuccessfully/>

<http://www.intertradeireland.com/go-2-tender/>

Type of Support

Advice and training

Description of the support

Aimed at helping companies gain the necessary knowledge and practical skills to tender successfully for public sector contracts particularly on a cross border basis. These include 2 day workshops (Go2Tender), Meet the Buyer Events and supports for collaborative bidding.

Agency Responsible for Support

Intertrade Ireland www.intertradeireland.com

Is this Specific to Renewable Energy businesses?

No

Is this a local, regional or national support?

Regional/cross border

HPSU Feasibility Study Grant**Link to support information on website**

<https://www.enterprise-ireland.com/en/Funding-Supports/Company/HPSU-Funding/HPSU-Feasibility-Study-Grant-.html>

Type of Support

Study Grant

Description of the support

This Study Grant assists a new start-up company or individual entrepreneur to investigate the viability of a new export orientated business or proposition.

Agency Responsible for Support

Enterprise Ireland <https://www.enterprise-ireland.com/en/>

Is this Specific to Renewable Energy businesses?

No

Is this a local, regional or national support?

National

Other useful/relevant information

Start Up

SEAI Energy Advice and Mentoring**Link to support information on website**

http://www.seai.ie/Your_Business/Energy_Advice_Mentoring

Type of Support

Advice and Mentoring

Description of the support

SEAI provides free, one-to-one advice and mentoring to private-sector SMEs from one of our specialist energy advisors. These advisors help and motivate SMEs to assess their own energy use, to identify opportunities for savings and to take action to realise these savings.

Agency Responsible for Support

Sustainable Energy Authority of Ireland (SEAI)

www.seai.ie

Is this Specific to Renewable Energy businesses?

No

Is this a local, regional or national support?

National

Other useful/relevant information

Start Up

SME Support Tool**Link to support information on website**

<http://www.supportingsmes.ie/businessdetails.aspx>

Type of Support

Information on supports available for SMEs

Description of the support

Visit the SME support Tool to see what supports are available to help a business to grow.

There are over 170 government supports available to Irish Start Ups and small Businesses. The online tool will quickly help highlight relevant, available supports.

Agency Responsible for Support

Department of Jobs Enterprise and Innovation

<https://www.djei.ie/en/>

Action Plan for Jobs <http://www.actionplanforjobs.ie/>

Is this Specific to Renewable Energy businesses?

No

Is this a local, regional or national support?

National

Other useful/relevant information

For Start Ups and SMEs

Research and Development supports

Ocean Energy Prototype Development Fund

Link to support information on website

<http://www.seai.ie/Renewables/Ocean-Energy/Prototype-Development-Fund/>

Type of R&D Support

Funding

Description of the support

The main focus of the Prototype Development Fund programme is to stimulate the development and deployment of Ocean Energy (OE) devices and systems. As such, the emphasis is on industry-led projects for the following types of activities:

- Industry-led projects to develop and test wave and tidal energy capture devices and systems
- Independent monitoring of projects and technologies
- Industry-led research and development (R&D) aimed at the integration of ocean energy into the electricity market and the national electricity grid (and network)
- Data monitoring, forecasting, communications and control of OE systems
- Specific industry-led research projects which will be carried out by research centres, third level institutions and centres of excellence with a high level of expertise in the relevant area

Agency Responsible for Support

Sustainable Energy Authority of Ireland

Maximum and minimum funding available

Amount available varies, see details here:

<http://www.seai.ie/Renewables/Ocean-Energy/Prototype-Development-Fund/SEAI-Ocean-R-D-Call-2015.pdf>

Is this Specific to Renewable Energy businesses?

Yes

Is this a local, regional or national support?

National

Other useful/relevant information

SEAI is a member of OCEANERA-NET, a network of 16 national and regional funders and managers of research and innovation programmes, from 9 European Countries. The objective of OCEANERA-NET is to coordinate funding programmes between European countries and regions to support research and innovation in the ocean energy sector.

OCEANERA-NET will work towards joint calls for collaborative research and innovation projects. The Second Joint Call is now open! For more information see the OCEANERA-NET website: <http://www.oceaneranet.eu/>

Innovation Voucher for start-up companies**Link to support information on website**

<http://www.enterprise-ireland.com/en/Funding-Supports/Company/HPSU-Funding/Innovation-Voucher.html>

Type of R&D Support

Voucher

Description of the support

This voucher provides funding towards collaborating with registered college or knowledge provider to explore a business opportunity or technical problem.

Agency Responsible for Support

Enterprise Ireland <https://www.enterprise-ireland.com/en/>

Is this Specific to Renewable Energy businesses?

No- but might be particularly useful to them

Is this a local, regional or national support?

National

Other useful/relevant information

Start-up only

Innovation Partnership Grant Programme

Link to support information on website

http://www.enterpriseireland.ie/EI_Corporate/en/Research-Innovation/Companies/IPP-Brochure.pdf

Type of R&D Support

Research grant

Description of the support

This Programme provides financial support to companies who engage in collaborative research projects with Irish universities or Institutes of Technology (IOTs). The Innovation Partnership Programme can help you to take your business to the next level. Enterprise Ireland can help your company to access the latest skills and expertise from research institutes throughout Ireland.

The Innovation Partnership Programme can provide up to 80% of the cost of research work to develop new and improved products, processes or services, or generate new knowledge and know-how.

In an independent survey of companies that participated in the Innovation Partnership Programme:

- 96% of respondents would be willing to recommend the Programme to other businesses.
- 71% of participant companies surveyed said that their objectives were largely or fully achieved.
- Each €1 of funding invested by Enterprise Ireland in Innovation Partnerships delivered €7.71 Net Turnover Impact at the company side.

Agency Responsible for Support

Enterprise Ireland <https://www.enterprise-ireland.com/en/>

Is this Specific to Renewable Energy businesses?

No

Is this a local, regional or national support?

National

Employment Supports

EURES

Link to support information on website

[http://www.welfare.ie/en/Pages/European-Recruitment-Service-\(EURES\)_holder.aspx](http://www.welfare.ie/en/Pages/European-Recruitment-Service-(EURES)_holder.aspx)

Type of Support

Recruitment support

Description of the support

The European Employment Services (EURES) team can help employers who have difficulty recruiting staff in Ireland or who wish to broaden their skill base with access to jobseekers in other EU and EEA countries.

Agency Responsible for Support

European Employment Services; Department of Social Protection <http://www.welfare.ie/en/Pages/home.aspx>

Is this Specific to Renewable Energy businesses?

No

Is this a local, regional or national support?

National

Other useful/relevant information

Available in other partner regions

The EmployAbility Service**Link to support information on website**

<http://www.welfare.ie/en/Pages/List-of-Employability-Organisations.aspx>

Type of Support

Supports for employment of people with disabilities

Description of the support

The nationwide EmployAbility Service provides an employment support service for people with a health condition, injury, illness or disability and a recruitment advice service for the business community.

<http://www.welfare.ie/en/Pages/List-of-Employability-Organisations.aspx>

Agency Responsible for Support

Department of Social Protection www.welfare.ie

Is this Specific to Renewable Energy businesses?

No

Is this a local, regional or national support?

National

The Wage Subsidy Scheme**Link to support information on website**

http://www.welfare.ie/en/Pages/Wage-Subsidy-Scheme_holder_3176.aspx

Type of Support

Supports for employment of people with disabilities

Description of the support

The Wage Subsidy Scheme provides financial incentives to employers to employ disabled people who work more than 20 hours per week.

http://www.welfare.ie/en/Pages/Wage-Subsidy-Scheme_holder_3176.aspx

Agency Responsible for Support

Department of Social Protection www.welfare.ie

Is this Specific to Renewable Energy businesses?

No

Is this a local, regional or national support?

National

Work Place Supports

Link to support information on website

http://www.welfare.ie/en/Pages/Workplace-Supports_holder.aspx

Type of Support

Supports for employment of people with disabilities

Description of the support

A number of practical supports and allowances are available to companies to proactively assist the participation of people with a disability in the workforce. There are schemes available to support companies to employ someone with a disability, or to retain an employee who has acquired an impairment or illness

http://www.welfare.ie/en/Pages/Workplace-Supports_holder.aspx

Agency Responsible for Support

Department of Social Protection www.welfare.ie

Is this Specific to Renewable Energy businesses?

No

Is this a local, regional or national support?

National

Other- e.g. Incubation space or office space

Enterprise Space / Incubation space

Link to support information on website

<http://www.westbic.ie>

<http://www.gtc.ie/>

<http://www.fiontarlann.com>

Type of Support

Incubation/office space

Description of the support

Three examples are given:

The GTC provides a dynamic office space with business support services in a connected network of entrepreneurs, high growth companies, investors and support agencies. <http://www.gtc.ie/>

Fiontarlann is a 6100sq ft Incubation and Enterprise Centre in Donegal providing office space with business support services in a connected network of entrepreneurs, high growth companies, investors and support agencies.

<http://www.fiontarlann.com>

WestBIC Roscommon region provides hotdesking / office space with business support services in a connected network of entrepreneurs, with business support. <http://www.westbic.ie>

Agency Responsible for Support

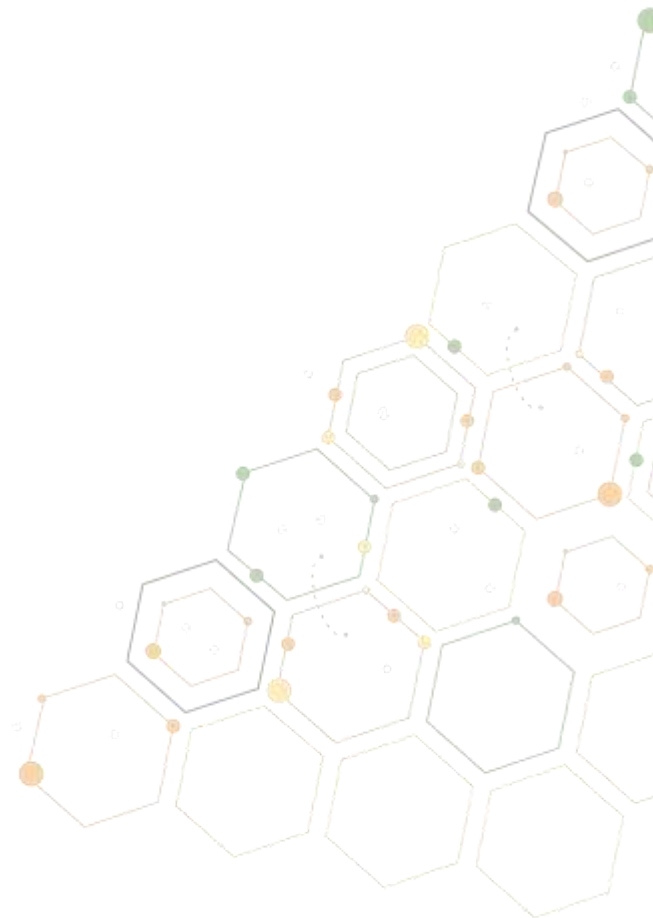
WestBIC (Business Innovation Centre) <http://www.westbic.ie>

Is this Specific to Renewable Energy businesses?

No

Is this a local, regional or national support?

Local/regional



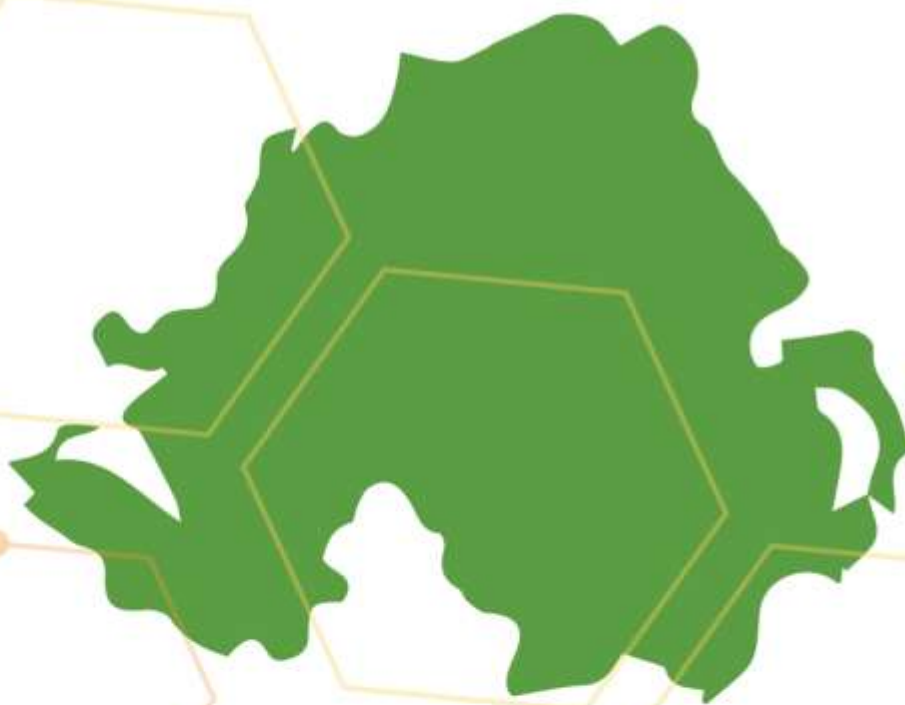


GREBE

Generating Renewable Energy
Business Enterprise

www.grebeproject.eu

Northern Ireland



Northern Periphery and
Arctic Programme
2014-2020



Northern Ireland

What kind of agencies offer support to SMEs?

In Northern Ireland there are 2 main agencies which offer support to SME's

Invest NI Invest will support many types of business, however they are very interested in businesses linked to improving the environment. Created a suite of six funds totalling more than £170 million to help SMEs with high growth potential, to forge ahead.

The start-up financial support is generally limited to businesses that intend to sell outside Northern Ireland.

Innovation Vouchers offers up to £5000 to purchase specialist knowledge from one of 39 respected universities, colleges and research organisations throughout Northern Ireland and the Republic of Ireland. This knowledge can help you to expand, improve or create new products, services and processes.

Is there one agency which is the first place for businesses to go?

Invest NI is the main agency in Northern Ireland, for all sizes of business to achieve the support that they require to help grow their business. Invest NI specialise in a wide range of businesses and will give you support in the following areas: develop strategy, improve skills, operate more efficiency, locate funding and new markets.

Invest NI advertise across all of Northern Ireland via social media, newspapers, posters and also hold seminars to encourage businesses to get involved. With their publicity and advertisement they can be easily contacted and will arrange to meet with you to discuss your business development within 2-3 weeks.

<https://www.investni.com/>

Are business supports restricted to certain types of business, or enhanced for certain types of SMEs (e.g. only available for manufacturing or for exporters)?

Invest NI support aerospace and defence, business services, construction, creative industries, financial services, food and drink, ICT and electronics, legal services, life and health sciences, materials handling, renewables and energy, security and tourism. There are a limited number of areas in which they have no real level of support e.g. retail – although they will support online selling.

Are there special supports for RE businesses?

Representatives of renewables in NI give advice on renewable energy sector. Provides the companies it represents with knowledge and advice on marine and wind renewable energy projects/ideas. It has well developed sub groups which are capable of dealing with any of these areas:

- Planning & environment
- Markets
- Grid
- Marine energy

Techstart work to help companies win customers, make key hires, and develop strategies and tactics to achieve the fastest possible growth in the value of the company.

Seek to be trusted peers and partners to help entrepreneurs realise their vision with experienced and timely support. With their backing, founders can focus on customer development and validating their business model.

<http://www.techstartni.com/>

Business supports available in Northern Ireland are described in more detail in the coming pages under the following themes:

- Financial Support (grants, loans, equity investment)
- Taxation, welfare supports and concessions for businesses
- Soft supports e.g. mentoring, training, specialist advice, networks
- Research and Development supports
- Social and Community supports (focused on non-profit)
- Other- e.g. Incubation space or office space

Financial Support (grants, loans, equity investment)

Invest NI

Link to support information on website

<https://www.investni.com/>

Type of Finance Support

- Grant aid
- Mentoring support
- Staff subsidies
- Overseas trade support

Description of the support

Invest NI approach to supporting businesses is based on three key elements:

- Providing information and advice, directly and through a range of information services.
- Providing support to people wanting to set up their own business and helping new and existing businesses grow and move into new markets.
- Providing tailored support to businesses that can make the greatest contribution to increasing productivity, innovation and export growth in Northern Ireland.

Because their resources are limited they primarily support those businesses that can make the biggest contribution to the economy.

Criteria typically used to determine whether a business can become an Invest NI client includes: Turnover exceeding £250K annually with over 25% being classed as export sales.

If a business based in Northern Ireland can show that it intends to sell outside Northern Ireland, is actively pursuing growth plans and will contribute to increasing productivity and innovation in Northern Ireland, you could become an Account Managed customer with Invest NI.

Detailed financial plans for three to five years will be needed to become an Invest NI Client along with full current accounts.

Once classed as an Invest NI Client you have access to a number of supports including;

- Access to wide range of expertise particular in export trade, IT, Innovation and sustainability.
- Grant Aid for staffing (specific roles including sales and IT roles)
- Grant Aid for ecommerce websites and online sales – typically 75%
- Grant Aid to travelling to Trade Shows and meeting with export customers

- Branding and Design programmes
- Innovation support from Intellectual Property and patents and product development
- Mentoring programmes in the area of sales, finances etc.
- Research and development teams and associate grant aid
- Market research with a full business research library located through Business Information Services

Agency Responsible for Support

Range of Invest NI offices across Northern Ireland with a number of Client Executives dealing with businesses and specialist staff based primarily in Belfast.

Maximum and minimum funding available

A suite of six funds totalling more than £170 million to help SMEs with high growth potential, like yours, to forge ahead.

Funding typically is set at 75% of the needed cost dependant on the area of support.

Is this Specific to Renewable Energy businesses?

No, Invest NI will support all types of business. However they are very interested in businesses linked to improving the environment.

Is this a local, regional or national support?

The start-up financial support is generally limited to businesses that intend to sell outside Northern Ireland.

Other useful/relevant information

Their Invest Growth Proof of Concept Fund provides grants to individuals, start-up businesses, micro enterprises and small or medium sized businesses to help them fully develop and test their ideas.

Invest NI also have a Proof of Concept programme that offers funding to local universities and research organisations to help researchers take their ideas out of the lab and into the market.

Intertrade Ireland

Link to support information on website

www.intertradeireland.com

Type of Finance Support

- Grant Aid
- Mentoring support
- Staff subsidies

Description of the support

InterTrade Ireland helps SME's across the island of Ireland by offering practical cross border business funding, intelligence and contacts.

They offer support to businesses new to cross border trade with New to Accelerate Vouchers offering support up to value of £10,000.

Go to Tender Programme: Tendering and procurement training and one to one mentoring for businesses who want to expand through tendering particularly on a cross border level.

Meet the Buyer event: Free event to allow businesses to meet with key buyers from the public sector.

Sales development support: Staff subsidies and graduate programmes for companies who want to develop and grow cross border sales. Acumen programme: Offering 50% of sales person salary to a maximum of £15k grant.

Elevate programme offering consultancy support up to the value of £5k specific to growing cross border trade

Innovation in business support for businesses completing cross border trading. Graduate support for developing new product and innovative processes – maximum aid £44,250. Various other supports available if business is eligible.

Agency Responsible for Support

InterTrade Ireland – NI office based in Newry

Maximum and minimum funding available

High calibre businesses will only be accepted. Various levels of funding – as detailed above.

Is this Specific to Renewable Energy businesses?

No. InterTrade Ireland will support all types of business that are interested in expanding cross border trading.

Is this a local, regional or national support?

Any business located on the Island of Ireland who wants to begin or grow cross border trading.

Soft supports e.g. mentoring, training, specialist advice, networks

Northern Ireland Renewables Industry Group

Link to support information on website

<http://www.ni-rig.org/>

Type of Support

Representatives of renewables in NI, giving advice on renewable energies

Description of the support

Provides the companies it represents with knowledge and advice on marine and wind renewable energy projects/ ideas. It has well developed sub groups which are capable of dealing any of these areas:

- Planning & environment
- Markets
- Grid
- Marine energy

Agency Responsible for Support

Northern Ireland Renewables Industry Group <http://www.ni-rig.org/>

Maximum and minimum funding available

n/a

Is this Specific to Renewable Energy businesses?

No, any business looking advice and support in terms of renewable energies can become a member and seek advice.

Is this a local, regional or national support?

Regional support, covering all of NI and businesses interested in investment to NI.

Carbon Trust**Link to support information on website**

<http://www.carbontrust.com/home/>

Type of Support

Carbon Zero Northern Ireland provides technology development and innovation support to Industry and will deliver an extensive array of training courses focused on developing a skilled workforce in renewable energy in Northern Ireland.

The courses will cover the areas of:

- Renewable energy awareness for homes and business
- Renewable energy technologies including Wind, Solar, Biomass and Hydro
- Waste management
- Responsible sourcing of materials
- Sustainable construction

Current R&D under the Carbon Zero NI programme will position Northern Ireland as an international player in the sustainable development and clean energy sectors

Description of the support

The Carbon Zero NI programme is a sector wide initiative by the Further Education sector under the leadership of the South West College in Northern Ireland. This programme is supported by the Department of Employment and Learning in Northern Ireland through the Innovation Fund, Employer Support Programme.

Courses developed under the Carbon Zero NI programme will address the ever increasing need for skills and knowledge in the area of clean energy development in Northern Ireland.

For more information on the courses offered by each Further Education College under the Carbon Zero NI Programme click on any of the College logos below:

- Belfast Met
- Northwest Regional College
- South West College
- Southern Regional College

Agency Responsible for Support

Department of Employment and Learning in Northern Ireland through the Innovation Fund, Employer Support Programme.

Maximum and minimum funding available

N/A – Courses available

Is this Specific to Renewable Energy businesses?

Yes on all types of Renewable Energy

Is this a local, regional or national support?

Local Regional Northern Ireland

Other useful/relevant information

Research

The technical research will focus on three key areas of growth in Northern Ireland:

- Wind Energy
- Energy from Waste
- Clean Energy Storage

These technologies have been identified as areas that require immediate support in relation to dedicated research and development as they are evolving rapidly at both a local and international level.

CAFRE – College of Agriculture, Food & Rural Development**Link to support information on website**

<http://www.cafre.ac.uk/>

Type of Support

CAFRE offers a range of support services to ensure your time at College is both educational and enjoyable. At all campuses the support of students is a priority for College staff.

Description of the support

College of Agriculture, Food and Rural Enterprise is a public tertiary level land-based college offering training in agriculture, food technology, horticulture, equine and agri-business operating at three sites in Northern Ireland.

Agency Responsible for Support

CAFRE – College of Agriculture, Food & Rural Development

<http://www.cafre.ac.uk/>

Is this Specific to Renewable Energy businesses?

No this training is based on all types related to agriculture and environmental however

Is this a local, regional or national support?

Local Regional – Northern Ireland

Research and Development Supports**Invest NI Innovation Vouchers****Link to support information on website**

<http://www.investni.com/support-for-business/funding-for-business/funding-for-innovation-and-research-and-development.html>

Type of R&D Support

An Innovation Voucher offers you £5000 to purchase specialist knowledge from one of 39 respected universities, colleges and research organisations throughout Northern Ireland and the Republic of Ireland. This knowledge can help you to expand, improve or create new products, services and processes.

Description of the support

If yours is a small or medium-sized business you can apply for an innovation voucher to purchase specialist knowledge. This will help you to develop solutions to business issues, or improve or create products, services and processes that will help your business compete more effectively.

Typical projects we support include:

- Ideas for new or improved products, processes and services
- Product and service testing
- Access to information and expertise on new materials
- Tapping into research and scientific research

Agency Responsible for Support

Invest NI

<https://www.investni.com/>

Enterprise Ireland

<http://www.enterprise-ireland.com/en/>

Maximum and minimum funding available

£5000

Is this Specific to Renewable Energy businesses?

No all business

Is this a local, regional or national support?

This is based for all of Ireland, North & South

Other useful/relevant information

The Innovation Voucher Scheme, run by Invest NI and Enterprise Ireland, is designed to help you tap into specialist knowledge to develop forward-thinking solutions or ideas to expand, improve or create new products, services and processes. You do not need to be an Invest NI or Enterprise Ireland client company to apply.

Tech Start Up

Link to support information on website

TechStartNI <http://www.techstartni.com/>

Type of R&D Support

As a team, we work tirelessly to help our companies win customers, make key hires, and develop strategies and tactics to achieve the fastest possible growth in the value of the company.

Description of the support

We seek to be trusted peers and partners to help entrepreneurs realise their vision with experienced and timely support. With our backing, founders can focus on customer development and validating their business model.

Agency Responsible for Support

TechStartNI <http://www.techstartni.com/>

Maximum and minimum funding available

"Concept" grant (of up to £10k) and a "Concept Plus" grant (of up to £25k).

Is this Specific to Renewable Energy businesses?

No this is based on all types of Technologies

Is this a local, regional or national support?

Regional Based (Northern Ireland)

Other useful/relevant information

In a competitive basis this fund seeks to support entrepreneurs with grants directed towards exploring the viability and commercial potential of an innovative concept.

Social and Community supports (focused on not for profit)**Action Renewables****Link to support information on website**

<http://actionrenewables.co.uk/>

Type of Social Enterprise/Community Enterprise Support

Not for profit organisation

Description of the support

Action Renewables support commercial renewable energy development, develop and support European Projects, offer quality assurance to the renewable energy industry (Micro-generation Certification Scheme MCS) and provide advice and information to Government.

Agency Responsible for Support

Action Renewables <http://actionrenewables.co.uk/>

Maximum and minimum funding available

N/A

Is this Specific to Renewable Energy businesses?

As an organisation we deliver a wide range of services and activities which include supporting commercial renewable energy development, developing and supporting European Projects, offering quality assurance to the renewable energy industry and providing advice and information to Government. In addition to our current list of services we are also happy to undertake bespoke services for our clients.

Is this a local, regional or national support?

Action Renewables is a regional based organisation which is located in Northern Ireland however it has carried out work across the UK.



GREBE

Generating Renewable Energy
Business Enterprise

www.grebeproject.eu

Norway



Northern Periphery and
Arctic Programme
2014-2020



Norway

What kind of agencies offer support to SMEs?

There are a number of different agencies which support renewable energy businesses in Norway. The business support system is largely funded and organized through public funding:

- Local offices (Municipality)
- Innovation Norway
- ENNOVA – Specialist instrument on RE innovations (National Agency)
- Norwegian Research Council

Several years ago, the Norwegian Government established Enova, a public agency. Enova has become the Government's most important instrument for reaching targeted goals of energy efficiency and renewable energy production. Enova administers a series of programmes and support schemes (in the form of investment aid) covering various business areas. These include wind power, solar, Hydrogen, and energy efficiency in industry and in buildings. Enova has specific goals, quantified in terra watt hours of energy.- and there is set specific dates for these goals to be reached. Enova is provided with long-term financing. Since 2002, the Government has supplied Enova with 1.5 billion Euros. Enova has an independent board of directors and an independent administration. They decide on the best way to manage the available funds to achieve the set goals. This leads to results!

The Ministry of Energy (OED)has evaluated Enova. It has been a good reminder of the longterm character of promoting renewable energy and energy efficiency. It has been a challenge for the agency to develop good support-schemes, to recruit projects and after that to avoid cancellations. It takes time before the solar system, or the wind mill, produces energy – sometimes as much as five years. This reminds us that promoting the development towards a more environmentally friendly energy sector requires long term policies and a predictable framework.

Is it clear to the SME where they should go for support?

Researchers - The Research Council of Norway's programme on Commercialising R&D Results (FORNY2020) promotes innovation based on research results. The programme facilitates the commercialisation of results from projects conducted at publicly-funded research institutions and helps to bring the products and services to the market.

The FORNY2020 programme is designed to trigger the value-creating potential of projects conducted at publicly-funded research institutions. The programme provides funding to newly-established companies based on these projects as well as to Technology Transfer Offices (TTOs) affiliated with the research institutions.

The programme seeks to:

- Promote the establishment of new companies based on research results.
- Generate growth in existing companies by providing funding to projects based on research results.
- Enhance the professionalism and efficacy of the TTOs affiliated with universities, university colleges, hospitals and independent research institutes in their respective fields.

Entrepreneurs – Innovation Norway create value by stimulating to profitable business development throughout Norway. Our programmes and services are intended to create more successful entrepreneurs, more enterprises with capacity for growth and more innovative business clusters. Innovation Norway contributes to:

- Enhancing innovation in Norwegian enterprises and industry
- Building competitive Norwegian enterprises at both domestic and international markets
- Promoting Norwegian enterprises
- Promoting Norway as an attractive tourist destination
- Securing development in rural areas
- Transforming ideas into successful business cases
- Promote interaction between enterprises, knowledge communities and R&D institutions

Is there one agency which is the first place for businesses to go?

The Environmental Portal – is an online tool which gives an overview of the variety of supports available to all entrepreneurs and researchers in the renewable energy sector.

Are business supports restricted to certain types of business, or enhanced for certain types of SMEs (e.g. only available for manufacturing or for exporters)?

There is a particular focus on businesses with export potential.

Are there special supports for RE businesses?

The Research Council of Norway has granted funding of 8 new Centres for Environmental-friendly Energy Research.

Financial Supports

Start UP Grants

Link to support information on website

Innovation Norway www.innovasjon Norge.no

Type of Finance Support

Business Finance support for start ups

Description of the support

Money to establish business

Agency Responsible for Support

Innovation Norway www.innovasjon Norge.no

Maximum and minimum funding available

50,000 to 100,000 NOK / €5,000-€10,000

Is this Specific to Renewable Energy businesses?

No

Is this a local, regional or national support?

National Programme – with regional operators

Business Loans

Link to support information on website

Innovation Norway www.innovasjon Norge.no

Type of Finance Support

Loans

Description of the support

IN can give finance support to businesses after application:

- 1) Short Time loans
- 2) Investments

Agency Responsible for Support

Innovation Norway www.innovasjon Norge.no

Maximum and minimum funding available

Subject to need (limited) in cooperation with bank loans.

Is this Specific to Renewable Energy businesses?

No

Is this a local, regional or national support?

National with regional operators

Narvik Capital

Link to support information on website

Narvik Kapital www.Fpn.no

Type of Finance Support

Seed-Funding

Description of the support

Funding to start-ups that has a growth potential in combination with other funding

Step by step funding/investment

Agency Responsible for Support

Narvik Kapital www.Fpn.no

Maximum and minimum funding available

Takes per cent ownership in companies due to investment

Is this Specific to Renewable Energy businesses?

No

Is this a local, regional or national support?

Local support

Forte Narvik

Link to support information on website

Forte Narvik www.Forte.narvik.no

Type of Finance Support

Seed-Funding/Equity Funding

Description of the support

Funding to start-ups that has a growth potential in combination with other funding

Step by step funding/investment

Agency Responsible for Support

Forte Narvik www.Forte.narvik.no

Maximum and minimum funding available

Dependent on investment strategy

Is this Specific to Renewable Energy businesses?

No

Is this a local, regional or national support?

Local support

Norinnova Invest

Link to support information on website

Norinnova Invest www.Norinnova.invest.no

Type of Finance Support

Seed Funding/Equity Investment

Description of the support

Funding to start-ups that has a growth potential in combination with other funding

Step by step funding/investment

Agency Responsible for Support

Norinnova Invest www.Norinnova.invest.no

Maximum and minimum funding available

Dependent on investment strategy

Is this Specific to Renewable Energy businesses?

No

Is this a local, regional or national support?

Local support

Equity Investment

Link to support information on website

Equity Funding Norway

Type of Finance Support

Investment

Description of the support

Growth Business Investment

Agency Responsible for Support

- 1) Hitech Vision Private Equity
- 2) Norvestor Equity
- 3) FSN Capital
- 4) Altor Equity

Maximum and minimum funding available

Dependent on Investment Strategy

Is this Specific to Renewable Energy businesses?

No

Is this a local, regional or national support?

National

Venture Capital Investment

Link to support information on website

Venture Capital Funding Norway

Type of Finance Support

Investment

Description of the support

Investment in start-up technology business

Agency Responsible for Support

- 1) Energy venture
- 2) Northzone Venture
- 3) Verdan capital

Maximum and minimum funding available

Dependent on Investment Strategy

Is this Specific to Renewable Energy businesses?

No

Is this a local, regional or national support?

National

Taxation for businesses

Green Certificates

Link to support information on website

www.Enova.no

Type of Taxation or Welfare Support

Extra income: 1.5-2 Euro Cent/KWh

Description of the support

Incentives to produce more renewable energy in Norway

Agency Responsible for Support

Skatteetaten

Maximum and minimum funding available

Based on production

Is this Specific to Renewable Energy businesses?

Relevant for the larger Solar PV Systems

Is this a local, regional or national support?

National

Welfare supports for businesses

Enova-Projects

Link to support information on website

Enova www.Enova.no

Type of Taxation or Welfare Support (be specific)

Renewable Energy Support Projects

Description of the support

- Development and introduction of new energy and technologies in the market.
- Energy Efficiency projects
- Households – phase out oil boilers
- Energy recovery (Industry)
- Subsidy Programmes to increase the demand of renewable energy
- Energy measures
- Making products available in the market
- Testing of products
- Nationwide information and advisory service

Agency Responsible for Support

Enova www.Enova.no

Maximum and minimum funding available

Dependent on programme/Incentives

Is this Specific to Renewable Energy businesses?

Yes

Is this a local, regional or national support?

National

National Investment Support**Link to support information on website**

Enova www.Enova.no

Type of Taxation or Welfare Support

Welfare support to private households and commercial buildings

Description of the support

- 1) Private Households:
 - a) Solar Heating: Euro 1000 + Euro 20/m² collector area
 - b) Solar Electricity: Euro 1000 + Euro 12,5/KWh
- 2) Commercial buildings:
 - a) Solar Heating: Euro 20/m² collector area
 - b) Solar electricity: No investment support – up to 50% if new technology

Agency Responsible for Support

Enova www.Enova.no

Maximum and minimum funding available

Dependent on private household or commercial building and energy production

Is this Specific to Renewable Energy businesses?

Yes

Is this a local, regional or national support?

National

Concessions for businesses**Concessions for Hydro Power Plants****Link to support information on website**

www.Oed.no www.NVE.no

Oil and Energy Department/ Norwegian Water resources and Energy Directorate

Type of Taxation or Welfare Support (be specific)

Concessions for Energy Production – Hydro Power Plants

Description of the support

Major Development Projects – The King in Council has been given licensing authority for projects pursuant to the Watercourse Regulation Act and developments with installations exceeding 10MW pursuant to the Water Resources Act. The NVE handles the work during the application process.

Hydro Power Plants exceeding 10MW or with an annual production exceeding 50GWh are always subject to clarification via-a-via the Master Plan for Water Resources. Projects which require processing pursuant to the Master Plan for Water Resources must submit an application to the NVE, which will process it in collaboration with the Directorate for Nature Management.

The Ministry will prepare the project for the King in Council and present a recommendation. The recommendation is drawn up based on the application, The NVE's recommendation, the opinion of affected ministries and local authorities, as well as the Ministry's own assessments.

Agency Responsible for Support

www.NVE.no

Maximum and minimum funding available

No funding available

Is this Specific to Renewable Energy businesses?

Yes

Is this a local, regional or national support?

National

Concessions for Small Hydro Power Plants**Link to support information on website**

www.Oed.no www.NVE.no

Type of Taxation or Welfare Support (be specific)

Concession for Energy Production – Small Hydro Power Plants

Description of the support

The NVE has been delegated the licensing authority pursuant to the Water Resources Act for power plants with an installed capacity below 10MW and without water regulation exceeding the licensing limit in the Watercourse Regulation Act.

Small Hydro Power Plants are subject to somewhat simpler procedures than major projects, which contribute to faster processing for these projects. The Ministry has published Guidelines for SHPP with the aim of facilitating regional planning and strengthening the basis for comprehensive, efficient and predictable licence processing.

Agency Responsible for Support

www.NVE.no

Maximum and minimum funding available

No funding available

Is this Specific to Renewable Energy businesses?

Yes

Is this a local, regional or national support?

National

Soft supports**Innovation Norway – Mentoring Programme****Link to support information on website**

www.innovasjon Norge.no

Type of Support

Mentoring Programme

Description of the support

Focus on export

Agency Responsible for Support

National programme with international and regional operators on contract

Maximum and minimum funding available

30 – 100 hours free of charge

Is this Specific to Renewable Energy businesses?

Some of the offices can provide specific services to renewable energy businesses

Is this a local, regional or national support?

Regional, national and international service

Norwegian Solar Energy Society**Link to support information on website**

www.solenergi.no

Type of Support

Energy, Business and R&D Policy

Networks

Description of the support

Focus on:

- 1) Solar PV
- 2) Solar Electricity
- 3) Solar Heating
- 4) Networking activities
- 5) Promotes increased knowledge and use of solar energy
- 6) Business opportunities
- 7) Research and Development Projects

Agency Responsible for Support

Norsk Solenergiforening – Norwegian Solar Energy Society

Maximum and minimum funding available

No funding available

Is this Specific to Renewable Energy businesses?

Yes

Is this a local, regional or national support?

National/Regional

Research and Development supports**UIT – Arctic University, Technology Department****Link to support information on website**

www.Uit.no

Type of R&D Support

Technology

Description of the support

Research on Renewable Energy

Agency Responsible for Support

UIT – Technology Department

Is this Specific to Renewable Energy businesses?

No

Is this a local, regional or national support?

Regional Institution with local technology department

NORUT NARVIK**Link to support information on website**

www.Norut.no

Type of R&D Support

Technology

Description of the support

Research on Renewable Energy – Solar PV

Agency Responsible for Support

Norut Narvik

Is this Specific to Renewable Energy businesses?

Own RE Department

Is this a local, regional or national support?

Local Research Institution

Social and Community Supports (focused on not for profit in RE area)

None

Other**SIVA INCUBATOR****Link to support information on website**

www.Fpn.no

Type of Support

Focus on Start-Ups

Description of the support

- Reduced office price
- Business consult (25% payment – 75% support)
- Development of Business Model
- Funding

Agency Responsible for Support

SIVA/NSP

Maximum and minimum funding available or maximum value of funding if in kind (or alternative measure)

No funding available

Is this Specific to Renewable Energy businesses?

No

Is this a local, regional or national support?

SIVA = National Programme with local/regional operators on contract (NSP – department)



GREBE

Generating Renewable Energy
Business Enterprise

www.grebeproject.eu

Scotland



Northern Periphery and
Arctic Programme
2014-2020



Scotland

What kind of agencies offer support to SMEs?

Support predominantly comes from central Government, particularly in regard to financial subsidy. This is disseminated at a variety of levels from a UK wide scale to regional agencies, such as Highlands and Islands Enterprise.

QUANGOs and NGOs also provide support to SMEs, the Energy Saving Trust being one of the key agencies in this field.

Membership organisations, such as the Orkney Renewable Energy Forum (OREF), seek to bring individuals and small business together to help achieve certain aims. For example, OREF aims to address strategic issues affecting Orkney's renewables sector through collaboration with members, the local community, key stakeholders, and academics and researchers.

Smaller charities, such as Community Energy Scotland, also aim to provide advice and assistance to SMEs in this sector.

Is it clear to the SME where they should go for support?

There is a Government website (<https://www.mygov.scot/funding-opportunities/>) which lists various funding opportunities; however, this does not necessarily contain all possible funding sources.

If there is a community element to the project Local Energy Scotland clearly lays out how they can get support (<http://www.localenergyscotland.org/>).

Is there one agency which is the first place for businesses to go?

This depends on the type of venture:

- If it is a community based business then Local Energy Scotland is the first calling point.
- If it is innovation or research based Scottish Enterprise, or its subsidiaries, is usually the most relevant place.
- For direct subsidy for electricity generated through the feed-in tariff scheme the Energy Saving Trust is the first point of contact.

Are business supports restricted to certain types of business, or enhanced for certain types of SMEs (e.g. only available for manufacturing or for exporters)?

In Scotland there is a strong focus on community renewable energy projects. These have additional funds available to them through the Community and Renewable Energy Scheme (CARES). Through collaboration with communities this fund can be accessed by others.

The variety of business supports means some SMEs may not necessarily be eligible to all supports. For example many supports are either exclusively for R&D or specifically state such projects are not eligible.

Are there special supports for RE businesses?

Yes, probably the most important of these is the subsidy system for electricity generated by renewable sources through the feed-in tariff for small scale projects (under 5 MW) and ROC (now CfD mechanism) (for larger projects). However, feedback from industry shows that the reduced support of government is having a very negative impact. One of our respondents to another element of GREBE termed these changes as a Government "shutdown of renewables", so although there are specific supports in place the strength of these is becoming questionable.

Business supports available in Scotland are described in more detail in the coming pages under the following themes:

- Financial Support (grants, loans, equity investment)
- Taxation or welfare supports or concessions for businesses
- Soft supports e.g. mentoring, training, specialist advice, networks
- Research and Development supports
- Social and Community supports (focused on not for profit)
- Other- e.g. Incubation space or office space

Financial Supports

UK Green Investment Bank plc (GIB)

Link to support information on website

<http://www.greeninvestmentbank.com/>

Type of Finance Support

Both fund and direct investment.

Description of the support

This funding institution was created by the UK Government to attract private sector investment in areas relating to environmental preservation and improvement – of which renewable energy are a major element. Financing can be for a wide variety of projects including the deployment of new technologies, community scale projects as well as larger renewable energy developments such as large offshore wind farms.

Agency Responsible for Support

UK Green Investment Bank plc

<http://www.greeninvestmentbank.com/>

Maximum and minimum funding available

Backs small project of £2m to large projects of £1bn.

Is this Specific to Renewable Energy businesses?

Both renewables and energy efficiency.

Is this a local, regional or national support?

National

Other useful/relevant information

So far Scotland has seen very little benefit from this scheme.

Scottish Innovative Foundation Technologies fund

Link to support information on website

<http://www.scottish-enterprise.com/services/develop-new-products-and-services/sift/overview>

Type of Finance Support

Grant

Description of the support

The aim of the fund is to help drive down the cost of energy and develop the offshore wind sector in Scotland through innovation in deep-water offshore wind foundation design and installation. Although the funding is open to larger organisations it is also available for SMEs.

Agency Responsible for Support

Scottish Enterprise

<http://www.scottish-enterprise.com/services/develop-new-products-and-services/sift/whats-involved>

Maximum and minimum funding available

Up to £15 million available, rates of support vary depending on project

Is this Specific to Renewable Energy businesses?

Yes – offshore renewables

Is this a local, regional or national support?

Regional (Scotland only)

InnovFin Energy Demo Projects

Link to support information on website

<http://www.eib.org/products/blending/innovfin/products/energy-demo-projects.htm>

Type of Finance Support

Provides loans or loan guarantees

Description of the support

InnovFin Energy Demo Projects provides loans or loan guarantees between €7.5 million and €75 million to first-of-a-kind commercial-scale demonstration projects in the fields of renewable energy and hydrogen and fuel cells, helping to bridge the gap from demonstration to commercialisation.

Agency Responsible for Support

European Investment Bank

<http://www.eib.org/index.htm>

Maximum and minimum funding available

Loans and guarantees from €7.5 million to €75 million. The total project costs must be a minimum of €15 million.

Is this Specific to Renewable Energy businesses?

Yes

Is this a local, regional or national support?

European wide

Barclays Renewable Energy Fund

Link to support information on website

<https://www.mygov.scot/barclays-renewable-energy-fund/>

Type of Finance Support

Provides loans

Description of the support

The £100 million fund for loans is designed to help farmers in the UK meet the costs of renewable energy initiatives like wind farms, solar panels, organic waste power and hydro plants.

Agency Responsible for Support

Barclays bank

<https://www.barclayscorporate.com/>

Maximum and minimum funding available

A term loan of £25,000 and above is available.

Is this Specific to Renewable Energy businesses?

Yes

Is this a local, regional or national support?

National

Other useful/relevant information

With the changes to the feed-in tariff the effectiveness of this scheme is likely to be reduced.

EIB - European Fund for Strategic Investments (EFSI)

Link to support information on website

<http://www.eif.org/index.htm>

Type of Finance Support

Both debt and equity products

Description of the support

EFSI is an EU initiative which aims to help overcome the investment gap in the EU by mobilising private financing for strategic investments.

Agency Responsible for Support

SMEs interested in EFSI transactions financed via the EIF (European Investment Fund) should refer to information on EIF financial intermediaries:

http://www.eif.org/what_we_do/where/gb/index.htm

Maximum and minimum funding available

No specific maximum or minimum requirements in place.

Is this Specific to Renewable Energy businesses?

No

Is this a local, regional or national support?

National

Other useful/relevant information

After the UK exit from Europe the status of this fund in Scotland is uncertain

District Heating Loan Fund**Link to support information on website**

<https://www.mygov.scot/district-heating-loan-fund/>

Type of Finance Support

Provides loans

Description of the support

Loans offered on a commercial basis for both renewable and low carbon, low emission technologies in Scotland, for heating distributed through a network of pipes to provide space and water heating in homes or offices.

Loans of up to £500,000 per project are available over a 10 or 15 year period.

Technical support is also available through the programme.

The interest rate on loans is set at 3.5%

Agency Responsible for Support

Energy Saving Trust Scotland

<http://www.energysavingtrust.org.uk/scotland>

Maximum and minimum funding available

£500,000 which may be repaid over either a 10 or 15 year period. Loan terms for larger projects that exceed £500,000 may be considered on a case by case basis.

Is this Specific to Renewable Energy businesses?

Although it is designed to promote renewable energy any business may apply.

Is this a local, regional or national support?

Regional (Scotland)

Resource Efficient Scotland SME loans**Link to support information on website**

<http://www.resourceefficientscotland.com/content/loans-small-medium-businesses>

Type of Finance Support

Loans

Description of the support

SME loans of £1,000 to £100,000 are available to help businesses to reduce their carbon emissions, save money and increase their competitiveness. Funded by the Scottish Government, the scheme aims to support businesses that are looking to reduce costs through improved energy, material resource and water efficiency.

Agency Responsible for Support

Resource Efficient Scotland provides advice and support to prospective applicants. The Energy Saving Trust administers the scheme and is responsible for the assessment and processing of applications.

<http://www.energysavingtrust.org.uk/scotland>

Maximum and minimum funding available

£1,000 to £100,000

Is this Specific to Renewable Energy businesses?

A comprehensive list of eligible measures qualify for the loan, including; renewable technologies, a range of commercial and industrial energy efficiency measures, building fabric improvements, waste reduction and water saving equipment.

Is this a local, regional or national support?

Regional (Scotland)

Scottish Investment Bank**Link to support information on website**

<https://www.scottish-enterprise.com/about-us/what-we-do/investment/sib>

Type of Finance Support

Venture or Loans Fund

Description of the support**The Scottish Venture Fund**

The Scottish Venture Fund invests in companies from start-ups, early-stage to expanding businesses seeking funding to develop products and/or markets.

This fund can invest alongside private sector investors on equal terms, up to a maximum of 50% of the total funding package on a commercial basis. Match funding will be provided in the range from £10,000 up to £2 million, as part of a total deal size ranging from £20,000 to £10 million.

<https://www.scottish-enterprise.com/services/attract-investment/scottish-venture-fund/svf-overview>

Scottish Loan Fund

The Scottish Loan Fund provides loans ranging from £250,000 to £5 million to small and medium-sized enterprises (SMEs). It is designed for businesses that are looking for capital to help drive their expansion plans. It provides mezzanine finance, a product that sits between debt and equity and is used to fund companies with positive cash flow and significant growth ambitions.

<https://www.scottish-enterprise.com/services/attract-investment/scottish-loan-fund/overview>

Agency Responsible for Support

Scottish Enterprise

Maximum and minimum funding available

50% of the total funding package from £20,000 to £10 million for the Venture Fund.

Loans ranging from £250,000 to £5 million to SMEs for the Loan Fund.

Is this Specific to Renewable Energy businesses?

Not specific to Renewable Energy, but to SME's in general.

Is this a local, regional or national support?

Regional (Scotland)

Highland Venture Capital**Link to support information on website**

<http://www.hie.co.uk/business-support/funding/highland-venture-capital/default.html>

Type of Finance Support

Equity Finance

Description of the support

Highland Venture Capital was formed in 2006 with the aim of providing a source of equity finance for growing or new-start businesses.

Our investment criteria are:-

- Companies requiring £75k or greater
- A preference for companies operating in the Highlands
- A preference for companies wanting to supply their goods and services beyond the Highlands

Agency Responsible for Support

Highlands & Islands Enterprise (HIE)

Maximum and minimum funding available

Minimum £75,000

Is this Specific to Renewable Energy businesses?

No.

Is this a local, regional or national support?

Regional (Scotland) but targeted at local companies (Highlands & Islands)

Other useful / relevant information

A preference for companies wanting to supply their goods and services beyond the Highlands.

Taxation or welfare supports or concessions for businesses**Enterprise Investment Scheme****Link to support information on website**

<https://www.gov.uk/government/publications/the-enterprise-investment-scheme-introduction>

Type of Taxation or Welfare Support (be specific)

Tax and income gains relief

Description of the support

The purpose of the support is to encourage investment to companies not listed on the stock exchange and often have a high level of associated. The headline benefits are:

- 30% upfront Income tax relief up to maximum investment of £1 million, which can be carried back to the previous tax year
- 100% Inheritance Tax relief (provided the investments have been held for at least 2 years at time of death)
- Capital gains tax deferral for the life of the investment
- Tax-free growth
- Tax relief from investment losses

Agency Responsible for Support

HM Revenue and Customs and administered through their Small Company Enterprise Centre office.

<https://www.gov.uk/government/organisations/hm-revenue-customs>

Maximum and minimum funding available

The maximum tax relief is £300,000

Is this Specific to Renewable Energy businesses?

No

Is this a local, regional or national support?

National

Seed Enterprise Investment Scheme**Link to support information on website**

<https://www.gov.uk/guidance/seed-enterprise-investment-scheme-background>

Type of Taxation or Welfare Support (be specific)

Tax and income gains relief

Description of the support

The scheme aims to encourage investment in start-ups which are otherwise deemed too risky. The headline benefits are:

- Investors get 50% income tax relief on the cost of shares, for a maximum annual investment of £100,000.
- No Capital Gains Tax is paid on profits earned on shares held for more than three years. Capital gains which are realised before three years has expired, but which are reinvested into qualifying SEIS shares, are also exempt from Capital gains tax (again £100,000 limit).
- If the company goes bankrupt, investors may claim loss relief on their investment which is equal to half of their total investment multiplied by their tax rate.
- 100% Inheritance Tax relief.

Agency Responsible for Support

HM Revenue and Customs and administered through their Small Company Enterprise Centre office.

<https://www.gov.uk/government/organisations/hm-revenue-customs>

Maximum and minimum funding available

Cannot raise more than £150,000 through the scheme

Is this Specific to Renewable Energy businesses?

No

Is this a local, regional or national support?

National

Low carbon heat expert support – Scottish Enterprise**Link to support information on website**

<https://www.scottish-enterprise.com/services/develop-new-products-and-services/low-carbon-heat-support/overview>

Type of Taxation or Welfare Support (be specific)

Support through workshops

Description of the support

Low Carbon Heat Expert Support programme offers Scottish-based companies access to free support through a series of workshops and up to two days one-to-one technical market support offering advice and guidance on how to make the most of the opportunities in low carbon heat.

This advice could focus on:

- Market entry requirements
- Your company's current capabilities (e.g. skills, processes) and its potential in relation to current low carbon heat opportunities
- Suitability of a specific product to the sector
- Market/supply chain positioning and contacts

Agency Responsible for Support

Scottish Enterprise

Maximum and minimum funding available

Not applicable

Is this Specific to Renewable Energy businesses?

No

Is this a local, regional or national support?

Regional (Scotland)

High Growth Start Up

Link to support information on website

<https://www.scottish-enterprise.com/services/support-for-entrepreneurs/high-growth-support/whats-involved>

Type of Taxation or Welfare Support (be specific)

Welfare support service

Description of the support

High Growth Start Up service can offer intensive support to:

- Develop your business plan
- Seek funders, investors, loans and grants
- Build your management and non-executive teams
- Protect your intellectual assets

Agency Responsible for Support

Scottish Enterprise

Maximum and minimum funding available

Not applicable

Is this Specific to Renewable Energy businesses?

No – it is open to any business which wants to scale up

Is this a local, regional or national support?

Regional (Scotland)

Soft supports e.g. mentoring, training, specialist advice, networks

Low Carbon Skills Fund

Link to support information on website

<https://www.skillsdevelopmentscotland.co.uk/what-we-do/our-products/low-carbon-skills-fund/>

Type of Support

Fund for training

Description of the support

The LCSF enables small businesses from any sector to access training in low carbon methods. Up to £5,000 is available. We refund up to 50% of employee training costs, up to a maximum of £1,000 per employee. Training might include:

- Energy efficiency measures
- Waste management and re-use
- Energy assessors or advisers
- Sustainable resource management
- Installing microgeneration products such as biomass boilers, ground source heat pumps, or solar panels.

Agency Responsible for Support

Skills Development Scotland

<https://www.skillsdevelopmentscotland.co.uk/>

Maximum and minimum funding available

£5,000

Is this Specific to Renewable Energy businesses?

It relates to renewables but non-renewable businesses can apply

Is this a local, regional or national support?

Regional (Scotland only)

2015 – 2018 Business Plan**Link to support information on website**

<http://www.scottish-enterprise.com/about-us/what-we-do/business-plan>

<https://www.scottish-enterprise.com/services>

Type of Support

Development strategy

Description of the support

Scottish Enterprise is a sponsored (but non-departmental) Scottish Government body. The 2015 – 2018 Business plan sets out their approach to delivering economic growth for Scotland. Whilst not exclusively aimed at renewable energy it is relevant to many schemes. Particularly pertinent is the aim to encourage innovation in SMEs.

Agency Responsible for Support

Scottish Enterprise

www.scottish-enterprise.com

Maximum and minimum funding available

N/A

Is this Specific to Renewable Energy businesses?

No

Is this a local, regional or national support?

Regional (Scotland only)

Marine Energy Parks**Link to support information on website**

<http://www.hi-energy.org.uk/hi-marine-energy-park.htm>

Type of Support

Brings stakeholders together and creates a supportive business environment.

Description of the support

Marine Energy Parks (MEPs) are a UK government initiative that brings together local and national government, Local Enterprise Partnerships, technology developers, academia and industry for the development of the marine energy sector, with the aim of creating a supportive business environment for accelerating the commercialisation of wave and tidal technology. MEPs should help provide an arena where SMEs can provide their services to this growing sector.

Agency Responsible for Support

HI Energy

<http://www.hi-energy.org.uk>

Maximum and minimum funding available

N/A

Is this Specific to Renewable Energy businesses?

It can benefit others but primarily yes

Is this a local, regional or national support?

National but region/local marine energy parks

Scotland's International Technology and Renewable Energy Zone (ITREZ)**Link to support information on website**

<http://www.scottish-enterprise.com/services/develop-new-products-and-services/itrez/overview>

Type of Support

Provides SMEs with the opportunity to have a base closer to large industry and build partnerships

Description of the support

The project aim is to bring business and academia together by stimulating co-location, innovation, and investment in Scotland's offshore renewable energy sector. Centred in Glasgow, ITREZ has two purpose built buildings: 'inovo', and the Technology and Innovation Centre, acting as a hub for around 450 renewables engineers and project managers, and 850 energy academics and researchers. For SMEs the project allows them to be located closer to large industry within ITREZ.

Agency Responsible for Support

Scottish Enterprise

Maximum and minimum funding available

N/A

Is this Specific to Renewable Energy businesses?

Yes - offshore

Is this a local, regional or national support?

Regional (Scotland only)

Research and Development supports

European Marine Energy Centre (EMEC)

Link to support information on website

<http://www.emec.org.uk/>

Type of R&D Support

Provides test facilities for wave and tidal devices.

Description of the support

EMEC is an accredited test and research centre for wave and tidal stream devices based in Orkney, off the north coast of mainland Scotland. It provides developers with the opportunity to test full-scale prototype devices in high energy wave and tidal environments. In addition to full scale test sites there are also nursery sites for testing of small scale prototypes.

Agency Responsible for Support

EMEC

<http://www.emec.org.uk/>

Maximum and minimum funding available

Rather than providing funding this is testing enabler scheme.

Is this Specific to Renewable Energy businesses?

Yes

Is this a local, regional or national support?

Although the test centre is based in Orkney it has been used by many developers (including international).

Other useful/relevant information

As a result of EMEC there has been substantial growth in Orkney based around or stemming from the marine energy industry (including enterprises set up for servicing devices).

SMART: Scotland

Link to support information on website

<http://www.scottish-enterprise.com/services/develop-new-products-and-services/smart-scotland/overview>

Type of R&D Support

Provides grants to SMEs to help undertake technical feasibility studies and research and development (R&D) projects that have a commercial endpoint.

Description of the support

Feasibility studies

Supports up to 70% of the eligible costs for a small SME and up to 60% of the eligible costs for a medium SME:

- A Small SME has less than 50 employees and a turnover of less than €10m
- A Medium SME has 50-250 employees and a turnover of less than €50m

Studies must last between 6 and 18 months, and the maximum grant is £100,000. One third of the grant is paid upfront when the project starts. The remainder is paid quarterly in arrears against claims submitted.

R&D Projects

This covers projects that aim to develop a pre-production prototype of a new product or process. Support is available at up to 35 per cent of the eligible project costs. Projects must last between 6 and 36 months, and the maximum grant is £600,000. The grant is paid quarterly in arrears and minimum total project cost is £75,000.

Agency Responsible for Support

Scottish Enterprise

<http://www.scottish-enterprise.com/services/develop-new-products-and-services/smart-scotland/overview>

Maximum and minimum funding available

For feasibility maximum £100k, for R&D £600k

Is this Specific to Renewable Energy businesses?

No

Is this a local, regional or national support?

Regional (Scotland only)

Research & Development (R&D) Grant

Link to support information on website

<https://www.scottish-enterprise.com/services/develop-new-products-and-services/rd-grant/overview>

Type of R&D Support

Grant

Description of the support

Projects typically last 6 to 36 months and the grant can cover up to 50% of the project costs. The project must represent a significant innovation for the company concerned and significant risks should be associated with the challenge of developing a new product, process or service. It's got to be new, they don't support projects where the work has already started or commercial contracts are in place.

Grants are available at:

- For ALL SMEs applying for a grant in excess of £100k, SE is providing an intervention rate of 35% up to 50%.
- Grants above £100,000 must demonstrate a positive impact on R&D jobs in Scotland.

Agency Responsible for Support

Scottish Enterprise

Maximum and minimum funding available

No limit

Is this Specific to Renewable Energy businesses?

No, it is open to new research and development

Is this a local, regional or national support?

Regional (Scotland)

Other useful / relevant information?

An understanding is required to why the support is needed and consequences if support isn't available.

Scottish Energy Laboratory**Link to support information on website**

<https://www.scottish-enterprise.com/services/develop-new-products-and-services/scottish-energy-laboratory/overview>

Type of R&D Support

Energy testing and demonstrating capabilities

Description of the support

The Scottish Energy Laboratory (SEL) gives national and international companies access to Scotland's key. Through the SEL identify test facilities and services such as:

- Wind tunnels and wave tanks
- High voltage network connection
- Mechanical testing of large components
- Performance testing of energy conversion and storage technologies
- Electrical testing of motors, generators and power electronics

Agency Responsible for Support

Scottish Enterprise

Maximum and minimum funding available

Not applicable

Is this Specific to Renewable Energy businesses?

No, it is specific to the entire energy sector

Is this a local, regional or national support?

National and international

Other useful / relevant information?

It includes capabilities like the European Marine Energy Centre (EMEC) in Orkney, International Technology & Renewable Energy Zone (ITREZ) in Glasgow, the Energy Technology Centre in East Kilbride, the Hydrogen Office at Energy Park Fife and the Energy Technology Partnership across 12 Scottish Universities.

High-Growth Spinout Programme

Link to support information on website

<https://www.scottish-enterprise.com/services/support-for-entrepreneurs/high-growth-spinout-programme/overview>

Type of R&D Support

Funding and support

Description of the support

The High-Growth Spinout Programme helps researchers to take their ideas and inventions from the lab to the global marketplace by awarding funding and support.

High-Growth Spinout Programme awards cover 100% of direct project costs prior to company formation. The programme does not pay overhead costs. Support is divided into three phases, with progress from one phase to the next being dependent on rigorous assessment. Payments are made quarterly, subject to satisfactory progress being made on the project.

Agency Responsible for Support

Scottish Enterprise

Maximum and minimum funding available

No limit set

Is this Specific to Renewable Energy businesses?

No

Is this a local, regional or national support?

Regional (Scotland)

Other useful / relevant information?

The next call for applications is 17th May 2017

Social and Community supports

Community And Renewable Energy Scheme (CARES)

Link to support information on website

<http://www.localenergyscotland.org/funding-resources/funding/applying-to-cares/>

Type of Social Enterprise/Community Enterprise Support (be specific)

For the development of locally-owned renewable energy projects which provide wider community benefits.

Description of the support

The scheme is aimed at renewable projects that offer significant community engagement and benefit, providing loans towards the high risk, pre-planning consent stages of renewable energy projects. The Scottish Government's Community Energy Policy Statement and Good Practice for community benefit and shared ownership means all CARES applications require a degree of community ownership.

Agency Responsible for Support

Local energy Scotland <http://localenergyscotland.org/>

Maximum and minimum funding available

Up to £150,000

Is this Specific to Renewable Energy businesses?

Yes but only locally-owned ones

Is this a local, regional or national support?

Regional (Scotland only)

Community Energy Scotland

Link to support information on website

<http://www.communityenergyscotland.org.uk/index.asp>

Type of Social Enterprise/Community Enterprise Support

Facilitates knowledge transfer and can also provide consultancy

Description of the support

CES is a Scottish registered charity that provides support throughout the process of community renewable energy developments. The charity is member based and facilitates knowledge transfer through partners.

Agency Responsible for Support

Community Energy Scotland

Maximum and minimum funding available

N/A

Is this Specific to Renewable Energy businesses?

Yes

Is this a local, regional or national support?

Regional (Scotland only)

Local Energy Scotland

Link to support information on website

<http://www.localenergyscotland.org>

Type of Social Enterprise/Community Enterprise Support (be specific)

Advice

Description of the support

Offers a range of support for community and social enterprises who want to develop renewables. This includes information on renewable technologies and information on how to apply for funding.

Agency Responsible for Support

Local Energy Scotland

Maximum and minimum funding available

N/A

Is this Specific to Renewable Energy businesses?

Yes

Is this a local, regional or national support?

Regional (Scotland only)

Highlands and Islands Shared Ownership Support**Link to support information on website**

<http://www.hie.co.uk/community-support/community-energy/shared-ownership-of-renewables.html>

Type of Social Enterprise/Community Enterprise Support (be specific)

Shared Ownership Programme

Description of the support

Highlands and Islands Enterprise are supporting a Shared Ownership Programme to accelerate Shared Ownership projects. The programme will undertake the following activities.

- Community based workshops and training
- Webinars
- One to one support
- Provision of specialist technical, financial and legal support
- Resources and guidance tools to accelerate decision making

Agency Responsible for Support

Highlands & Islands Enterprises (HIE)

Maximum and minimum funding available

Not applicable

Is this Specific to Renewable Energy businesses?

Yes

Is this a local, regional or national support?

Local (Highlands & Islands)

Low Carbon Infrastructure Transition Programme (LCITP)

Link to support information on website

<http://www.gov.scot/Topics/Business-Industry/Energy/Action/lowcarbon/LCITP>

Type of Social Enterprise/Community Enterprise Support (be specific)

Development support, expert advice and funding

Description of the support

Launched in early 2015, the Low Carbon Infrastructure Transition Programme LCITP is a new working partnership between the Scottish Government, Highlands and Islands Enterprise (HIE), Scottish Enterprise, Scottish Futures Trust and sector specialists.

It is aligned to the Scottish Government's commitment to the transition to the low carbon economy, and offers a range of support mechanisms. The Programme aims to support the development of substantive private, public and community low-carbon projects across Scotland through the provision of development support, expert advice and funding. It is designed to ensure that investment results in defined impacts for communities.

Agency Responsible for Support

Highlands & Islands Enterprises (HIE)

Maximum and minimum funding available

Not applicable

Is this Specific to Renewable Energy businesses?

No

Is this a local, regional or national support?

Local (Highlands & Islands)

CARES plus

Link to support information on website

<http://www.hie.co.uk/community-support/community-energy/cares-plus.html>

Type of Social Enterprise/Community Enterprise Support (be specific)

Shared Ownership Programme

Description of the support

It's a pilot 'Fast-Track' programme of support for selected community energy projects in the Highlands and Islands. It will work intensively with a limited number of advanced community energy projects to help them achieve key milestones towards financial close and installation. HIE have commissioned Community Energy Scotland (CES) to deliver this programme, which is provided at no cost to eligible organisations

Agency Responsible for Support

Community Energy Scotland (CES)

Maximum and minimum funding available

Not applicable

Is this Specific to Renewable Energy businesses?

Yes

Is this a local, regional or national support?

Local (Highlands & Islands)

Scottish Communities Development Centre (SCDC) Community Support**Link to support information on website**

<http://www.scdc.org.uk/what/supporting-communities/>

<http://www.hie.co.uk/community-support/community-support/default.html>

Type of Social Enterprise/Community Enterprise Support (be specific)

Dependent on the needs of the community

Description of the support

The nature of this support will vary depending on the particular needs or circumstances of the participating groups, but may include:

- advice, guidance and signposting
- access to tools and resources
- training delivery
- mentoring / practical support
- connecting and networking.

Agency Responsible for Support

Highlands & Islands Enterprises (HIE)

Maximum and minimum funding available

Not applicable

Is this Specific to Renewable Energy businesses?

No

Is this a local, regional or national support?

Local (Highlands & Islands)

Other Types of Support**Contracts for Difference****Link to support information on website**

<https://www.gov.uk/government/collections/electricity-market-reform-contracts-for-difference>

Type of Support

Payment for generating renewable electricity

Description of the support

A Contract for Difference (CFD) is a private law contract between a low carbon electricity generator and the Low Carbon Contracts Company (LCCC), a government-owned company. A generator party to a CFD is paid the difference between the 'strike price' – a price for electricity reflecting the cost of investing in a particular low carbon technology – and the 'reference price' – a measure of the average market price for electricity in the GB market.

To win a contract for difference renewable schemes have to bid against each other.

Contracts for Difference are the main source of subsidy for renewable projects greater than 5 MW

Agency Responsible for Support

Department of Energy and Climate Change through the Low Carbon Contracts Company
<https://lowcarboncontracts.uk/>

Maximum and minimum funding available or maximum value of funding if in kind (or alternative measure)

Depends on several factors including renewable type and the contract decided. Less mature renewables are paid more. The payments are given per MWh of electricity generated. Project under 5 MW go through the feed-in tariff approach instead. There is no maximum project size.

Is this Specific to Renewable Energy businesses?

No, all low carbon forms of generation are eligible

Is this a local, regional or national support?

National

Other useful/relevant information

This scheme is the replacement of the UK Government's old Renewable Obligation Certificate support scheme for large renewable projects.

Feed-in tariff

Link to support information on website

<https://www.ofgem.gov.uk/environmental-programmes/fit>

Type of Support

Payment for electricity above the market price.

Description of the support

If an application is successful a set amount for each unit (kWh) of electricity generated is paid. The rates vary depending on:

- the size of system
- technology type
- when the system was installed
- for household projects how energy efficient the house is

The feed-in tariff is the main support mechanism for renewable projects under 5 MW in size.

Agency Responsible for Support

Department of Energy and Climate Change <https://www.gov.uk/government/organisations/department-of-energy-climate-change>

Maximum and minimum funding available or maximum value of funding if in kind (or alternative measure)

No minimum project size, maximum of 5 MW. Tariff depends on type of renewable, for example currently Micro CHP receives the highest FiT tariff.

Is this Specific to Renewable Energy businesses?

Yes

Is this a local, regional or national support?

National

Other useful/relevant information

The feed-in tariff system has seen dramatic changes (i.e. massive cuts), as a result the ability of many schemes to be profitable is now dramatically reduced and many companies particularly in the solar sector have gone out of business.

Renewable Heat Incentive (RHI)**Link to support information on website**

For non-domestic users <https://www.ofgem.gov.uk/environmental-programmes/non-domestic-rhi>

Type of Support

Payments based on the amount of renewable heat generated

Description of the support

The RHI is a government environmental programme that provides financial incentives to increase the uptake of renewable heat by businesses, the public sector and non-profit organisations.

Eligible installations receive quarterly payments over 20 years based on the amount of heat generated. It is the major support mechanism in place for renewable heat, being the equivalent of what the feed-in tariff is for electricity.

Businesses, public sector and non-profit organisations can apply if equipment was installed in England, Scotland or Wales on or after 15 July 2009 (or later in some cases). Installations must meet certain requirements.

Agency Responsible for Support

OFGEM

<https://www.ofgem.gov.uk/>

Maximum and minimum funding available or maximum value of funding if in kind (or alternative measure)

Provides additional income for 20 years, this income depends on the amount of heat generated

Is this Specific to Renewable Energy businesses?

Available to any business which uses heating

Is this a local, regional or national support?

National

Circular Economy Investment Fund**Link to support information on website**

<http://www.zerowastescotland.org.uk/circular-economy/investment-fund>

Type of Support

Grant Funding

Description of the support

The Circular Economy Investment Fund is a funding opportunity for businesses and organisations in Scotland working in all business and social economy sectors. £18 million as grant funding to small and medium sized enterprises who are helping to create a more circular economy.

Funding support can be provided for eligible operating and/or capital costs of the project, dependent upon which funding mechanism you select. Funding will only be provided in full where the costs (capital and operating) are utilised 100% for the purpose of the project.

Agency Responsible for Support

Zero Waste Scotland

Maximum and minimum funding available or maximum value of funding if in kind (or alternative measure)

Non applicable

Is this Specific to Renewable Energy businesses?

No

Is this a local, regional or national support?

Regional (Scotland)

Innovate Your Business Support by HIE**Link to support information on website**

<http://www.hie.co.uk/business-support/innovation-r-d/iyb.htm>

Type of Support

Funding

Description of the support

Funding of up to £15,000 could be offered to SMEs through our Small Innovation Grant Schemes. This is made available throughout the year to applicants working in the Highlands and Islands, and available to businesses with no more than 250 employees.

Agency Responsible for Support

Highlands & Islands Enterprises (HIE)

Maximum and minimum funding available or maximum value of funding if in kind (or alternative measure)

Maximum £15,000

Is this Specific to Renewable Energy businesses?

No – all SMEs

Is this a local, regional or national support?

Local (Highlands and Islands)

Start Global Programme**Link to support information on website**

<https://www.scottish-enterprise.com/knowledge-hub/articles/insight/how-to-start-global>

Type of Support

Soft – workshops, training etc.

Description of the support

The Start Global Programme is for new or early stage innovation driven companies with ambitions to go global. It's an intensive 4 month programme, designed to challenge and help validate the business idea. The programme includes:

- Workshops
- Entrepreneurial training
- One-to-one support
- A market visit to explore global opportunities

Agency Responsible for Support

Scottish Enterprise Programme

Maximum and minimum funding available or maximum value of funding if in kind (or alternative measure)

Not applicable

Is this Specific to Renewable Energy businesses?

No

Is this a local, regional or national support?

Regional (Scotland)

Scotedge

Link to support information on website

<https://scottishedge.com/>

Type of Support

Entrepreneurial

Description of the support

Scottish EDGE is a competition aimed at identifying and supporting Scotland's up-and-coming, innovative, high-growth potential entrepreneurial talent.

Winners of the Scottish EDGE will benefit from: Funding of up to £100,000, taking the form of a 50% grant, 50% loan Mentoring and support from a mature entrepreneur Enrolment into the EDGE Alumni programme Package of Support from leading business organisations.

Agency Responsible for Support

Highlands & Islands Enterprises (HIE)

Maximum and minimum funding available or maximum value of funding if in kind (or alternative measure)

Maximum £100,000

Is this Specific to Renewable Energy businesses?

No

Is this a local, regional or national support?

Regional (Scotland)



Northern Periphery and
Arctic Programme
2014-2020



EUROPEAN UNION
Investing in your future
European Regional Development Fund



GREBE

Generating Renewable Energy
Business Enterprise

@ GREBE_NPA

f GREBEProject

Visit
www.grebeproject.eu

Contact

Western Development Commission,
Dillon House, Ballaghaderreen,
Co. Roscommon, F45 WY26, Ireland.

Tel: +353 (0)94 986 1441
Email: paulineleonard@wdc.ie

Project Partners

GREBE will be operated by eight partner organisations across six regions:



About GREBE

GREBE is a €1.77m, 3-year (2015-2018) transnational project to support the renewable energy sector. It is co-funded by the EU's Northern Periphery & Arctic (NPA) Programme. It will focus on the challenges of peripheral and arctic regions as places for doing business, and help develop renewable energy business opportunities provided by extreme conditions.

